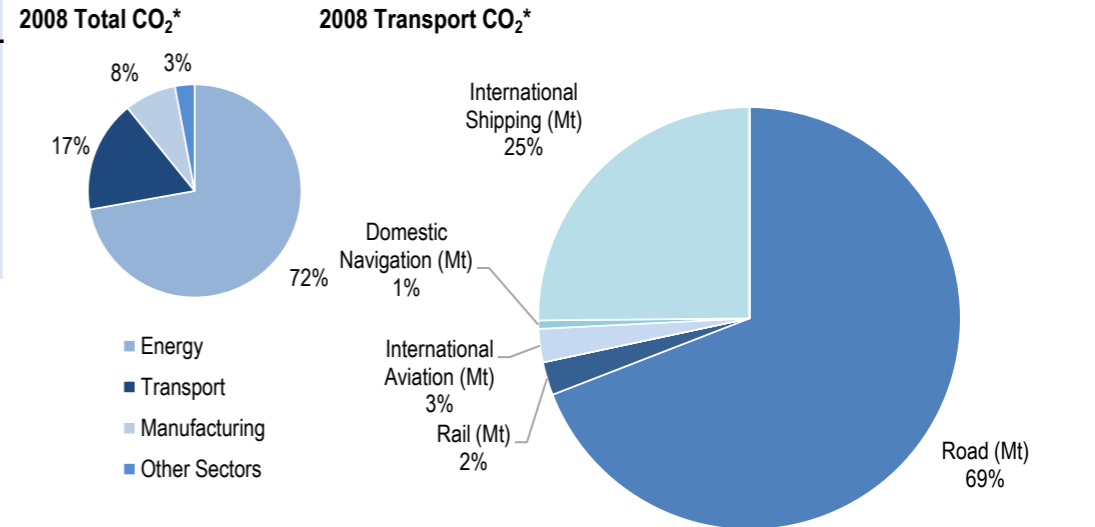
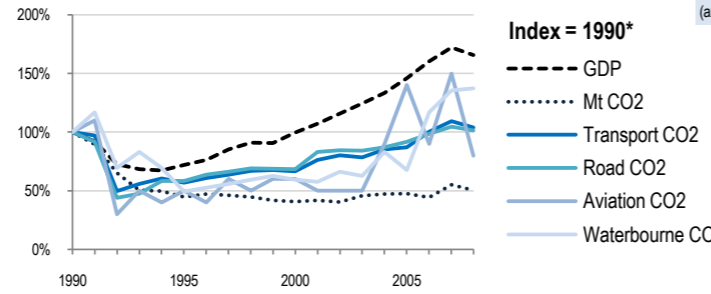
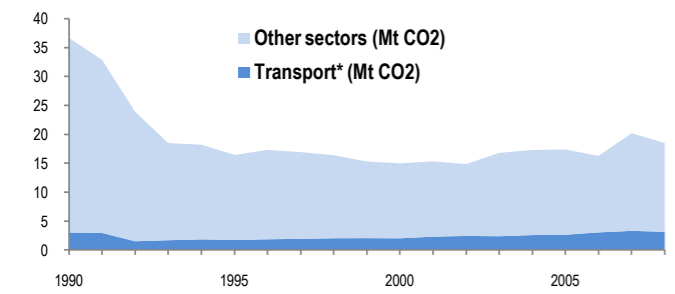


Estonia

EU-27 | N. America | Asia-Pacific | Other ITF or OECD | Top 10 non-ITF

Change 1990-2008*	Mt (axis set -50%,100%)	2008	T/capita	2008, Kg/\$2000 PPP	2008	2007-2008	(%Mt)
Total CO ₂	18.5 Mt	18.49	-40%	13.80	-70%	0.82	-8.4%
Transport CO ₂		3.14	23%	2.34	-37%	0.14	-4.8%
Road CO ₂		2.17	20%	1.62	-39%	0.10	-3.1%
Aviation CO ₂		0.08	-5%	0.06	-52%	0.00	-46.7%
Waterbourne CO ₂		0.81	63%	0.60	-17%	0.04	1.3%



Transport and the Economy	1990	1995	2000	2001	2002	2003	2004	2005	2006	2007	2008	1990-2008	%/year**	% 2007-2008
Population (millions)	1.59	1.45	1.37	1.37	1.36	1.36	1.35	1.35	1.35	1.34	1.34	-16%	-0.95%	0.00%
GDP PPP (billion 2000 US dollars)	13.59	9.79	13.53	14.55	15.71	16.89	18.11	19.82	21.80	23.37	22.53	66%	2.85%	-3.59%
Road passenger km (million pkm)	4454	2048	2630	2720	2603	2573	2714	2938	3112	2909	2676	-40%	-2.79%	-8.01%
Road and Rail freight tkm (million tkm)	11487	5395	12034	13234	14084	16098	17325	18280	19275	19090	14222	24%	1.19%	-25.50%
Road pkm/capita	2801	1412	1920	1985	1914	1892	2010	2176	2305	2171	1997	-29%	-1.86%	-8.01%
Road and Rail freight tkm/\$ gdp	0.85	0.55	0.89	0.91	0.90	0.95	0.96	0.92	0.88	0.82	0.63	-25%	-1.61%	-22.72%
Passenger cars per 1000 inhabitants	154	267	339	299	295	321	349	367	..	390	5.62%	..

CO2 Emissions	1990	1995	2000	2001	2002	2003	2004	2005	2006	2007	2008	1990-2008	%/year**	% 2007-2008
IEA CO ₂ from fuel combustion (Mt)*	36.67	16.43	14.98	15.31	14.85	16.79	17.29	17.37	16.27	20.18	18.49	-50%	-3.73%	-8.37%
... of which transport CO ₂ (Mt)*	3.02	1.72	2.01	2.3	2.42	2.37	2.57	2.63	3.03	3.3	3.14	4%	0.22%	-4.85%
Transport* as a percentage of total	8.2%	10.5%	13.4%	15.0%	16.3%	14.1%	14.9%	15.1%	18.6%	16.4%	17.0%			
Road (Mt)	2.14	1.25	1.46	1.78	1.81	1.8	1.86	1.96	2.11	2.24	2.17	1%	0.08%	-3.13%
Rail (Mt)	0.16	0.11	0.13	0.12	0.15	0.14	0.12	0.12	0.14	0.12	0.08	-50%	-3.78%	-33.33%
Domestic Aviation (Mt)	0.01	0	0	0	0	0	0	0	0	0	0	-100%
International Aviation (Mt)	0.09	0.05	0.06	0.05	0.05	0.05	0.09	0.14	0.09	0.15	0.08	-11%	-0.65%	-46.67%
Domestic Navigation (Mt)	0.02	0.01	0.02	0.02	0.02	0.02	0.02	0.02	0.02	0.02	0.02	0%	0.00%	0.00%
International Shipping (Mt)	0.57	0.28	0.33	0.32	0.37	0.35	0.47	0.38	0.67	0.78	0.79	39%	1.83%	1.28%
Other Transport (Mt)	0.02	0.01	0	0	0	0	0	0	0	0	0	-100%

GHG Emissions	1990	1995	2000	2001	2002	2003	2004	2005	2006	2007	2008	1990-2008	%/year**	% 2007-2008
UNFCCC GHG emissions (Mt CO ₂ eq.)*	41.53	21.21	18.59	18.87	18.28	20.23	20.70	19.94	19.68	22.99	21.13	-49%	-3.68%	-8.07%
UNFCCC GHG fuel combustion (Mt CO ₂ eq.)*	35.97	18.03	15.31	15.66	15.37	17.22	17.34	16.65	16.31	19.38	17.47	-51%	-3.93%	-9.86%
... of which transport GHG (Mt CO ₂ eq.)*	3.19	1.92	2.08	2.37	2.54	2.44	2.63	2.68	3.12	3.41	3.20	0%	0.02%	-6.19%
Road (Mt)	2.32	1.46	1.52	1.85	1.91	1.85	1.92	2.01	2.18	2.31	2.17	-6%	-0.36%	-5.82%
International Aviation (Mt)	0.11	0.05	0.07	0.05	0.06	0.06	0.09	0.15	0.10	0.16	0.09	-21%	-1.28%	-44.37%
International Shipping (Mt)	0.58	0.28	0.33	0.32	0.37	0.36	0.47	0.38	0.67	0.78	0.80	38%	1.80%	2.00%

* includes emissions from international aviation and international maritime bunkers - there is no internationally agreed allocation mechanism for these and totals here are indicative of the scale of these emissions, not of their national "ownership" ** available yrs.