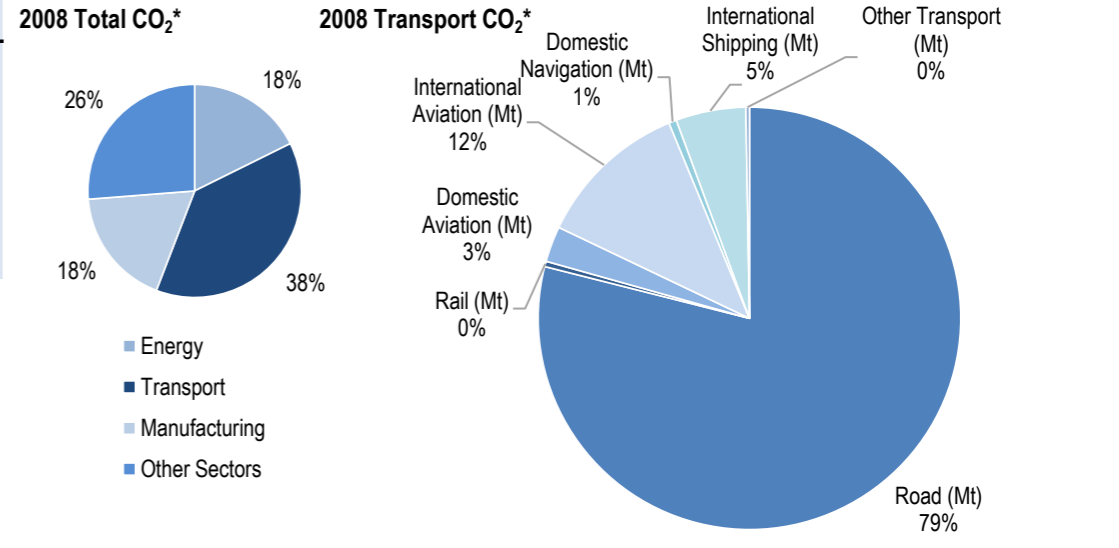
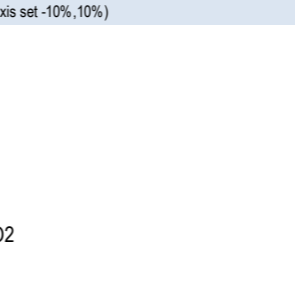
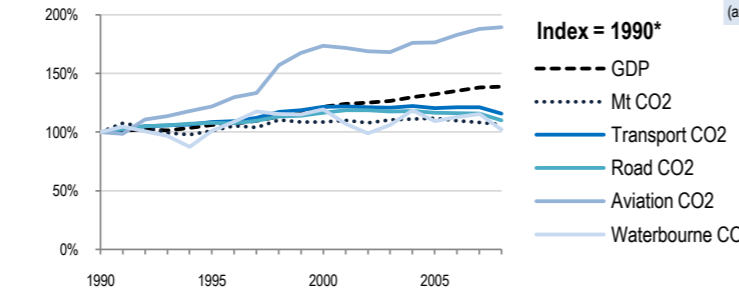
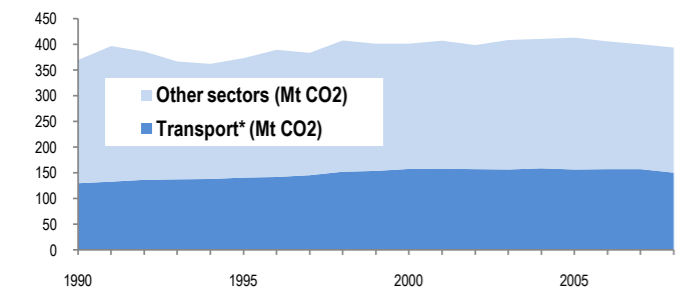


# France



Change 1990-2008*	Mt (axis set -50%,100%)	2008	T/capita	2008, Kg/\$2000 PPP	2008	2007-2008	(%Mt)
Total CO <sub>2</sub>	7%	393.85	-3%	6.14	-23%	0.22	-1.6%
Transport CO <sub>2</sub>	16%	150.32	5%	2.34	-17%	0.09	-4.4%
Road CO <sub>2</sub>	10%	118.67	0%	1.85	-21%	0.07	-4.7%
Aviation CO <sub>2</sub>	89%	21.68	72%	0.34	36%	0.01	0.7%
Waterbourne CO <sub>2</sub>	2%	8.93	-7%	0.14	-26%	0.01	-11.5%



Transport and the Economy	1990	1995	2000	2001	2002	2003	2004	2005	2006	2007	2008	1990-2008	%/year**	% 2007-2008
Population (millions)	58.17	59.42	60.73	61.16	61.61	62.04	62.49	62.96	63.38	63.76	64.12	10%	0.54%	0.56%
GDP PPP (billion 2000 US dollars)	1261.93	1336.43	1534.86	1563.32	1579.37	1596.54	1635.98	1667.00	1703.95	1743.55	1751.04	39%	1.84%	0.43%
Road passenger km (million pkm)	627300	681700	742600	768900	775700	781300	780900	771300	768700	774800	768700	23%	1.14%	-0.79%
Road and Rail freight tkm (million tkm)	164470	203644	239572	239367	238573	235984	242447	232812	240008	249637	236031	44%	2.03%	-5.45%
Road pkm/capita	10784	11473	12228	12572	12590	12593	12496	12251	12128	12152	11988	11%	0.59%	-1.34%
Road and Rail freight tkm/\$ gdp	0.13	0.15	0.16	0.15	0.15	0.15	0.15	0.14	0.14	0.14	0.13	3%	0.19%	-5.85%
Passenger cars per 1000 inhabitants	405	434	476	485	489	492	494	494	496	498	..	..	1.22%	..
<b>CO2 Emissions</b>														
IEA CO <sub>2</sub> from fuel combustion (Mt)*	369.6	373.23	401.36	407.18	398.62	408.55	410.75	413.08	405.89	400.16	393.85	7%	0.35%	-1.58%
... of which transport CO <sub>2</sub> (Mt)*	129.79	140.73	157.61	158.11	157.19	156.53	158.78	156.47	157.17	157.19	150.32	16%	0.82%	-4.37%
Transport* as a percentage of total	35.1%	37.7%	39.3%	38.8%	39.4%	38.3%	38.7%	37.9%	38.7%	39.3%	38.2%			
Road (Mt)	107.73	116.08	125.55	127.71	127.85	126.7	126.98	125.58	125.24	124.51	118.67	10%	0.54%	-4.69%
Rail (Mt)	1.2	1.19	1.14	0.75	0.77	0.73	0.73	0.66	0.64	0.6	0.62	-48%	-3.60%	3.33%
Domestic Aviation (Mt)	2.14	2.53	4.81	4.77	4.39	4.41	4.26	4.1	4.11	4.06	4.1	92%	3.68%	0.99%
International Aviation (Mt)	9.32	11.44	15.07	14.91	14.97	14.88	15.91	16.1	16.86	17.47	17.58	89%	3.59%	0.63%
Domestic Navigation (Mt)	0.78	0.89	1	0.91	0.9	0.9	0.9	0.89	0.88	0.89	0.89	14%	0.74%	0.00%
International Shipping (Mt)	7.96	7.94	9.42	8.46	7.73	8.37	9.48	8.65	8.97	9.20	8.04	1%	0.06%	-12.61%
Other Transport (Mt)	0.67	0.66	0.62	0.59	0.59	0.54	0.53	0.49	0.47	0.47	0.42	-37%	-2.56%	-10.64%
<b>GHG Emissions</b>														
UNFCCC GHG emissions (Mt CO <sub>2</sub> eq.)*	583.29	578.53	585.00	585.99	576.52	581.80	582.78	586.13	571.27	562.21	557.94	-4%	-0.25%	-0.76%
UNFCCC GHG fuel combustion (Mt CO <sub>2</sub> eq.)*	390.55	392.35	413.21	418.06	409.69	418.12	422.21	426.71	414.56	405.74	400.48	3%	0.14%	-1.30%
... of which transport GHG (Mt CO <sub>2</sub> eq.)*	136.96	147.81	162.26	164.01	164.90	165.27	168.05	165.92	166.11	165.84	158.35	16%	0.81%	-4.51%
Road (Mt)	112.24	121.37	128.77	132.01	132.83	132.65	132.92	131.39	130.79	129.53	123.28	10%	0.52%	-4.82%
International Aviation (Mt)	8.96	10.82	14.45	14.61	14.65	14.77	15.80	16.02	16.93	17.69	17.75	98%	3.87%	0.32%
International Shipping (Mt)	8.21	7.27	9.69	8.25	8.01	8.68	9.85	9.01	9.36	9.60	8.39	2%	0.12%	-12.63%

\* includes emissions from international aviation and international maritime bunkers - there is no internationally agreed allocation mechanism for these and totals here are indicative of the scale of these emissions, not of their national "ownership" \*\* available yrs.