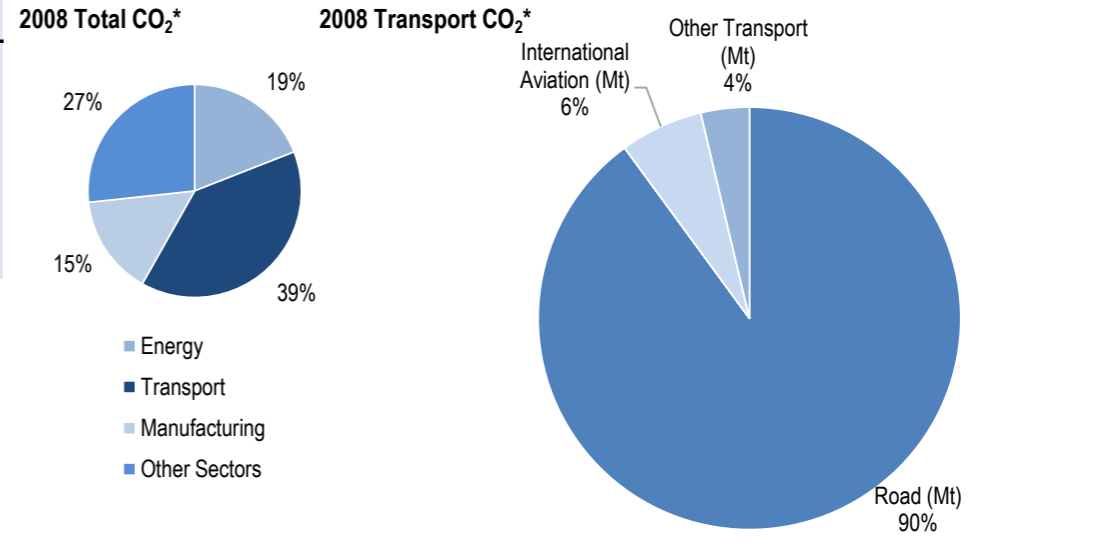
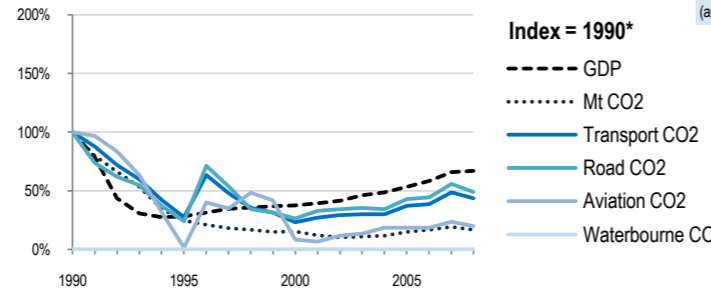
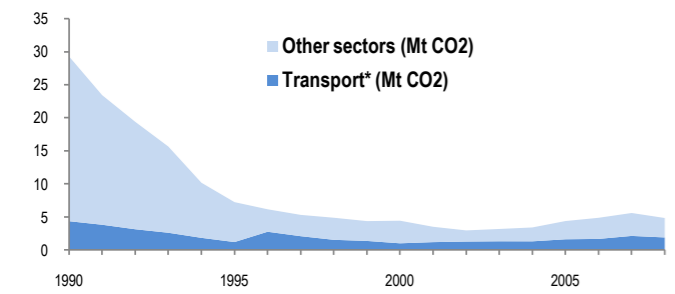


Georgia

EU-27 N. America Asia-Pacific Other ITF or OECD Top 10 non-ITF

Change 1990-2008*	Mt (axis set -50%,100%)	2008, T/capita	2008, Kg/\$2000 PPP	2008, 2007-2008 (%Mt)	2008 Total CO ₂ *	2008 Transport CO ₂ *
Total CO ₂	-84%	4.83	1.11	-75%	4.8 Mt	0.29
Transport CO ₂	-57%	1.89	0.43	-35%		0.11
Road CO ₂	-51%	1.7	0.39	-27%		0.10
Aviation CO ₂	-80%	0.12	0.03	-70%		0.01
Waterborne CO ₂		0	0.00			0.00



Transport and the Economy	1990	1995	2000	2001	2002	2003	2004	2005	2006	2007	2008	1990-2008	%/year**	% 2007-2008
Population (millions)	5.46	5.03	4.72	4.67	4.61	4.56	4.52	4.47	4.43	4.40	4.36	-20%	-1.24%	-0.91%
GDP PPP (billion 2000 US dollars)	25.15	7.11	9.43	9.89	10.43	11.58	12.26	13.44	14.70	16.52	16.85	-33%	-2.20%	2.00%
Road passenger km (million pkm)
Road and Rail freight tkm (million tkm)	13411	1376	4388	5000	5617	6009	5425	6723	7979	7521	7115	-47%	-3.46%	-5.40%
Road pkm/capita
Road and Rail freight tkm/\$ gdp	0.53	0.19	0.47	0.51	0.54	0.52	0.44	0.50	0.54	0.46	0.42	-21%	-1.29%	-7.25%
Passenger cars per 1000 inhabitants	89	67	52	53	55	56	95	0.38%	..
CO2 Emissions														
IEA CO ₂ from fuel combustion (Mt)*	29.29	7.23	4.42	3.5	2.95	3.17	3.4	4.37	4.86	5.59	4.83	-84%	-9.53%	-13.60%
... of which transport CO ₂ (Mt)*	4.35	1.19	1	1.18	1.27	1.31	1.3	1.61	1.67	2.12	1.89	-57%	-4.53%	-10.85%
Transport* as a percentage of total	14.9%	16.5%	22.6%	33.7%	43.1%	41.3%	38.2%	36.8%	34.4%	37.9%	39.1%
Road (Mt)	3.46	0.82	0.91	1.13	1.19	1.22	1.18	1.48	1.53	1.93	1.7	-51%	-3.87%	-11.92%
Rail (Mt)	0.11	0.2	0.03	0	0	0	0	0	0	0	0	-100%
Domestic Aviation (Mt)	0	0	0	0	0	0	0	0	0	0	0
International Aviation (Mt)	0.60	0.01	0.05	0.04	0.07	0.08	0.11	0.11	0.11	0.14	0.12	-80%	-8.55%	-14.29%
Domestic Navigation (Mt)	0	0	0	0	0	0	0	0	0	0	0
International Shipping (Mt)	0	0.16	0	0	0	0	0	0	0	0	0
Other Transport (Mt)	0.18	0	0.01	0.01	0.01	0.01	0.01	0.02	0.02	0.06	0.07	-61%	-5.11%	16.67%
GHG Emissions														
UNFCCC GHG emissions (Mt CO ₂ eq.)*
UNFCCC GHG fuel combustion (Mt CO ₂ eq.)*
... of which transport GHG (Mt CO ₂ eq.)*
Road (Mt)
International Aviation (Mt)
International Shipping (Mt)

* includes emissions from international aviation and international maritime bunkers - there is no internationally agreed allocation mechanism for these and totals here are indicative of the scale of these emissions, not of their national "ownership" ** available yrs.