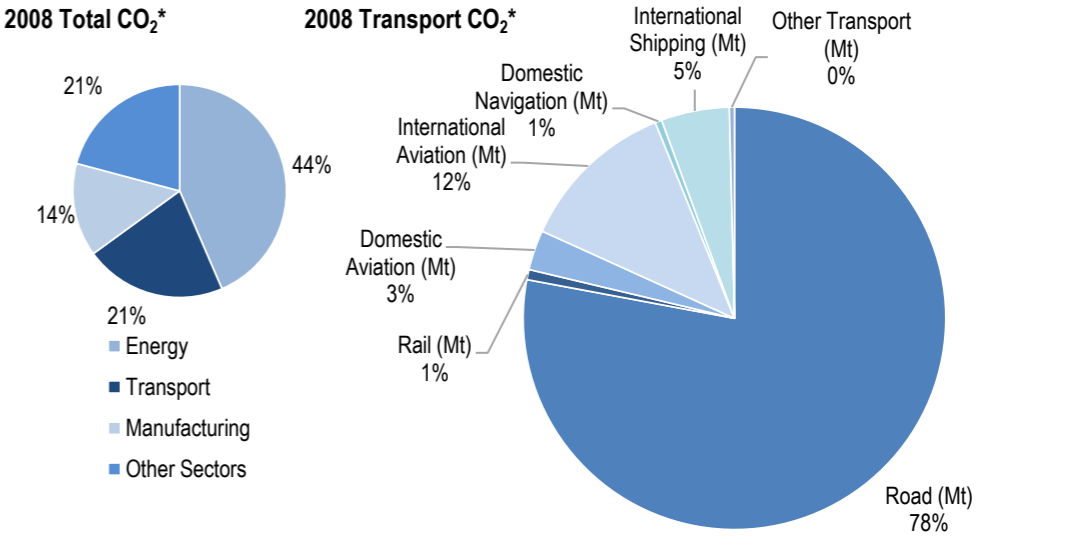
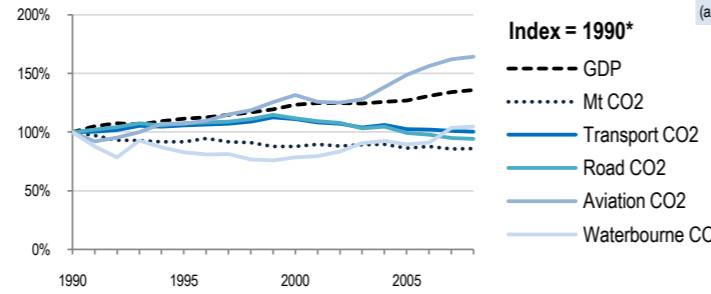
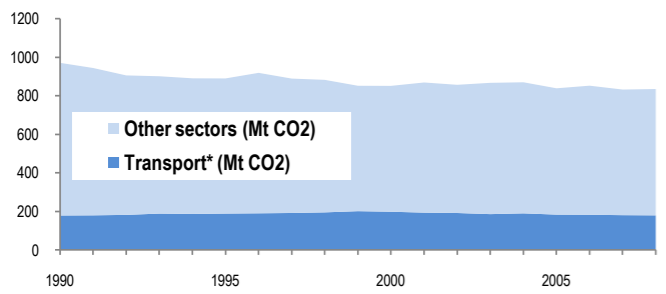


Germany



Change 1990-2008*	Mt (axis set -50%,100%)	2008	T/capita	2008, Kg/\$2000 PPP	2008	2007-2008	(%Mt)
Total CO ₂	-14%	834.95	-17%	10.17	-37%	0.36	0.3%
Transport CO ₂	0%	179.45	-3%	2.19	-26%	0.08	-0.5%
Road CO ₂	-6%	139.86	-9%	1.70	-31%	0.06	-1.0%
Aviation CO ₂	64%	27.21	59%	0.33	21%	0.01	1.3%
Waterbourne CO ₂	5%	10.28	1%	0.13	-23%	0.00	1.0%



Transport and the Economy	1990	1995	2000	2001	2002	2003	2004	2005	2006	2007	2008	1990-2008	%/year**	% 2007-2008
Population (millions)	79.36	81.66	82.19	82.34	82.48	82.52	82.50	82.46	82.37	82.26	82.12	3%	0.19%	-0.17%
GDP PPP (billion 2000 US dollars)	1732.21	1931.18	2132.96	2159.41	2159.41	2154.72	2180.74	2197.16	2266.70	2322.58	2351.80	36%	1.71%	1.26%
Road passenger km (million pkm)	649800	883800	900300	921300	930500	925200	936506	923963	929484	933387	915821	41%	1.92%	-1.88%
Road and Rail freight tkm (million tkm)	273000	308015	358199	365120	361490	370759	390153	405535	437016	458054	457202	67%	2.91%	-0.19%
Road pkm/capita	8188	10823	10954	11189	11282	11212	11352	11205	11284	11347	11152	36%	1.73%	-1.71%
Road and Rail freight tkm/\$ gdp	0.16	0.16	0.17	0.17	0.17	0.17	0.18	0.18	0.19	0.20	0.19	23%	1.17%	-1.43%
Passenger cars per 1000 inhabitants	386	495	515	539	541	541	546	550	565	566	2.28%	..

CO2 Emissions	1990	1995	2000	2001	2002	2003	2004	2005	2006	2007	2008	1990-2008	%/year**	% 2007-2008
IEA CO ₂ from fuel combustion (Mt)*	970.79	889.89	851.38	868.92	856.85	867.14	870.03	838.79	852.26	832.21	834.95	-14%	-0.83%	0.33%
... of which transport CO ₂ (Mt)*	178.73	188.76	198.23	193.58	191.66	185.83	189.73	183.25	182.57	180.33	179.45	0%	0.02%	-0.49%
Transport* as a percentage of total	18.4%	21.2%	23.3%	22.3%	22.4%	21.4%	21.8%	21.8%	21.4%	21.7%	21.5%			
Road (Mt)	148.66	159.69	166.14	162.44	160.31	153.42	155.51	147.69	145.61	141.34	139.86	-6%	-0.34%	-1.05%
Rail (Mt)	2.92	2.27	1.79	1.8	1.69	1.57	1.5	1.34	1.38	1.26	1.4	-52%	-4.00%	11.11%
Domestic Aviation (Mt)	3.98	3.61	4.42	4.22	4.19	4.29	4.62	4.97	5.22	5.41	5.48	38%	1.79%	1.29%
International Aviation (Mt)	12.58	14.13	17.39	16.59	16.53	16.92	18.29	19.69	20.69	21.45	21.73	73%	3.08%	1.31%
Domestic Navigation (Mt)	2.03	1.71	0.86	0.83	0.72	0.72	0.72	0.98	0.84	0.52	0.92	-55%	-4.30%	76.92%
International Shipping (Mt)	7.79	6.43	6.85	6.96	7.46	8.17	8.36	7.83	8.11	9.66	9.36	20%	1.03%	-3.11%
Other Transport (Mt)	0.77	0.91	0.77	0.73	0.75	0.74	0.73	0.74	0.73	0.7	0.7	-9%	-0.53%	0.00%

GHG Emissions	1990	1995	2000	2001	2002	2003	2004	2005	2006	2007	2008	1990-2008	%/year**	% 2007-2008
UNFCCC GHG emissions (Mt CO ₂ eq.)*	1251.33	1122.61	1051.28	1067.03	1047.30	1041.83	1028.80	1009.02	1016.30	992.79	993.53	-21%	-1.27%	0.07%
UNFCCC GHG fuel combustion (Mt CO ₂ eq.)*	979.92	870.55	834.48	855.86	840.72	839.97	826.29	812.55	819.39	792.18	795.72	-19%	-1.15%	0.45%
... of which transport GHG (Mt CO ₂ eq.)*	184.17	199.23	209.06	204.82	203.72	197.73	198.18	192.61	190.03	189.33	188.95	3%	0.14%	-0.20%
Road (Mt)	152.24	167.18	173.05	169.51	167.68	161.35	161.17	152.95	149.02	146.15	145.97	-4%	-0.23%	-0.12%
International Aviation (Mt)	11.52	14.68	19.52	19.16	19.13	19.55	20.20	23.31	24.47	25.43	25.78	124%	4.57%	1.36%
International Shipping (Mt)	8.06	6.60	7.09	7.17	7.68	8.46	8.67	8.12	8.39	10.02	9.69	20%	1.03%	-3.30%

* includes emissions from international aviation and international maritime bunkers - there is no internationally agreed allocation mechanism for these and totals here are indicative of the scale of these emissions, not of their national "ownership" ** available yrs.