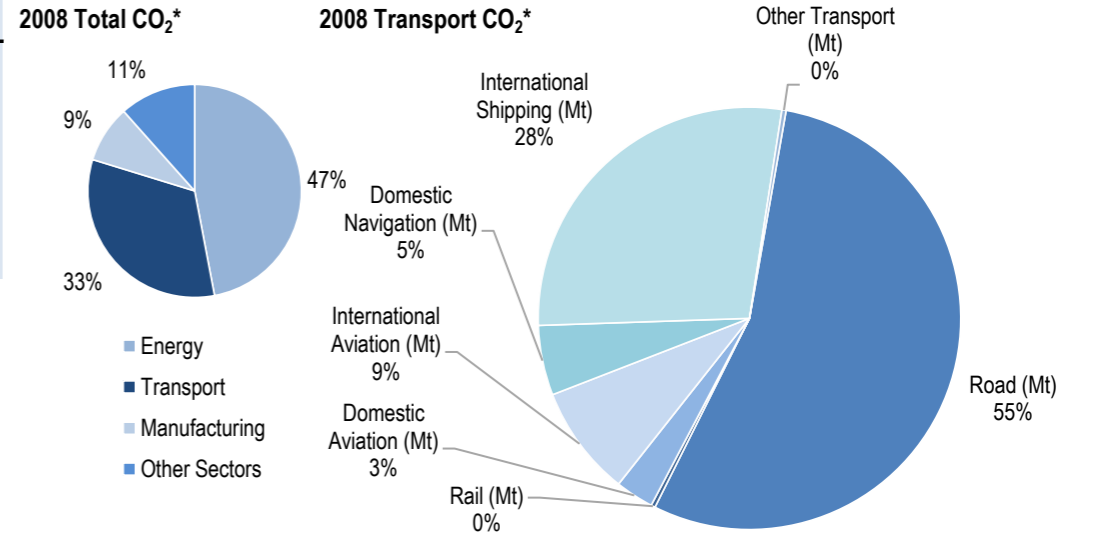
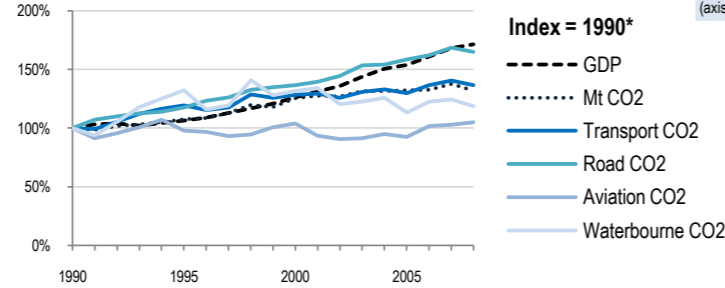
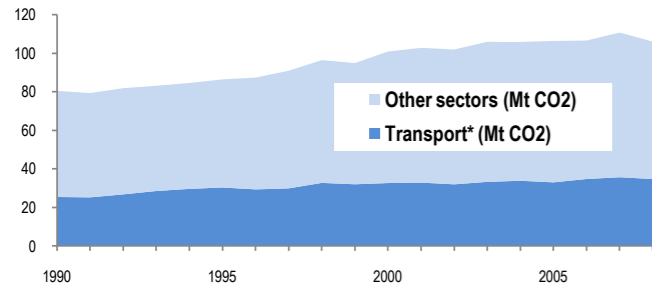


# Greece



Change 1990-2008*	Mt (axis set -50%,100%)	2008	T/capita	2008, Kg/\$2000 PPP	2008	2007-2008	(%Mt)
Total CO <sub>2</sub>	32%	106.05	21%	9.44	-23%	0.39	-4.2%
Transport CO <sub>2</sub>	37%	34.72	26%	3.09	-20%	0.13	-2.6%
Road CO <sub>2</sub>	65%	18.96	52%	1.69	-4%	0.07	-2.2%
Aviation CO <sub>2</sub>	5%	3.96	-3%	0.35	-39%	0.01	2.1%
Waterbourne CO <sub>2</sub>	19%	11.58	9%	1.03	-31%	0.04	-4.5%



Transport and the Economy	1990	1995	2000	2001	2002	2003	2004	2005	2006	2007	2008	1990-2008	%/year**	% 2007-2008
Population (millions)	10.34	10.63	10.92	10.95	10.99	11.02	11.06	11.10	11.15	11.19	11.24	9%	0.46%	0.45%
GDP PPP (billion 2000 US dollars)	159.48	169.67	201.02	209.45	216.66	229.54	240.15	245.53	256.63	268.11	273.51	72%	3.04%	2.01%
Road passenger km (million pkm)	24233	31452	40458	41083	41811	42029	42596	42484	42309	42577	42182	74%	3.13%	-0.93%
Road and Rail freight tkm (million tkm)	13095	12662	14717	14803	15027	15156	16065	16474	17172	18194	17746	36%	1.70%	-2.46%
Road pkm/capita	2344	2959	3705	3752	3804	3814	3851	3827	3795	3805	3753	60%	2.65%	-1.37%
Road and Rail freight tkm/\$ gdp	0.08	0.07	0.07	0.07	0.07	0.07	0.07	0.07	0.07	0.07	0.06	-21%	-1.30%	-4.39%
Passenger cars per 1000 inhabitants	171	211	293	312	331	348	368	388	409	429	..	..	5.56%	..
<b>CO2 Emissions</b>														
IEA CO <sub>2</sub> from fuel combustion (Mt)*	80.44	86.43	100.88	102.78	101.95	105.91	105.84	106.36	106.6	110.71	106.05	32%	1.55%	-4.21%
... of which transport CO <sub>2</sub> (Mt)*	25.4	30.33	32.63	32.87	31.97	33.25	33.82	32.99	34.73	35.65	34.72	37%	1.75%	-2.61%
Transport* as a percentage of total	31.6%	35.1%	32.3%	32.0%	31.4%	31.4%	32.0%	31.0%	32.6%	32.2%	32.7%			
Road (Mt)	11.5	13.52	15.7	16.05	16.62	17.64	17.74	18.22	18.64	19.39	18.96	65%	2.82%	-2.22%
Rail (Mt)	0.2	0.14	0.12	0.12	0.12	0.12	0.12	0.12	0.13	0.12	0.11	-45%	-3.27%	-8.33%
Domestic Aviation (Mt)	1.43	1.17	1.51	1.29	1.18	1.12	1.19	1.19	1.07	1.06	1.02	-29%	-1.86%	-3.77%
International Aviation (Mt)	2.34	2.52	2.41	2.24	2.24	2.32	2.39	2.3	2.76	2.82	2.94	26%	1.28%	4.26%
Domestic Navigation (Mt)	1.78	1.71	1.54	2.1	1.9	1.88	2.11	2.02	2.22	2.07	1.86	4%	0.24%	-10.14%
International Shipping (Mt)	7.97	11.17	11.28	10.96	9.83	10.07	10.16	9.02	9.74	10.05	9.72	22%	1.11%	-3.28%
Other Transport (Mt)	0.18	0.1	0.07	0.1	0.08	0.09	0.1	0.11	0.17	0.15	0.11	-39%	-2.70%	-26.67%
<b>GHG Emissions</b>														
UNFCCC GHG emissions (Mt CO <sub>2</sub> eq.)*	113.87	121.87	138.85	139.67	138.20	142.84	143.31	144.41	141.48	144.94	139.40	22%	1.13%	-3.82%
UNFCCC GHG fuel combustion (Mt CO <sub>2</sub> eq.)*	86.88	93.54	109.62	111.50	110.02	114.97	115.33	116.65	116.18	119.49	114.99	32%	1.57%	-3.77%
... of which transport GHG (Mt CO <sub>2</sub> eq.)*	25.35	30.86	33.56	33.89	32.92	34.99	35.51	33.68	35.74	36.80	35.20	39%	1.84%	-4.36%
Road (Mt)	11.97	14.11	16.47	16.84	17.41	18.42	18.48	18.66	19.22	20.11	19.37	62%	2.71%	-3.70%
International Aviation (Mt)	2.47	2.64	2.53	2.35	2.35	3.06	3.14	2.41	2.89	2.95	2.65	7%	0.37%	-10.41%
International Shipping (Mt)	8.11	11.37	11.47	11.14	9.99	10.23	10.32	9.17	9.90	10.11	9.87	22%	1.10%	-2.43%

\* includes emissions from international aviation and international maritime bunkers - there is no internationally agreed allocation mechanism for these and totals here are indicative of the scale of these emissions, not of their national "ownership" \*\* available yrs.