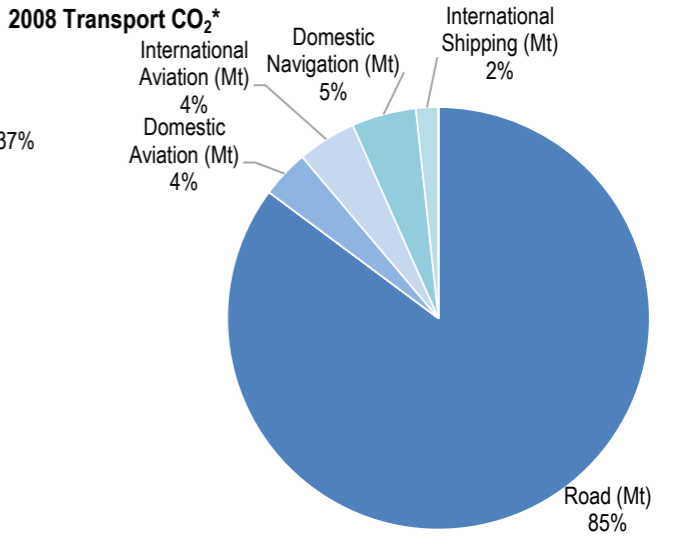
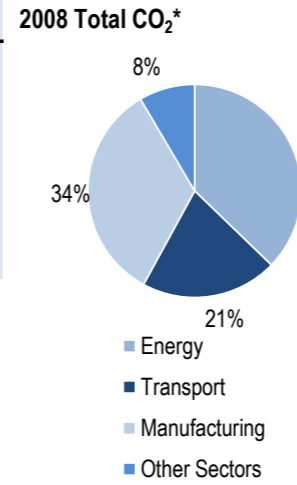
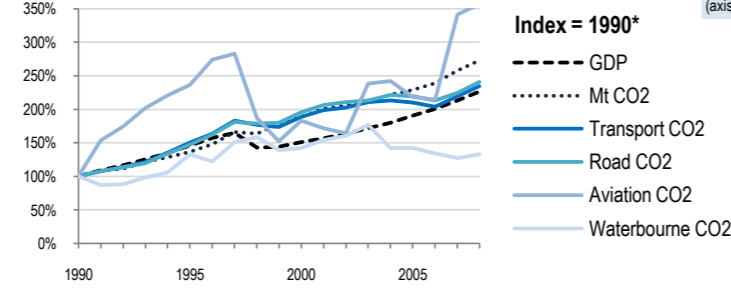
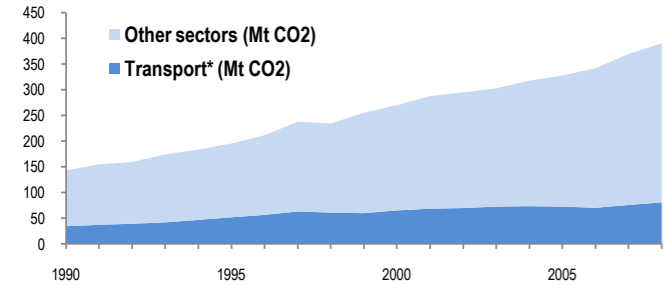


Indonesia



Change 1990-2008*	Mt (axis set -50%,100%)	2008	T/capita	2008, Kg/\$2000 PPP	2008	2007-2008	(%Mt)
Total CO ₂	173%	390.42	113%	1.71	20%	0.43	5.6%
Transport CO ₂	135%	80.95	83%	0.35	4%	0.09	6.8%
Road CO ₂	141%	68.96	88%	0.30	6%	0.08	7.2%
Aviation CO ₂	257%	6.61	179%	0.03	58%	0.01	4.6%
Waterbourne CO ₂	33%	5.38	3%	0.02	-41%	0.01	4.3%



Transport and the Economy	1990	1995	2000	2001	2002	2003	2004	2005	2006	2007	2008	1990-2008	%/year**	% 2007-2008
Population (millions)	178.23	192.75	206.27	209.01	211.82	214.67	217.59	220.56	223.04	225.63	228.25	28%	1.38%	1.16%
GDP PPP (billion 2000 US dollars)	396.38	578.79	599.27	621.10	649.05	680.07	714.29	754.95	796.48	846.48	897.80	126%	4.65%	6.06%
Road passenger km (million pkm)
Road and Rail freight tkm (million tkm)
Road pkm/capita
Road and Rail freight tkm/\$ gdp
Passenger cars per 1000 inhabitants	7	11	42	11.12%	..
CO2 Emissions														
IEA CO ₂ from fuel combustion (Mt)*	143.18	195.41	270.12	287.67	294.78	302.83	317.67	327.63	342	369.61	390.42	173%	5.73%	5.63%
... of which transport CO ₂ (Mt)*	34.51	51.81	65.18	68.51	69.82	72.64	73.52	72.61	70.36	75.79	80.95	135%	4.85%	6.81%
Transport* as a percentage of total	24.1%	26.5%	24.1%	23.8%	23.7%	24.0%	23.1%	22.2%	20.6%	20.5%	20.7%
Road (Mt)	28.6	42.03	56.01	59.08	60.26	61.05	63.27	62.8	60.94	64.31	68.96	141%	5.01%	7.23%
Rail (Mt)	0	0	0	0	0	0	0	0	0	0	0
Domestic Aviation (Mt)	0.89	2.6	1.87	1.63	1.39	1.93	2.05	1.81	1.78	2.83	2.96	233%	6.90%	4.59%
International Aviation (Mt)	0.96	1.78	1.52	1.55	1.65	2.48	2.43	2.23	2.19	3.49	3.65	280%	7.70%	4.58%
Domestic Navigation (Mt)	2.38	4.12	5.41	5.98	5.93	5.65	4.66	4.6	4.22	3.85	3.99	68%	2.91%	3.64%
International Shipping (Mt)	1.68	1.28	0.36	0.27	0.59	1.53	1.12	1.17	1.23	1.31	1.39	-17%	-1.05%	6.11%
Other Transport (Mt)	0	0	0	0	0	0	0	0	0	0	0
GHG Emissions														
UNFCCC GHG emissions (Mt CO ₂ eq.)*
UNFCCC GHG fuel combustion (Mt CO ₂ eq.)*
... of which transport GHG (Mt CO ₂ eq.)*
Road (Mt)
International Aviation (Mt)
International Shipping (Mt)

* includes emissions from international aviation and international maritime bunkers - there is no internationally agreed allocation mechanism for these and totals here are indicative of the scale of these emissions, not of their national "ownership" ** available yrs.