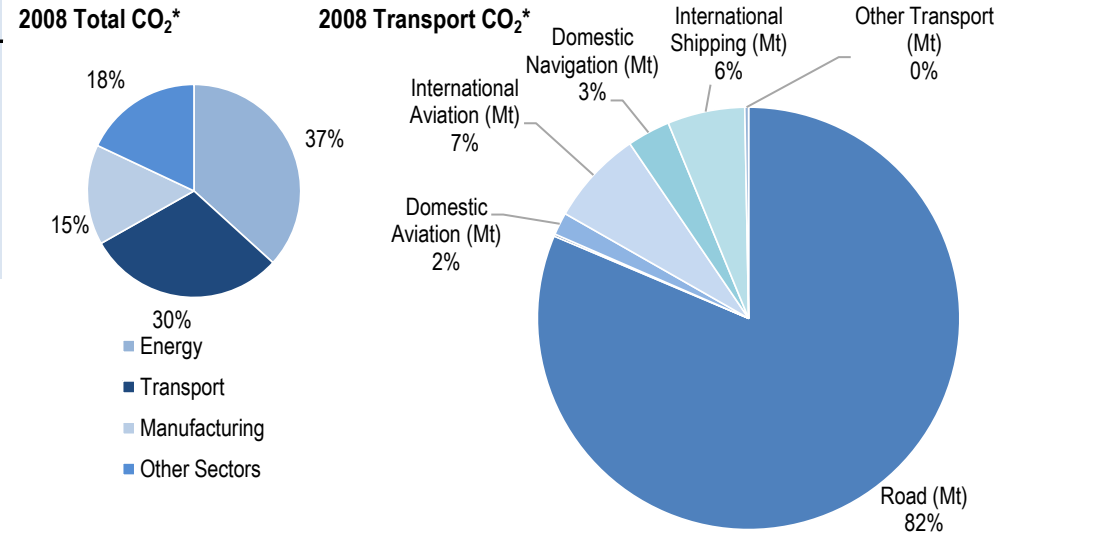
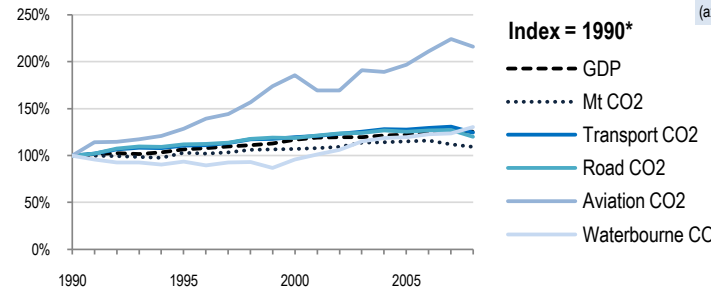
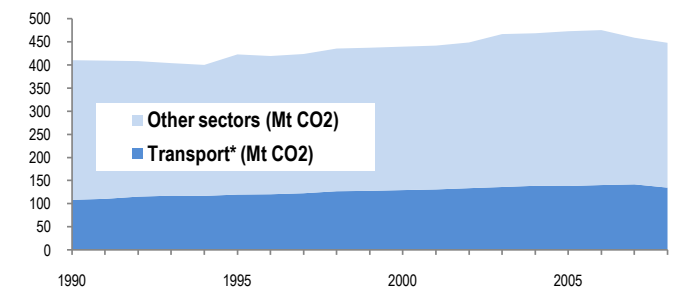


Italy



Change 1990-2008*	Mt (axis set -50%,100%)	2008	T/capita	2008, Kg/\$2000 PPP	2008	2007-2008	(%Mt)
Total CO ₂	9%	447.84	3%	7.48	-13%	0.29	-2.4%
Transport CO ₂	24%	134.75	18%	2.25	-1%	0.09	-4.9%
Road CO ₂	20%	109.65	14%	1.83	-4%	0.07	-5.8%
Aviation CO ₂	116%	12.08	105%	0.20	72%	0.01	-3.6%
Waterborne CO ₂	30%	12.42	23%	0.21	4%	0.01	5.4%



Transport and the Economy	1990	1995	2000	2001	2002	2003	2004	2005	2006	2007	2008	1990-2008	%/year**	% 2007-2008
Population (millions)	56.72	56.84	56.94	56.98	57.16	57.61	58.18	58.61	58.94	59.38	59.89	6%	0.30%	0.86%
GDP PPP (billion 2000 US dollars)	1245.38	1326.59	1457.57	1484.08	1490.81	1490.56	1513.40	1523.32	1554.34	1578.64	1562.23	25%	1.27%	-1.04%
Road passenger km (million pkm)	606549	701860	820079	813276	808678	809307	815820	790209	847909	871303	844892	39%	1.86%	-3.03%
Road and Rail freight tkm (million tkm)	199115	219377	184401	179139	183096	165637	180367	194315	179577	177683	213610	7%	0.39%	20.22%
Road pkm/capita	10694	12348	14403	14273	14148	14048	14022	13482	14386	14673	14107	32%	1.55%	-3.86%
Road and Rail freight tkm/\$ gdp	0.16	0.17	0.13	0.12	0.12	0.11	0.12	0.13	0.12	0.11	0.14	-14%	-0.87%	21.48%
Passenger cars per 1000 inhabitants	476	524	545	576	584	..	590	595	..	601	1.38%	..

CO2 Emissions	1990	1995	2000	2001	2002	2003	2004	2005	2006	2007	2008	1990-2008	%/year**	% 2007-2008
IEA CO ₂ from fuel combustion (Mt)*	410.23	422.8	439.58	441.8	448.64	466.75	468.52	472.9	475.3	458.8	447.84	9%	0.49%	-2.39%
... of which transport CO ₂ (Mt)*	108.35	119.7	129.36	130.8	133.5	136.05	138.69	138.18	140.28	141.75	134.75	24%	1.22%	-4.94%
Transport* as a percentage of total	26.4%	28.3%	29.4%	29.6%	29.8%	29.1%	29.6%	29.2%	29.5%	30.9%	30.1%			
Road (Mt)	91.46	102.18	108.72	110.89	113.14	113.61	115.85	114.82	115.88	116.45	109.65	20%	1.01%	-5.84%
Rail (Mt)	0.61	0.6	0.43	0.37	0.38	0.41	0.36	0.3	0.35	0.33	0.22	-64%	-5.51%	-33.33%
Domestic Aviation (Mt)	1.09	1.38	1.98	1.83	1.83	2.06	2.04	2.13	2.28	2.42	2.32	113%	4.29%	-4.13%
International Aviation (Mt)	4.50	5.8	8.38	7.64	7.64	8.6	8.53	8.88	9.52	10.11	9.76	117%	4.40%	-3.46%
Domestic Navigation (Mt)	1.16	1.34	3.96	4.11	4.1	4.4	4.41	4.34	4.34	4.18	4.44	283%	7.74%	6.22%
International Shipping (Mt)	8.37	7.59	5.16	5.52	6.00	6.56	6.89	7.06	7.35	7.60	7.98	-5%	-0.26%	5.00%
Other Transport (Mt)	1.16	0.82	0.73	0.44	0.42	0.4	0.61	0.65	0.55	0.67	0.39	-66%	-5.88%	-41.79%

GHG Emissions	1990	1995	2000	2001	2002	2003	2004	2005	2006	2007	2008	1990-2008	%/year**	% 2007-2008
UNFCCC GHG emissions (Mt CO ₂ eq.)*	525.68	539.24	562.13	568.25	569.06	585.69	589.68	588.81	579.47	570.97	559.97	7%	0.35%	-1.93%
UNFCCC GHG fuel combustion (Mt CO ₂ eq.)*	416.45	431.17	454.11	460.02	462.39	478.30	482.08	482.25	479.29	470.21	464.02	11%	0.60%	-1.32%
... of which transport GHG (Mt CO ₂ eq.)*	111.53	123.50	134.72	137.37	139.30	142.09	144.63	143.52	146.15	147.09	142.36	28%	1.37%	-3.22%
Road (Mt)	94.87	105.66	112.52	115.15	117.23	118.22	120.23	118.41	119.70	120.12	115.22	21%	1.09%	-4.08%
International Aviation (Mt)	4.20	5.72	8.09	8.09	7.38	8.60	8.69	9.18	9.91	10.51	10.16	142%	5.03%	-3.29%
International Shipping (Mt)	4.43	4.07	4.22	4.86	5.60	6.34	6.87	6.99	7.52	7.83	8.32	88%	3.56%	6.25%

* includes emissions from international aviation and international maritime bunkers - there is no internationally agreed allocation mechanism for these and totals here are indicative of the scale of these emissions, not of their national "ownership" ** available yrs.