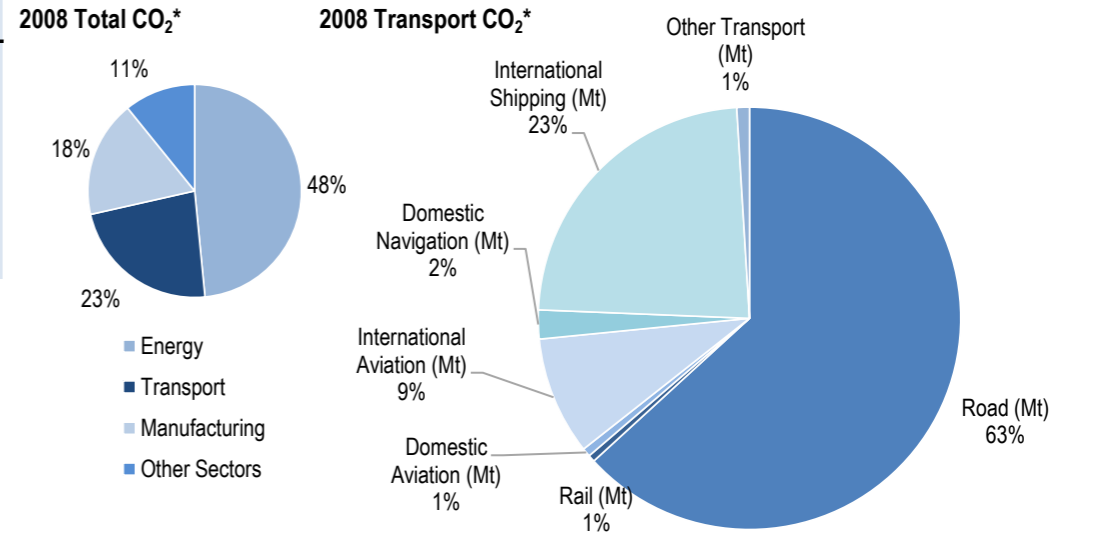
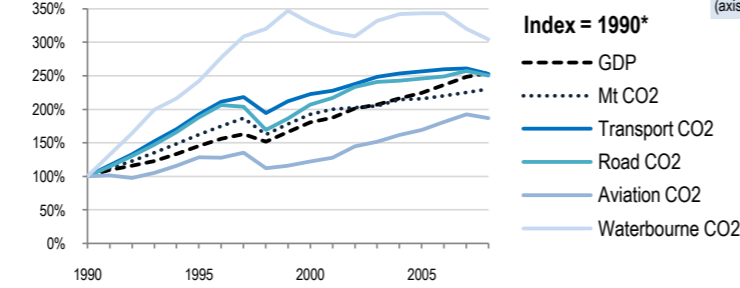
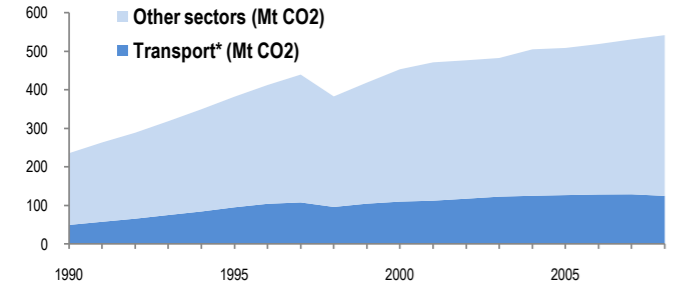


Korea



Change 1990-2008*	Mt (axis set -50%,100%)	2008	T/capita	2008, Kg/\$2000 PPP	2008	2007-2008	(%Mt)
Total CO ₂	130%	541.71	103%	11.14	-9%	0.48	2.1%
Transport CO ₂	153%	124.63	123%	2.56	-1%	0.11	-3.2%
Road CO ₂	150%	78.76	121%	1.62	-2%	0.07	-2.7%
Aviation CO ₂	87%	12.1	65%	0.25	-26%	0.01	-3.0%
Waterborne CO ₂	205%	31.92	169%	0.66	20%	0.03	-4.9%



Transport and the Economy	1990	1995	2000	2001	2002	2003	2004	2005	2006	2007	2008	1990-2008	%/year**	% 2007-2008
Population (millions)	42.87	45.09	47.01	47.36	47.62	47.86	48.04	48.14	48.30	48.46	48.61	13%	0.70%	0.31%
GDP PPP (billion 2000 US dollars)	448.59	653.37	809.43	841.59	901.77	927.04	969.86	1008.24	1060.45	1114.60	1139.38	154%	5.31%	2.22%
Road passenger km (million pkm)	0	0	0	267525	244955	238861	190571	200779	204339	204339	204339	..	-3.78%	0.00%
Road and Rail freight tkm (million tkm)	13663	13838	10803	101367	102778	109430	111698	110977	119562	116149	116788	755%	12.66%	0.55%
Road pkm/capita	0	0	0	5649	5144	4991	3967	4171	4231	4217	4204	..	-4.13%	-0.31%
Road and Rail freight tkm/\$ gdp	0.03	0.02	0.01	0.12	0.11	0.12	0.12	0.11	0.11	0.10	0.10	237%	6.97%	-1.64%
Passenger cars per 1000 inhabitants	48	133	172	188	205	215	221	230	240	248	10.14%	..

CO2 Emissions	1990	1995	2000	2001	2002	2003	2004	2005	2006	2007	2008	1990-2008	%/year**	% 2007-2008
IEA CO ₂ from fuel combustion (Mt)*	235.41	382.05	453.21	471.15	476.43	482.38	504.88	508.51	518.63	530.64	541.71	130%	4.74%	2.09%
... of which transport CO ₂ (Mt)*	49.32	95.05	109.79	112.18	117.31	122.67	124.91	126.65	128.23	128.76	124.63	153%	5.29%	-3.21%
Transport* as a percentage of total	21.0%	24.9%	24.2%	23.8%	24.6%	25.4%	24.7%	24.9%	24.7%	24.3%	23.0%
Road (Mt)	31.5	59.28	65.23	68.4	73.51	75.84	76.5	77.5	78.39	80.95	78.76	150%	5.22%	-2.71%
Rail (Mt)	0.88	0.93	0.97	0.97	0.97	1	0.85	0.8	0.73	0.67	0.66	-25%	-1.59%	-1.49%
Domestic Aviation (Mt)	5.63	6.26	6.2	6.32	6.59	6.24	6.55	3.69	2.89	3.08	0.82	-85%	-10.15%	-73.38%
International Aviation (Mt)	0.84	2.05	1.7	1.96	2.76	3.59	3.92	7.25	8.83	9.39	11.28	1243%	15.52%	20.13%
Domestic Navigation (Mt)	5.21	4.03	3.98	3.55	3.77	3.82	3.72	2.73	2.7	2.65	2.76	-47%	-3.47%	4.15%
International Shipping (Mt)	5.27	21.35	30.46	29.45	28.58	30.95	32.14	33.24	33.30	30.90	29.16	453%	9.97%	-5.63%
Other Transport (Mt)	0	1.14	1.25	1.53	1.13	1.22	1.21	1.44	1.37	1.11	1.2	..	0.40%	8.11%

GHG Emissions	1990	1995	2000	2001	2002	2003	2004	2005	2006	2007	2008	1990-2008	%/year**	% 2007-2008
UNFCCC GHG emissions (Mt CO ₂ eq.)*
UNFCCC GHG fuel combustion (Mt CO ₂ eq.)*
... of which transport GHG (Mt CO ₂ eq.)*
Road (Mt)
International Aviation (Mt)
International Shipping (Mt)

* includes emissions from international aviation and international maritime bunkers - there is no internationally agreed allocation mechanism for these and totals here are indicative of the scale of these emissions, not of their national "ownership" ** available yrs.