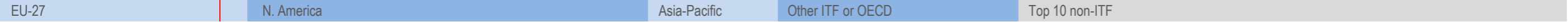
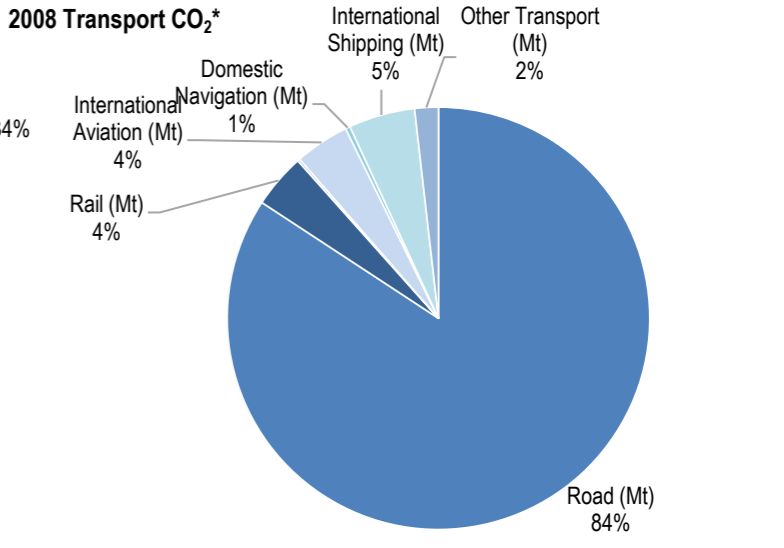
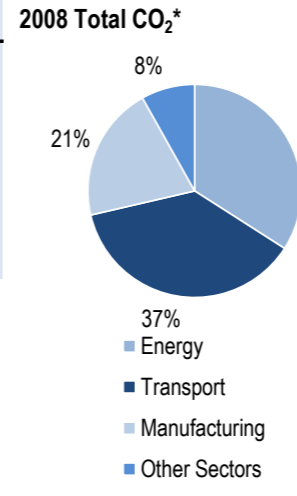
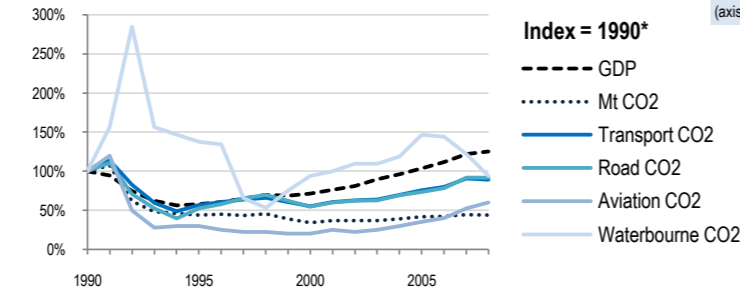
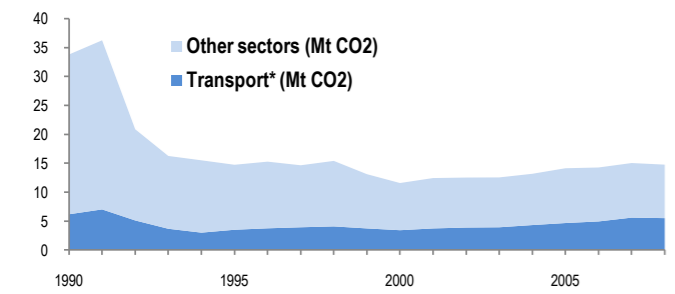


Lithuania



Change 1990-2008*	Mt (axis set -50%,100%)	2008	T/capita	2008, Kg/\$2000 PPP	2008	2007-2008	(%Mt)
Total CO ₂	14.8 Mt	14.75	-56%	4.39	-65%	0.27	-1.9%
Transport CO ₂		5.5	-11%	1.64	-29%	0.10	-1.6%
Road CO ₂		4.65	-8%	1.38	-27%	0.09	-0.4%
Aviation CO ₂		0.24	-40%	0.07	-52%	0.00	14.3%
Waterbourne CO ₂		0.3	-6%	0.09	-25%	0.01	-23.1%



Transport and the Economy	1990	1995	2000	2001	2002	2003	2004	2005	2006	2007	2008	1990-2008	%/year**	% 2007-2008
Population (millions)	3.70	3.63	3.50	3.48	3.47	3.45	3.44	3.41	3.39	3.38	3.36	-9%	-0.53%	-0.59%
GDP PPP (billion 2000 US dollars)	42.92	24.89	30.55	32.61	34.85	38.42	41.24	44.46	47.95	52.23	53.81	25%	1.26%	3.03%
Road passenger km (million pkm)	6677	3334	2266	2331	18542	21976	28939	38060	42755	42289	40943	513%	10.60%	-3.18%
Road and Rail freight tkm (million tkm)	26594	12380	16687	16015	20476	22920	23916	28365	31031	34651	35167	32%	1.56%	1.49%
Road pkm/capita	1805	918	647	670	5344	6370	8413	11161	12612	12512	12185	575%	11.19%	-2.61%
Road and Rail freight tkm/\$ gdp	0.62	0.50	0.55	0.49	0.59	0.60	0.58	0.64	0.65	0.66	0.65	5%	0.30%	-1.49%
Passenger cars per 1000 inhabitants	133	198	335	326	340	364	383	426	468	470	7.71%	..
CO2 Emissions														
IEA CO ₂ from fuel combustion (Mt)*	33.81	14.73	11.57	12.43	12.52	12.54	13.17	14.13	14.26	15.03	14.75	-56%	-4.50%	-1.86%
... of which transport CO ₂ (Mt)*	6.17	3.49	3.41	3.72	3.87	3.92	4.3	4.65	4.93	5.59	5.5	-11%	-0.64%	-1.61%
Transport* as a percentage of total	18.2%	23.7%	29.5%	29.9%	30.9%	31.3%	32.6%	32.9%	34.6%	37.2%	37.3%			
Road (Mt)	5.08	2.66	2.77	3.05	3.15	3.19	3.52	3.74	3.98	4.67	4.65	-8%	-0.49%	-0.43%
Rail (Mt)	0.35	0.24	0.22	0.19	0.21	0.23	0.22	0.23	0.22	0.22	0.23	-34%	-2.31%	4.55%
Domestic Aviation (Mt)	0	0	0	0.01	0.01	0.01	0.02	0	0	0	0.01
International Aviation (Mt)	0.40	0.12	0.08	0.09	0.08	0.09	0.1	0.14	0.16	0.21	0.23	-43%	-3.03%	9.52%
Domestic Navigation (Mt)	0.02	0	0.01	0.01	0.01	0.01	0.02	0.02	0.02	0.02	0.02	0%	0.00%	0.00%
International Shipping (Mt)	0.30	0.44	0.29	0.31	0.34	0.34	0.36	0.45	0.44	0.37	0.28	-7%	-0.38%	-24.32%
Other Transport (Mt)	0.02	0.02	0.03	0.06	0.06	0.06	0.06	0.08	0.1	0.1	0.1	400%	9.35%	0.00%
GHG Emissions														
UNFCCC GHG emissions (Mt CO ₂ eq.)*	50.45	22.50	19.77	20.95	21.36	21.63	22.46	23.58	24.34	26.05	24.86	-51%	-3.86%	-4.61%
UNFCCC GHG fuel combustion (Mt CO ₂ eq.)*	33.97	14.59	11.21	11.91	12.03	12.05	12.73	13.54	13.63	13.79	13.52	-60%	-4.99%	-1.96%
... of which transport GHG (Mt CO ₂ eq.)*	6.52	3.69	3.56	3.87	4.01	4.08	4.44	4.81	5.03	5.82	5.71	-12%	-0.73%	-1.83%
Road (Mt)	5.41	2.94	2.94	3.23	3.33	3.38	3.71	3.94	4.18	4.97	4.92	-9%	-0.52%	-0.93%
International Aviation (Mt)	0.42	0.13	0.08	0.10	0.09	0.10	0.11	0.14	0.16	0.20	0.24	-44%	-3.14%	15.83%
International Shipping (Mt)	0.31	0.46	0.30	0.32	0.36	0.35	0.37	0.47	0.45	0.39	0.29	-5%	-0.30%	-24.87%

* includes emissions from international aviation and international maritime bunkers - there is no internationally agreed allocation mechanism for these and totals here are indicative of the scale of these emissions, not of their national "ownership" ** available yrs.