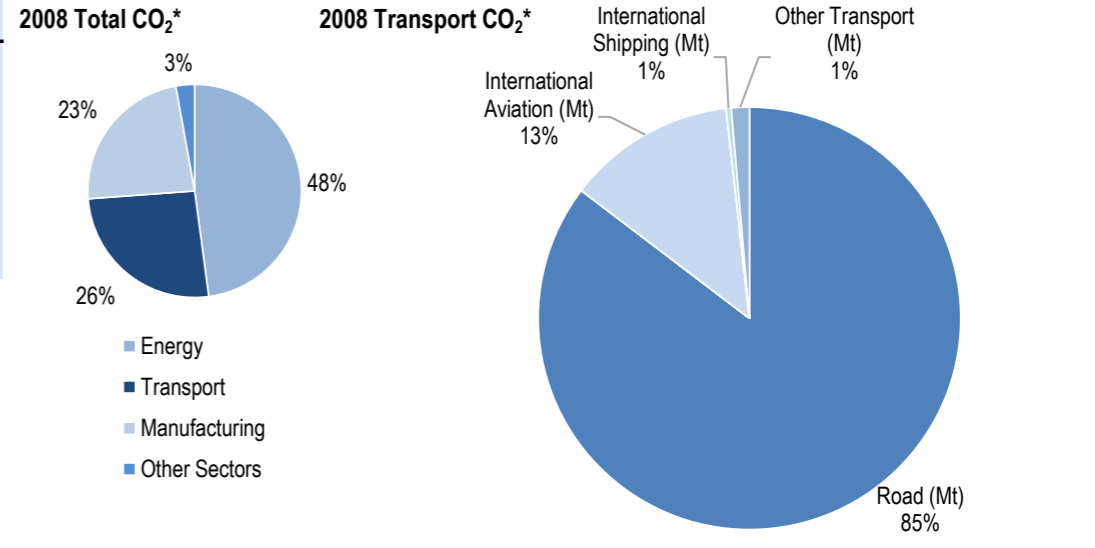
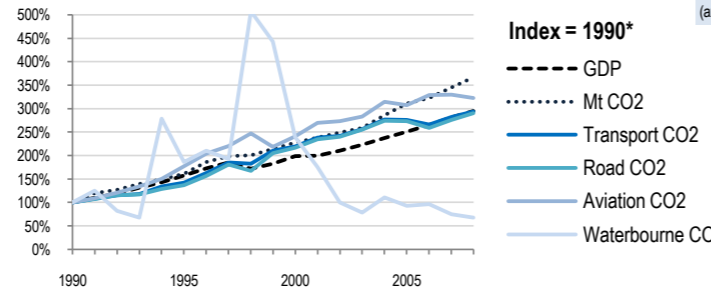
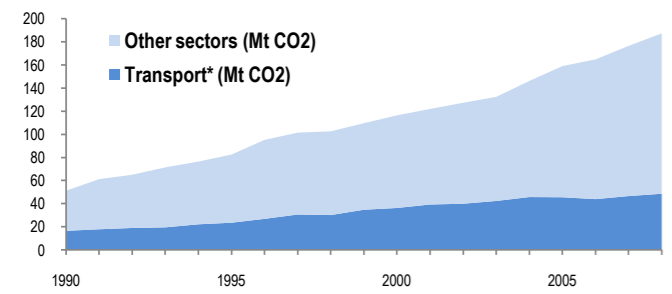


# Malaysia

EU-27      N. America      Asia-Pacific      Other ITF or OECD      Top 10 non-ITF      187.3 Mt

Change 1990-2008*	Mt (axis set -50%,100%)	2008	T/capita	2008, Kg/\$2000 PPP	2008	2007-2008	(%Mt)
Total CO <sub>2</sub>	266%	187.32	146%	6.94	24%	0.62	6.1%
Transport CO <sub>2</sub>	194%	48.59	97%	1.80	0%	0.16	4.3%
Road CO <sub>2</sub>	190%	41.47	94%	1.54	-2%	0.14	5.0%
Aviation CO <sub>2</sub>	223%	6.26	116%	0.23	9%	0.02	-2.0%
Waterbourne CO <sub>2</sub>	-32%	0.19	-54%	0.01	-77%	0.00	-9.5%



Transport and the Economy	1990	1995	2000	2001	2002	2003	2004	2005	2006	2007	2008	1990-2008	%/year**	% 2007-2008
Population (millions)	18.10	20.59	23.27	23.78	24.26	24.73	25.19	25.65	26.11	26.55	26.99	49%	2.24%	1.66%
GDP PPP (billion 2000 US dollars)	103.05	162.02	204.74	205.80	216.89	229.45	245.01	258.08	272.98	290.31	303.78	195%	6.19%	4.64%
Road passenger km (million pkm)	..	..	..	..	..	..	..	..	..	..	..	..	..	..
Road and Rail freight tkm (million tkm)	..	..	..	..	..	..	..	..	..	..	..	..	..	..
Road pkm/capita	..	..	..	..	..	..	..	..	..	..	..	..	..	..
Road and Rail freight tkm/\$ gdp	..	..	..	..	..	..	..	..	..	..	..	..	..	..
Passenger cars per 1000 inhabitants	101	127	183	197	211	225	..	..	..	..	..	..	6.36%	..

CO2 Emissions	1990	1995	2000	2001	2002	2003	2004	2005	2006	2007	2008	1990-2008	%/year**	% 2007-2008
IEA CO <sub>2</sub> from fuel combustion (Mt)*	51.14	82.45	116.4	121.94	127.25	132.39	146.12	159	164.77	176.5	187.32	266%	7.48%	6.13%
... of which transport CO <sub>2</sub> (Mt)*	16.52	23.53	36.29	39.29	39.97	42.36	45.72	45.55	43.94	46.58	48.59	194%	6.18%	4.32%
Transport* as a percentage of total	32.3%	28.5%	31.2%	32.2%	31.4%	32.0%	31.3%	28.6%	26.7%	26.4%	25.9%	..	..	..
Road (Mt)	14.3	19.57	30.94	33.54	34.33	36.55	39.18	39.13	37.04	39.48	41.47	190%	6.09%	5.04%
Rail (Mt)	0	0	0	0	0	0	0	0	0	0	0	..	..	..
Domestic Aviation (Mt)	0	0	0	0	0	0	0	0	0	0	0	..	..	..
International Aviation (Mt)	1.94	3.44	4.67	5.23	5.3	5.5	6.1	5.96	6.38	6.39	6.26	223%	6.72%	-2.03%
Domestic Navigation (Mt)	0	0	0	0	0	0	0	0	0	0	0	..	..	..
International Shipping (Mt)	0.28	0.52	0.67	0.49	0.28	0.22	0.31	0.26	0.27	0.21	0.19	-32%	-2.13%	-9.52%
Other Transport (Mt)	0	0	0.01	0.03	0.06	0.08	0.13	0.2	0.25	0.5	0.67	..	69.15%	34.00%

GHG Emissions	1990	1995	2000	2001	2002	2003	2004	2005	2006	2007	2008	1990-2008	%/year**	% 2007-2008
UNFCCC GHG emissions (Mt CO <sub>2</sub> eq.)*	..	..	..	..	..	..	..	..	..	..	..	..	..	..
UNFCCC GHG fuel combustion (Mt CO <sub>2</sub> eq.)*	..	..	..	..	..	..	..	..	..	..	..	..	..	..
... of which transport GHG (Mt CO <sub>2</sub> eq.)*	..	..	..	..	..	..	..	..	..	..	..	..	..	..
Road (Mt)	..	..	..	..	..	..	..	..	..	..	..	..	..	..
International Aviation (Mt)	..	..	..	..	..	..	..	..	..	..	..	..	..	..
International Shipping (Mt)	..	..	..	..	..	..	..	..	..	..	..	..	..	..

\* includes emissions from international aviation and international maritime bunkers - there is no internationally agreed allocation mechanism for these and totals here are indicative of the scale of these emissions, not of their national "ownership" \*\* available yrs.