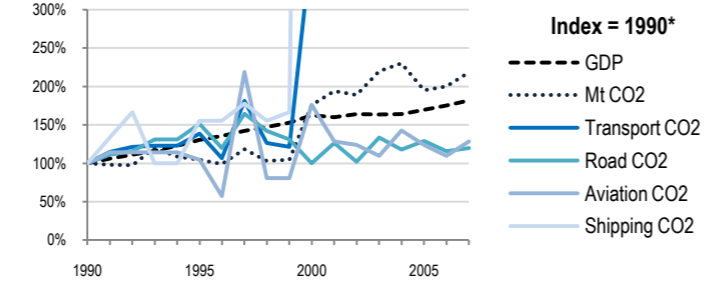
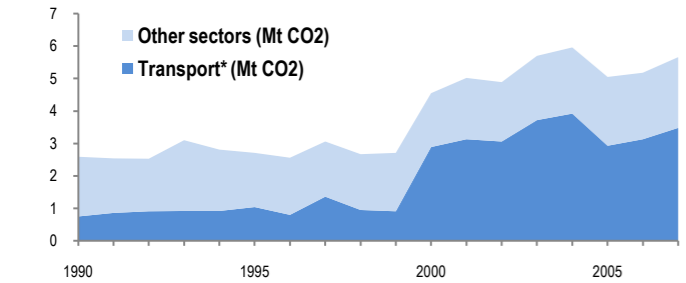
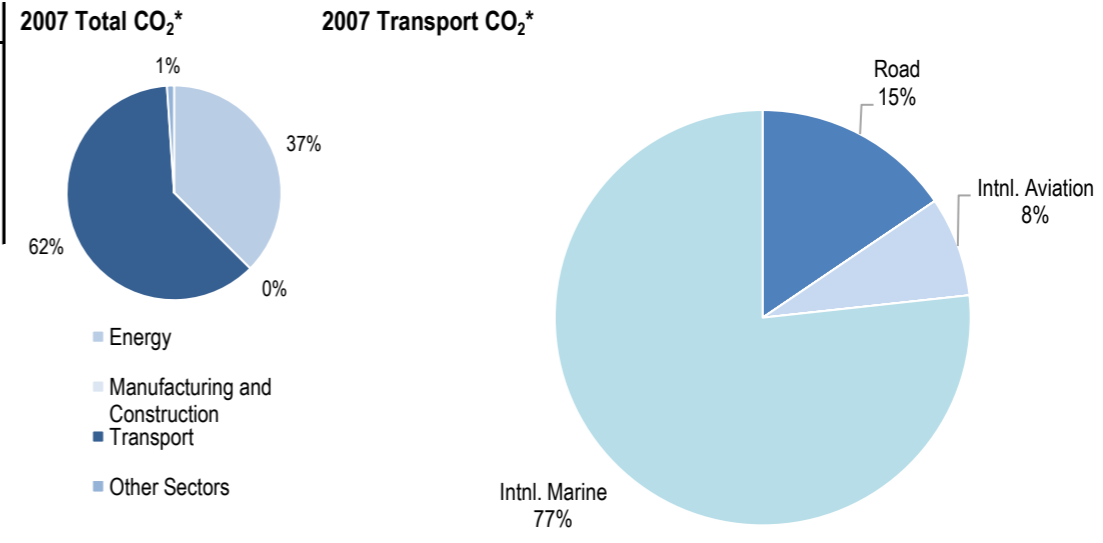


Malta



Change 1990-2007*	Mt	2007	T/capita	2007	Kg/\$2000 PPP	2007
Total CO ₂	119%	5.66	92%	13.80	20%	0.73
Transport CO ₂	364%	3.48	307%	8.49	155%	0.45
Road CO ₂	20%	0.54	5%	1.32	-34%	0.07
Aviation CO ₂	29%	0.27	13%	0.66	-29%	0.03
Shipping CO ₂	2867%	2.67	2505%	6.51	1533%	0.35



Transport and the Economy	1990	1995	2000	2001	2002	2003	2004	2005	2006	2007	1990-2007	% per year**
Population (millions)	0.36	0.38	0.39	0.39	0.40	0.40	0.40	0.40	0.41	0.41	14%	0.77%
GDP PPP (billion 2000 US dollars)	4.25	5.54	6.91	6.80	6.98	6.96	6.97	7.20	7.44	7.72	82%	3.57%
Road passenger km (million pkm)	0	0	0	0	0	0	0	0	0	0
Road and Rail freight tkm (million tkm)	0	0	0	0	0	0	0	0	0	0
Road pkm/capita	0.00	0.00	0.00	0.00	0.00	0.00	0.00	0.00	0.00	0.00
Road and Rail freight tkm/\$ of GDP	0.00	0.00	0.00	0.00	0.00	0.00	0.00	0.00	0.00	0.00
Passenger cars per 1000 inhabitants	..	390	485	491	505	520	523	3.31%
CO2 Emissions												
IEA CO ₂ from fuel combustion (Mt)*	2.59	2.71	4.55	5.02	4.89	5.7	5.96	5.05	5.18	5.66	119%	4.71%
... of which transport CO ₂ (Mt)*	0.75	1.04	2.89	3.13	3.06	3.72	3.92	2.93	3.13	3.48	364%	9.45%
Transport* as a percentage of total	29.0%	38.4%	63.5%	62.4%	62.6%	65.3%	65.8%	58.0%	60.4%	61.5%		
Road (Mt)	0.45	0.68	0.45	0.57	0.46	0.6	0.53	0.58	0.52	0.54	20%	1.08%
Rail (Mt)	0	0	0	0	0	0	0	0	0	0
Domestic Aviation (Mt)	0	0	0	0	0	0	0	0	0	0
International Aviation (Mt)	0.21	0.22	0.37	0.27	0.26	0.23	0.3	0.26	0.23	0.27	29%	1.49%
Domestic Navigation (Mt)	0	0	0	0	0	0	0	0	0	0
International Shipping (Mt)	0.09	0.14	2.07	2.29	2.34	2.89	3.09	2.09	2.38	2.67	2867%	22.07%
Other Transport (Mt)	0	0	0	0	0	0	0	0	0	0
GHG Emissions												
UNFCCC GHG emissions (Mt CO ₂ eq.)*
UNFCCC GHG fuel combustion (Mt CO ₂ eq.)*
... of which transport GHG (Mt CO ₂ eq.)*
Road (Mt)
International Aviation (Mt)
International Shipping (Mt)

* includes emissions from international aviation and international maritime bunkers - there is no internationally agreed allocation mechanism for these and totals here are indicative of the scale of these emissions, not of their national "ownership" ** available yrs.