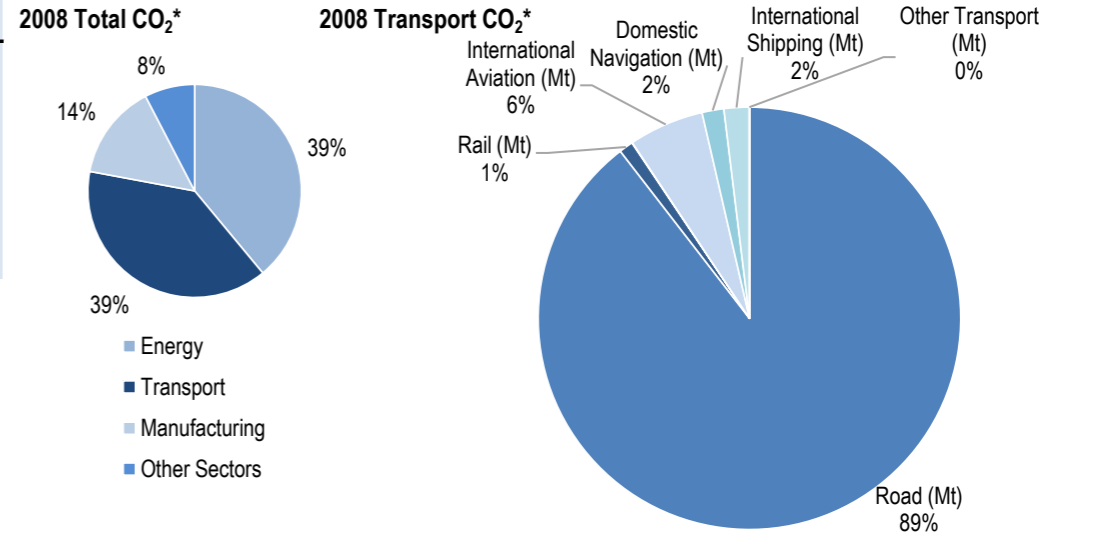
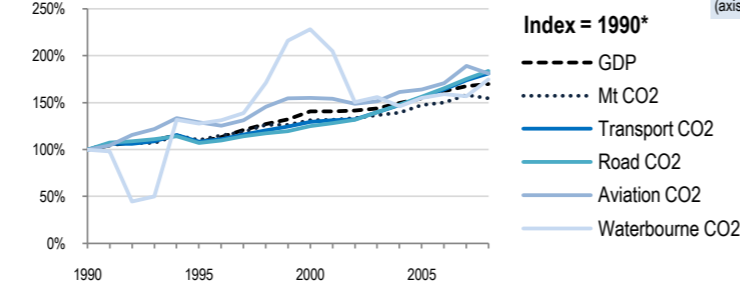
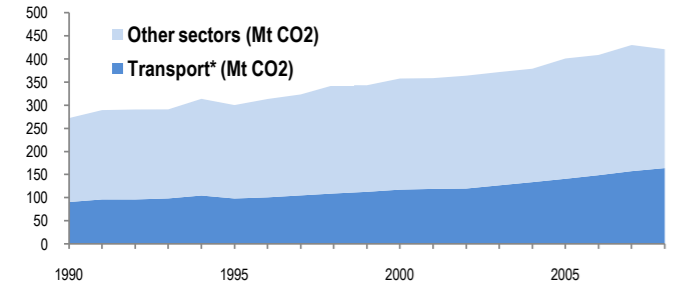


Mexico

EU-27 | **N. America** | 420.9 Mt | Asia-Pacific | Other ITF or OECD | Top 10 non-ITF

| Change 1990-2008* | Mt (axis set -50%,100%) | 2008 | T/capita | 2008, Kg/\$2000 PPP | 2008 | 2007-2008 | (%Mt) |
|-----------------------------|-------------------------|--------|----------|---------------------|------|-----------|-------|
| Total CO ₂ | 55% | 420.9 | 18% | 3.95 | -9% | 0.35 | -2.1% |
| Transport CO ₂ | 81% | 163.97 | 38% | 1.54 | 6% | 0.14 | 4.2% |
| Road CO ₂ | 84% | 146.8 | 40% | 1.38 | 8% | 0.12 | 4.7% |
| Aviation CO ₂ | 81% | 9.48 | 38% | 0.09 | 7% | 0.01 | -4.2% |
| Waterbourne CO ₂ | 75% | 5.92 | 33% | 0.06 | 3% | 0.00 | 11.3% |



| Transport and the Economy | 1990 | 1995 | 2000 | 2001 | 2002 | 2003 | 2004 | 2005 | 2006 | 2007 | 2008 | 1990-2008 | %/year** | % 2007-2008 |
|--|--------|--------|--------|--------|--------|---------|---------|---------|---------|---------|---------|-----------|----------|-------------|
| Population (millions) | 81.25 | 91.12 | 98.26 | 99.56 | 100.76 | 101.87 | 102.87 | 103.83 | 104.75 | 105.68 | 106.57 | 31% | 1.52% | 0.84% |
| GDP PPP (billion 2000 US dollars) | 701.59 | 756.89 | 987.11 | 986.79 | 994.40 | 1008.23 | 1048.68 | 1083.10 | 1137.65 | 1176.70 | 1192.56 | 70% | 2.99% | 1.35% |
| Road passenger km (million pkm) | 271512 | 383097 | 381700 | 389329 | 393200 | 399000 | 410000 | 422915 | 436999 | 449917 | 463865 | 71% | 3.02% | 3.10% |
| Road and Rail freight tkm (million tkm) | 145301 | 200440 | 242386 | 238516 | 244516 | 249332 | 254187 | 276402 | 283118 | 299560 | 301872 | 108% | 4.15% | 0.77% |
| Road pkm/capita | 3342 | 4204 | 3885 | 3910 | 3902 | 3917 | 3986 | 4073 | 4172 | 4257 | 4353 | 30% | 1.48% | 2.24% |
| Road and Rail freight tkm/\$ gdp | 0.21 | 0.26 | 0.25 | 0.24 | 0.25 | 0.25 | 0.24 | 0.26 | 0.25 | 0.25 | 0.25 | 22% | 1.12% | -0.57% |
| Passenger cars per 1000 inhabitants | 82 | 94 | 107 | .. | 128 | 137 | 131 | 137 | 147 | 167 | .. | .. | 4.27% | .. |
| CO2 Emissions | | | | | | | | | | | | | | |
| IEA CO ₂ from fuel combustion (Mt)* | 272.12 | 300.24 | 357.65 | 358.47 | 363.76 | 371.64 | 378.8 | 400.97 | 408.56 | 430.11 | 420.9 | 55% | 2.45% | -2.14% |
| ... of which transport CO ₂ (Mt)* | 90.59 | 98.25 | 117.37 | 118.97 | 119.74 | 126.74 | 133.6 | 140.83 | 148.66 | 157.33 | 163.97 | 81% | 3.35% | 4.22% |
| Transport* as a percentage of total | 33.3% | 32.7% | 32.8% | 33.2% | 32.9% | 34.1% | 35.3% | 35.1% | 36.4% | 36.6% | 39.0% | | | |
| Road (Mt) | 79.97 | 85.5 | 99.83 | 102.33 | 105.18 | 111.83 | 118.39 | 125.12 | 132.34 | 140.22 | 146.8 | 84% | 3.43% | 4.69% |
| Rail (Mt) | 2 | 1.69 | 1.71 | 1.61 | 1.66 | 1.7 | 1.83 | 1.87 | 1.99 | 1.88 | 1.77 | -12% | -0.68% | -5.85% |
| Domestic Aviation (Mt) | 0 | 0 | 0.06 | 0.05 | 0.05 | 0.05 | 0.05 | 0.06 | 0.06 | 0.06 | 0.06 | .. | 0.00% | 0.00% |
| International Aviation (Mt) | 5.23 | 6.75 | 8.05 | 8.02 | 7.74 | 7.88 | 8.38 | 8.52 | 8.88 | 9.84 | 9.42 | 80% | 3.32% | -4.27% |
| Domestic Navigation (Mt) | 1.36 | 1.77 | 3.9 | 3.27 | 2.38 | 2.48 | 2.35 | 2.56 | 2.6 | 2.63 | 2.74 | 101% | 3.97% | 4.18% |
| International Shipping (Mt) | 2.03 | 2.55 | 3.83 | 3.68 | 2.73 | 2.80 | 2.60 | 2.70 | 2.79 | 2.69 | 3.18 | 57% | 2.52% | 18.22% |
| Other Transport (Mt) | 0 | 0 | 0 | 0 | 0 | 0 | 0 | 0 | 0 | 0 | 0 | .. | .. | .. |
| GHG Emissions | | | | | | | | | | | | | | |
| UNFCCC GHG emissions (Mt CO ₂ eq.)* | .. | .. | .. | .. | .. | .. | .. | .. | .. | .. | .. | .. | .. | .. |
| UNFCCC GHG fuel combustion (Mt CO ₂ eq.)* | .. | .. | .. | .. | .. | .. | .. | .. | .. | .. | .. | .. | .. | .. |
| ... of which transport GHG (Mt CO ₂ eq.)* | .. | .. | .. | .. | .. | .. | .. | .. | .. | .. | .. | .. | .. | .. |
| Road (Mt) | .. | .. | .. | .. | .. | .. | .. | .. | .. | .. | .. | .. | .. | .. |
| International Aviation (Mt) | .. | .. | .. | .. | .. | .. | .. | .. | .. | .. | .. | .. | .. | .. |
| International Shipping (Mt) | .. | .. | .. | .. | .. | .. | .. | .. | .. | .. | .. | .. | .. | .. |

* includes emissions from international aviation and international maritime bunkers - there is no internationally agreed allocation mechanism for these and totals here are indicative of the scale of these emissions, not of their national "ownership" ** available yrs.