

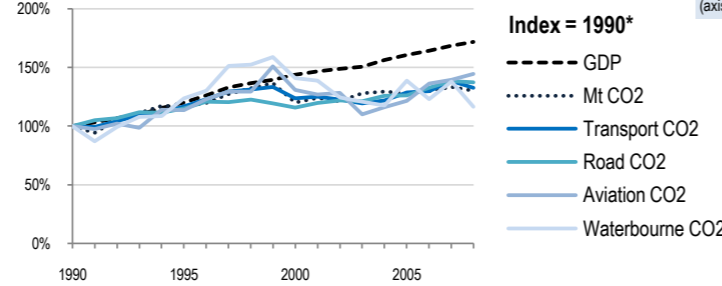
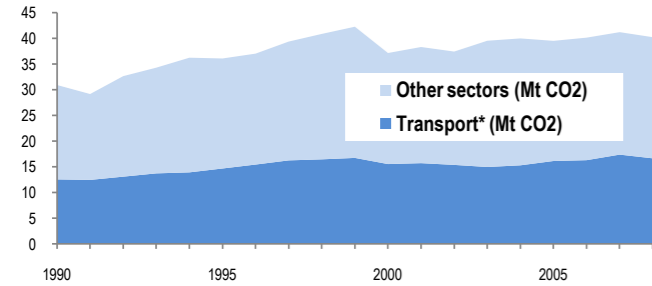
Norway

EU-27 N. America Asia-Pacific Other ITF or OECD Top 10 non-ITF

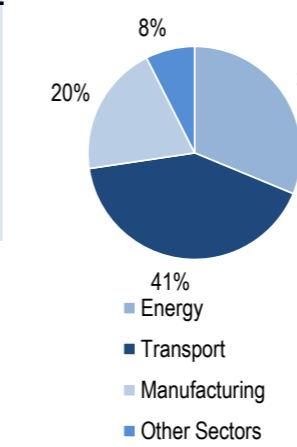
Change 1990-2008*

	Mt (axis set -50%,100%)	2008
Total CO ₂	30%	40.23
Transport CO ₂	33%	16.66
Road CO ₂	37%	10.43
Aviation CO ₂	44%	2.15
Waterborne CO ₂	17%	3.93

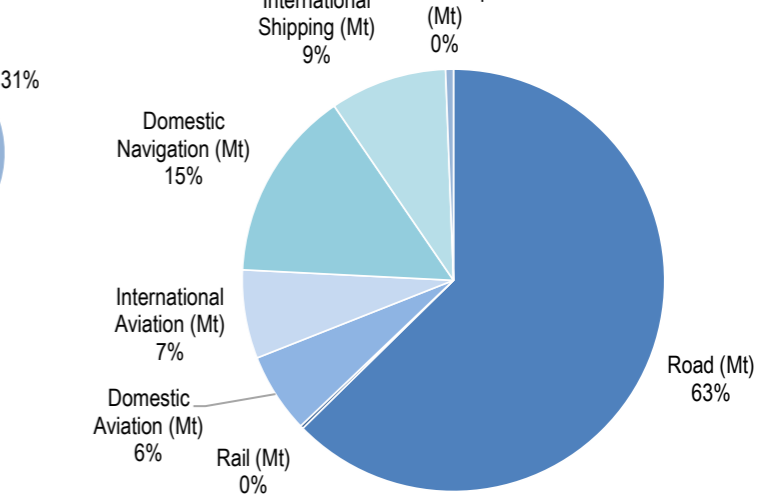
	T/capita	2008, Kg/\$2000 PPP	2008	2007-2008	(%Mt)
Total CO ₂	16%	8.43	-24%	0.21	-2.4%
Transport CO ₂	18%	3.49	-23%	0.09	-4.1%
Road CO ₂	22%	2.19	-20%	0.05	-0.8%
Aviation CO ₂	28%	0.45	-16%	0.01	3.4%
Waterborne CO ₂	4%	0.82	-32%	0.02	-15.5%



2008 Total CO₂*



2008 Transport CO₂*



Transport and the Economy	1990	1995	2000	2001	2002	2003	2004	2005	2006	2007	2008	1990-2008	%/year**	% 2007-2008
Population (millions)	4.24	4.36	4.49	4.51	4.54	4.57	4.59	4.62	4.66	4.71	4.77	13%	0.66%	1.27%
GDP PPP (billion 2000 US dollars)	112.78	135.42	162.26	165.49	167.98	169.68	176.24	181.06	185.19	190.25	193.70	72%	3.05%	1.81%
Road passenger km (million pkm)	47327	48482	53091	54162	55517	56344	56645	57327	57661	59207	58650	24%	1.20%	-0.94%
Road and Rail freight tkm (million tkm)	9864	11301	14792	14284	15333	15743	16668	17136	18067	18329	18630	89%	3.60%	1.64%
Road pkm/capita	11162	11120	11824	12009	12228	12329	12341	12408	12374	12570	12296	10%	0.54%	-2.19%
Road and Rail freight tkm/\$ gdp	0.09	0.08	0.09	0.09	0.09	0.09	0.09	0.09	0.10	0.10	0.10	10%	0.53%	-0.17%
Passenger cars per 1000 inhabitants	380	386	412	415	419	422	431	439	..	458	1.10%	..
CO2 Emissions														
IEA CO ₂ from fuel combustion (Mt)*	30.92	36.09	37.15	38.32	37.43	39.54	39.99	39.52	40.14	41.21	40.23	30%	1.47%	-2.38%
... of which transport CO ₂ (Mt)*	12.56	14.68	15.54	15.72	15.38	14.97	15.3	16.14	16.3	17.38	16.66	33%	1.58%	-4.14%
Transport* as a percentage of total	40.6%	40.7%	41.8%	41.0%	41.1%	37.9%	38.3%	40.8%	40.6%	42.2%	41.4%			
Road (Mt)	7.6	8.73	8.79	9.11	9.25	9.2	9.55	9.6	10.07	10.51	10.43	37%	1.77%	-0.76%
Rail (Mt)	0.1	0.1	0.05	0.05	0.03	0.04	0.05	0.04	0.04	0.04	0.04	-60%	-4.96%	0.00%
Domestic Aviation (Mt)	0.25	0.6	0.9	0.82	0.73	0.92	0.91	0.77	0.83	0.96	1.02	308%	8.12%	6.25%
International Aviation (Mt)	1.24	1.09	1.05	1.07	1.18	0.72	0.82	1.04	1.2	1.12	1.13	-9%	-0.51%	0.89%
Domestic Navigation (Mt)	1.98	1.98	2.19	2.15	2.12	2.33	2.36	2.51	2.58	2.6	2.44	23%	1.17%	-6.15%
International Shipping (Mt)	1.39	2.19	2.56	2.52	2.07	1.74	1.60	2.16	1.56	2.05	1.49	7%	0.39%	-27.32%
Other Transport (Mt)	0	0	0	0	0	0.01	0.02	0.02	0.02	0.09	0.1	11.11%
GHG Emissions														
UNFCCC GHG emissions (Mt CO ₂ eq.)*	51.86	52.57	56.85	57.96	56.08	56.85	57.49	56.94	56.88	58.41	56.99	10%	0.53%	-2.43%
UNFCCC GHG fuel combustion (Mt CO ₂ eq.)*	28.64	31.89	34.67	36.70	36.24	37.56	37.69	37.73	38.85	39.04	38.53	35%	1.66%	-1.30%
... of which transport GHG (Mt CO ₂ eq.)*	13.43	15.22	16.89	17.07	16.33	16.63	17.11	17.73	18.53	19.05	18.59	38%	1.82%	-2.42%
Road (Mt)	7.74	8.23	8.54	9.06	9.15	9.30	9.62	9.79	10.08	10.30	10.16	31%	1.52%	-1.37%
International Aviation (Mt)	0.63	0.59	0.92	0.84	0.75	0.76	0.86	1.09	1.26	1.17	1.18	89%	3.61%	1.24%
International Shipping (Mt)	1.49	2.28	2.63	2.62	2.09	2.08	1.99	2.28	2.29	2.10	2.10	41%	1.92%	0.23%

* includes emissions from international aviation and international maritime bunkers - there is no internationally agreed allocation mechanism for these and totals here are indicative of the scale of these emissions, not of their national "ownership" ** available yrs.