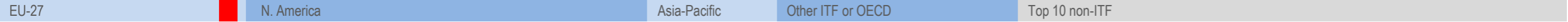
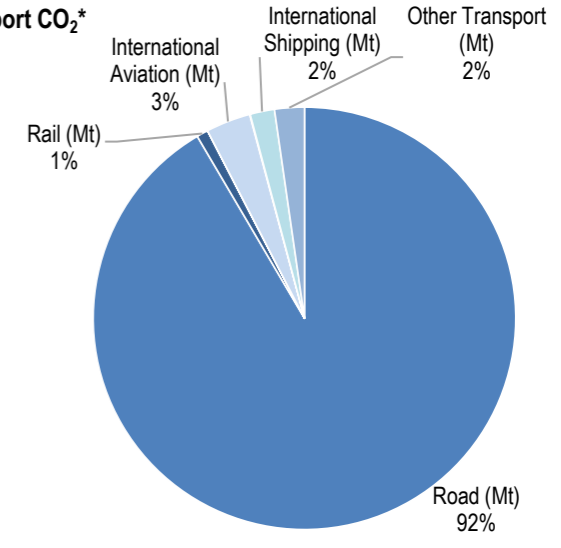
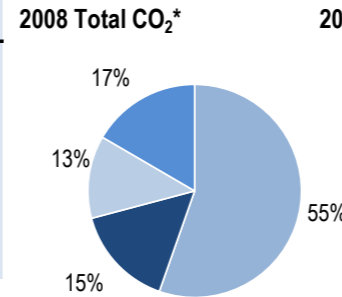
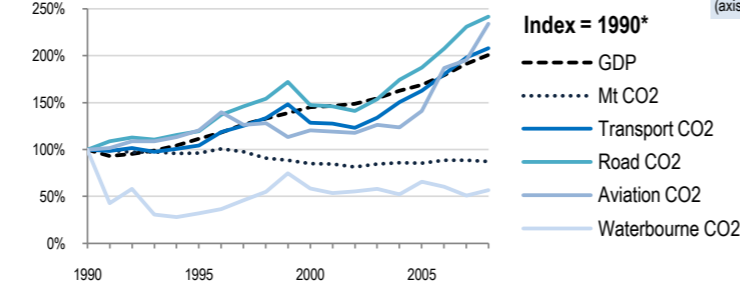
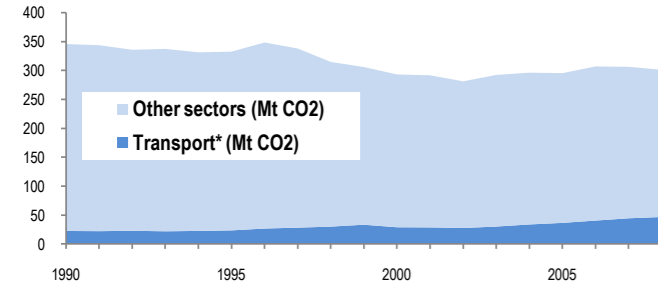


Poland



Change 1990-2008*	Mt (axis set -50%,100%)	2008	T/capita	2008, Kg/\$2000 PPP	2008	2007-2008	(%Mt)
Total CO <sub>2</sub>	-13%	301.15	-13%	7.90	0.54	-1.7%	
Transport CO <sub>2</sub>	108%	46.62	108%	1.22	0.08	5.1%	
Road CO <sub>2</sub>	142%	42.67	141%	1.12	0.08	4.7%	
Aviation CO <sub>2</sub>	134%	1.59	133%	0.04	0.00	19.5%	
Waterbourne CO <sub>2</sub>	-43%	0.89	-43%	0.02	0.00	11.3%	



Transport and the Economy	1990	1995	2000	2001	2002	2003	2004	2005	2006	2007	2008	1990-2008	%/year**	% 2007-2008
Population (millions)	38.03	38.28	38.26	38.25	38.23	38.20	38.18	38.16	38.13	38.12	38.12	0%	0.01%	0.00%
GDP PPP (billion 2000 US dollars)	278.94	310.63	404.30	409.17	415.08	431.13	454.18	470.60	499.91	533.83	560.54	101%	3.95%	5.00%
Road passenger km (million pkm)	114400	144724	181435	188696	196695	202396	211618	226614	247388	266619	300294	162%	5.51%	12.63%
Road and Rail freight tkm (million tkm)	123823	119406	129038	124884	128065	135562	162797	169712	190113	213780	226266	83%	3.41%	5.84%
Road pkm/capita	3008	3781	4742	4933	5145	5298	5543	5939	6488	6994	7878	162%	5.49%	12.63%
Road and Rail freight tkm/\$ gdp	0.44	0.38	0.32	0.31	0.31	0.31	0.36	0.36	0.38	0.40	0.40	-9%	-0.53%	0.80%
Passenger cars per 1000 inhabitants	138	195	259	..	288	294	314	323	351	383	..	..	6.19%	..

CO2 Emissions	1990	1995	2000	2001	2002	2003	2004	2005	2006	2007	2008	1990-2008	%/year**	% 2007-2008
IEA CO <sub>2</sub> from fuel combustion (Mt)*	345.74	332.62	293.16	291.67	281.23	292.33	296.21	295.42	307.04	306.33	301.15	-13%	-0.76%	-1.69%
... of which transport CO <sub>2</sub> (Mt)*	22.41	23.39	28.79	28.58	27.56	30.05	33.71	36.41	40.39	44.35	46.62	108%	4.15%	5.12%
Transport* as a percentage of total	6.5%	7.0%	9.8%	9.8%	9.8%	10.3%	11.4%	12.3%	13.2%	14.5%	15.5%			
Road (Mt)	17.66	21.15	26.01	25.81	24.92	27.17	30.82	33.08	36.66	40.75	42.67	142%	5.02%	4.71%
Rail (Mt)	2.43	0.86	0.52	0.5	0.48	0.5	0.5	0.49	0.45	0.47	0.41	-83%	-9.41%	-12.77%
Domestic Aviation (Mt)	0	0	0	0	0	0	0	0	0	0	0	..	..	..
International Aviation (Mt)	0.68	0.82	0.82	0.81	0.8	0.86	0.84	0.96	1.27	1.33	1.59	134%	4.83%	19.55%
Domestic Navigation (Mt)	0.33	0.06	0.02	0.02	0.02	0.02	0.02	0.02	0.02	0.02	0.02	-94%	-14.42%	0.00%
International Shipping (Mt)	1.24	0.44	0.90	0.82	0.85	0.89	0.80	1.01	0.93	0.78	0.87	-30%	-1.95%	11.54%
Other Transport (Mt)	0.06	0.06	0.52	0.63	0.5	0.6	0.73	0.85	1.06	1	1.06	1667%	17.30%	6.00%

GHG Emissions	1990	1995	2000	2001	2002	2003	2004	2005	2006	2007	2008	1990-2008	%/year**	% 2007-2008
UNFCCC GHG emissions (Mt CO <sub>2</sub> eq.)*	455.26	441.98	392.21	388.70	375.74	387.47	388.30	391.94	405.21	401.98	397.98	-13%	-0.74%	-1.00%
UNFCCC GHG fuel combustion (Mt CO <sub>2</sub> eq.)*	354.34	354.53	308.64	307.96	297.44	306.49	306.07	304.16	314.09	308.72	305.14	-14%	-0.83%	-1.16%
... of which transport GHG (Mt CO <sub>2</sub> eq.)*	27.33	30.68	34.72	33.78	33.73	34.34	36.27	38.42	40.90	40.90	45.11	65%	2.82%	10.31%
Road (Mt)	21.61	26.81	31.17	30.39	30.13	30.90	32.90	34.64	36.73	36.80	40.63	88%	3.57%	10.40%
International Aviation (Mt)	0.58	1.09	1.09	1.02	1.25	0.84	0.83	0.94	1.25	1.31	1.57	172%	5.71%	20.14%
International Shipping (Mt)	1.37	0.61	0.92	0.84	0.87	0.91	0.81	1.03	0.95	0.80	0.85	-38%	-2.60%	6.28%

\* includes emissions from international aviation and international maritime bunkers - there is no internationally agreed allocation mechanism for these and totals here are indicative of the scale of these emissions, not of their national "ownership" \*\* available yrs.