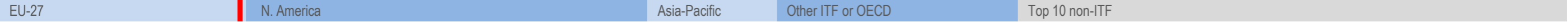
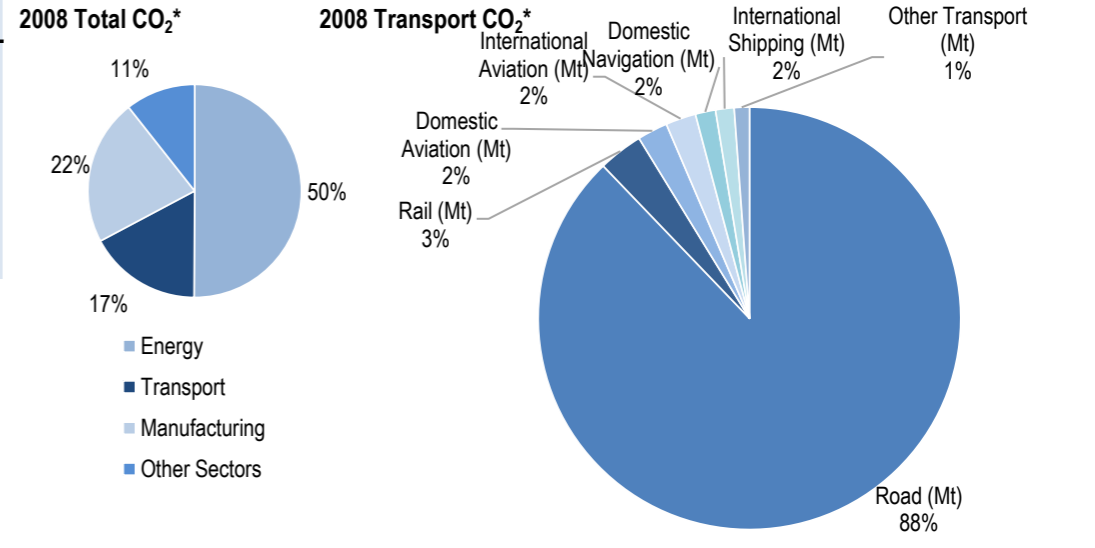
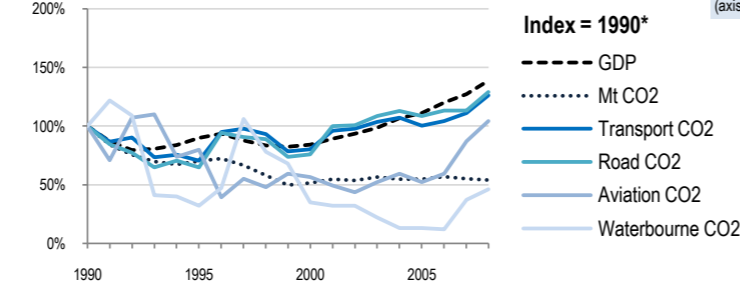
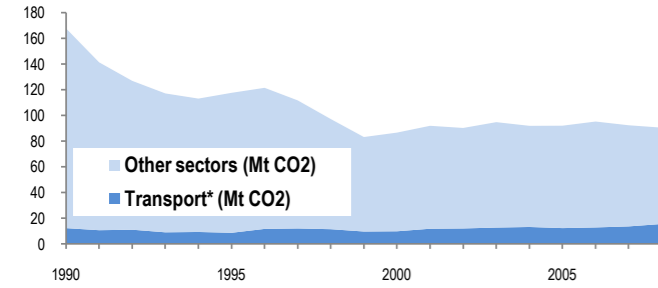


Romania



Change 1990-2008*	Mt (axis set -50%,100%)	2008	T/capita	2008, Kg/\$2000 PPP	2008	2007-2008	(%Mt)
Total CO ₂	-46%	90.51	-42%	4.21	-61%	0.42	-2.0%
Transport CO ₂	26%	15.51	36%	0.72	-9%	0.07	13.6%
Road CO ₂	29%	13.64	39%	0.63	-7%	0.06	13.9%
Aviation CO ₂	4%	0.72	13%	0.03	-25%	0.00	20.0%
Waterbourne CO ₂	-54%	0.46	-50%	0.02	-67%	0.00	24.3%



Transport and the Economy	1990	1995	2000	2001	2002	2003	2004	2005	2006	2007	2008	1990-2008	%/year**	% 2007-2008
Population (millions)	23.21	22.68	22.44	22.13	21.80	21.74	21.69	21.63	21.59	21.55	21.51	-7%	-0.42%	-0.19%
GDP PPP (billion 2000 US dollars)	157.05	141.03	132.28	139.82	146.95	154.59	167.58	174.57	188.36	199.67	218.09	39%	1.84%	9.23%
Road passenger km (million pkm)	24007	12343	7700	7073	6987	9455	9438	11812	11735	12156	13881	-42%	-3.00%	14.19%
Road and Rail freight tkm (million tkm)	62461	31365	27861	28605	28473	30579	33077	35981	38507	39684	38419	-38%	-2.66%	-3.19%
Road pkm/capita	1034	544	343	320	321	435	435	546	544	564	645	-38%	-2.59%	14.40%
Road and Rail freight tkm/\$ gdp	0.40	0.22	0.21	0.20	0.19	0.20	0.20	0.21	0.20	0.20	0.18	-56%	-4.42%	-11.36%
Passenger cars per 1000 inhabitants	142	149	156

CO2 Emissions	1990	1995	2000	2001	2002	2003	2004	2005	2006	2007	2008	1990-2008	%/year**	% 2007-2008
IEA CO ₂ from fuel combustion (Mt)*	167.77	117.61	86.64	91.95	90.26	94.79	91.93	92.03	95.26	92.36	90.51	-46%	-3.37%	-2.00%
... of which transport CO ₂ (Mt)*	12.3	8.66	9.85	11.81	12.04	12.73	13.19	12.32	12.84	13.65	15.51	26%	1.30%	13.63%
Transport* as a percentage of total	7.3%	7.4%	11.4%	12.8%	13.3%	13.4%	14.3%	13.4%	13.5%	14.8%	17.1%			
Road (Mt)	10.58	6.87	8.02	10.59	10.66	11.48	11.94	11.47	11.97	11.98	13.64	29%	1.42%	13.86%
Rail (Mt)	0.03	0.88	0.9	0.45	0.6	0.53	0.61	0.23	0.22	0.56	0.53	1667%	17.30%	-5.36%
Domestic Aviation (Mt)	0	0.01	0.02	0.01	0.01	0.01	0.01	0.03	0.01	0.28	0.36	..	31.74%	28.57%
International Aviation (Mt)	0.69	0.54	0.37	0.33	0.29	0.35	0.4	0.33	0.4	0.32	0.36	-48%	-3.55%	12.50%
Domestic Navigation (Mt)	1	0.32	0.35	0.32	0.32	0.22	0.13	0.13	0.12	0.26	0.24	-76%	-7.62%	-7.69%
International Shipping (Mt)	0	0	0	0	0	0	0	0	0	0	0.22	100.00%
Other Transport (Mt)	0	0.05	0.18	0.1	0.15	0.15	0.11	0.13	0.12	0.14	0.18	..	10.36%	28.57%

GHG Emissions	1990	1995	2000	2001	2002	2003	2004	2005	2006	2007	2008	1990-2008	%/year**	% 2007-2008
UNFCCC GHG emissions (Mt CO ₂ eq.)*	243.15	181.07	136.72	141.24	147.43	154.11	155.89	150.02	154.72	153.28	147.03	-40%	-2.76%	-4.08%
UNFCCC GHG fuel combustion (Mt CO ₂ eq.)*	150.25	112.88	83.50	88.36	92.51	98.11	98.10	91.21	94.64	93.83	90.61	-40%	-2.77%	-3.43%
... of which transport GHG (Mt CO ₂ eq.)*	8.74	8.91	9.89	11.47	12.38	12.57	15.00	12.39	12.89	13.49	15.79	81%	3.34%	17.08%
Road (Mt)	6.51	7.31	8.29	10.65	11.36	11.55	13.92	11.56	12.02	12.10	14.01	115%	4.35%	15.83%
International Aviation (Mt)	0.17	0.36	0.28	0.27	0.25	0.34	0.36	0.41	0.45	0.42	0.90	427%	9.68%	112.60%
International Shipping (Mt)	0.88	0.24	0.21	0.03	0.07	0.03	0.04	0.09	0.09	0.22	0.22	-75%	-7.43%	1.57%

* includes emissions from international aviation and international maritime bunkers - there is no internationally agreed allocation mechanism for these and totals here are indicative of the scale of these emissions, not of their national "ownership" ** available yrs.