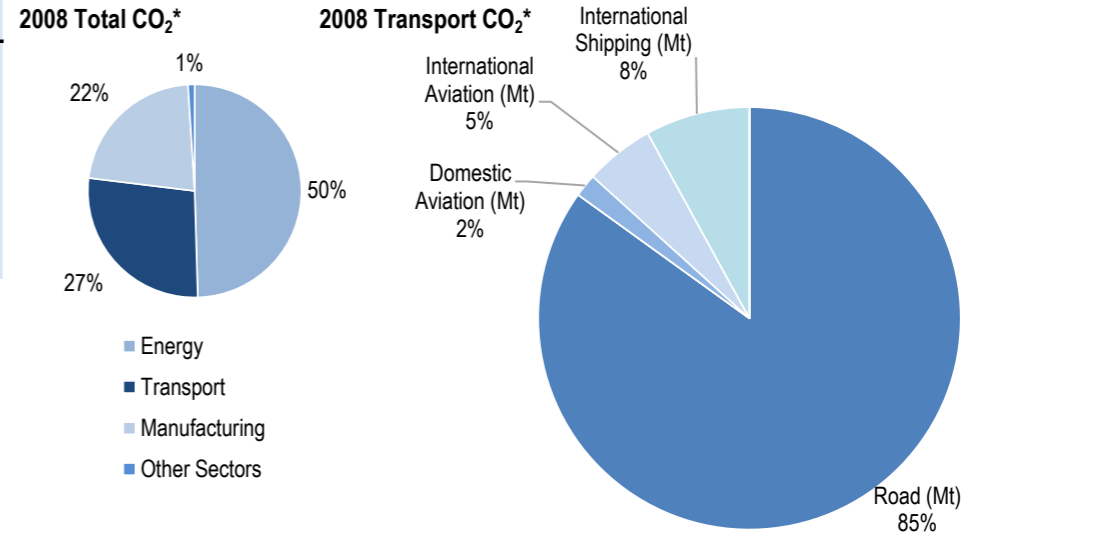
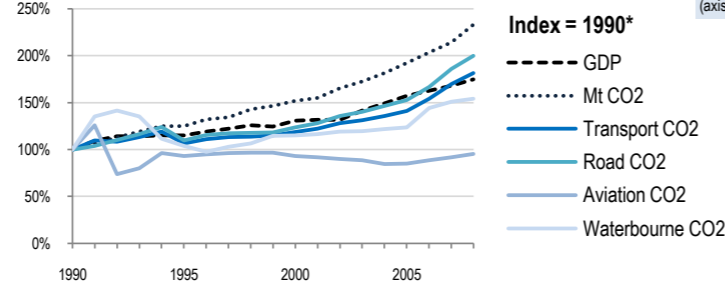
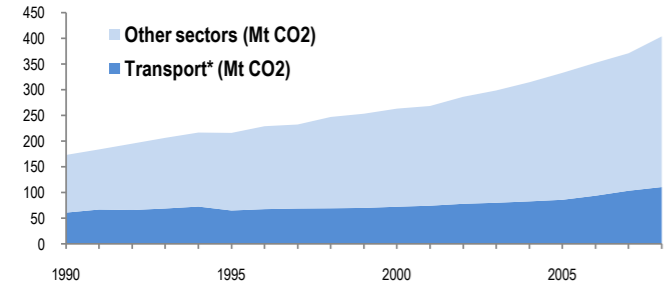


Saudi Arabia

EU-27 N. America Asia-Pacific Other ITF or OECD Top 10 non-ITF 403.9 Mt

Change 1990-2008*	Mt (axis set -50%,100%)	2008	T/capita	2008, Kg/\$2000 PPP	2008	2007-2008	(%Mt)
Total CO ₂	133%	403.87	55%	16.38	33%	1.08	8.8%
Transport CO ₂	82%	110.67	21%	4.49	4%	0.29	6.9%
Road CO ₂	100%	94.01	33%	3.81	14%	0.25	7.6%
Aviation CO ₂	-5%	7.81	-37%	0.32	-45%	0.02	3.9%
Waterbourne CO ₂	54%	8.85	2%	0.36	-12%	0.02	2.2%



Transport and the Economy	1990	1995	2000	2001	2002	2003	2004	2005	2006	2007	2008	1990-2008	%/year**	% 2007-2008
Population (millions)	16.38	18.51	20.66	21.12	21.59	22.05	22.53	23.12	23.68	24.16	24.65	50%	2.30%	2.03%
GDP PPP (billion 2000 US dollars)	214.80	247.40	280.85	282.39	282.75	304.40	320.44	338.23	348.91	360.71	375.69	75%	3.15%	4.15%
Road passenger km (million pkm)
Road and Rail freight tkm (million tkm)
Road pkm/capita
Road and Rail freight tkm/\$ gdp
Passenger cars per 1000 inhabitants	98	94	375	383	397	407	415	10.86%	..

CO ₂ Emissions	1990	1995	2000	2001	2002	2003	2004	2005	2006	2007	2008	1990-2008	%/year**	% 2007-2008
IEA CO ₂ from fuel combustion (Mt)*	173.17	216.04	263.29	268.42	286.29	298.69	314.63	332.96	352.52	371.12	403.87	133%	4.82%	8.82%
... of which transport CO ₂ (Mt)*	60.93	65.05	72.38	74.4	78.06	80.08	82.81	85.9	93.86	103.52	110.67	82%	3.37%	6.91%
Transport* as a percentage of total	35.2%	30.1%	27.5%	27.7%	27.3%	26.8%	26.3%	25.8%	26.6%	27.9%	27.4%
Road (Mt)	47	51.48	58.15	60.2	63.85	65.97	68.88	71.85	78.35	87.34	94.01	100%	3.93%	7.64%
Rail (Mt)	0	0	0	0	0	0	0	0	0	0	0
Domestic Aviation (Mt)	2.05	1.9	1.91	1.88	1.84	1.81	1.73	1.74	1.81	1.88	1.95	-5%	-0.28%	3.72%
International Aviation (Mt)	6.14	5.71	5.72	5.64	5.53	5.43	5.2	5.22	5.43	5.64	5.86	-5%	-0.26%	3.90%
Domestic Navigation (Mt)	0	0	0	0	0	0	0	0	0	0	0
International Shipping (Mt)	5.74	5.96	6.60	6.68	6.84	6.87	7.00	7.09	8.27	8.66	8.85	54%	2.43%	2.19%
Other Transport (Mt)	0	0	0	0	0	0	0	0	0	0	0

GHG Emissions	1990	1995	2000	2001	2002	2003	2004	2005	2006	2007	2008	1990-2008	%/year**	% 2007-2008
UNFCCC GHG emissions (Mt CO ₂ eq.)*
UNFCCC GHG fuel combustion (Mt CO ₂ eq.)*
... of which transport GHG (Mt CO ₂ eq.)*
Road (Mt)
International Aviation (Mt)
International Shipping (Mt)

* includes emissions from international aviation and international maritime bunkers - there is no internationally agreed allocation mechanism for these and totals here are indicative of the scale of these emissions, not of their national "ownership" ** available yrs.