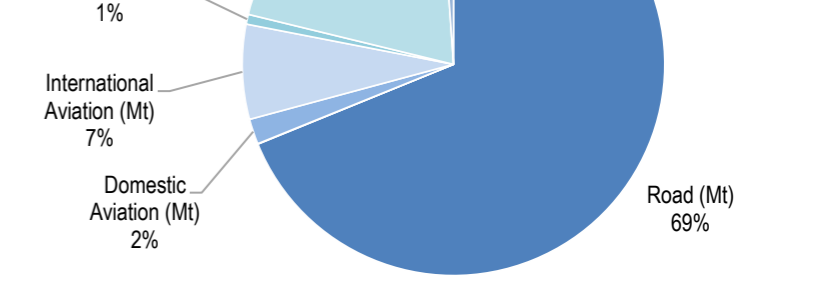
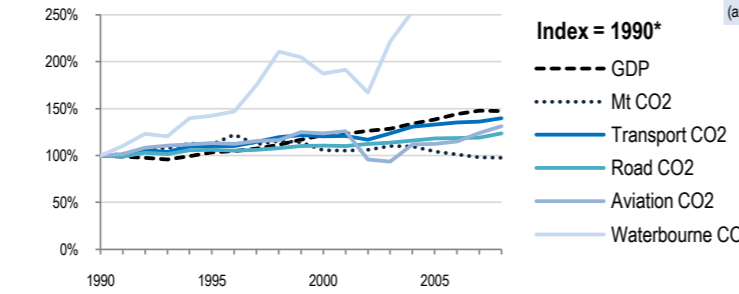
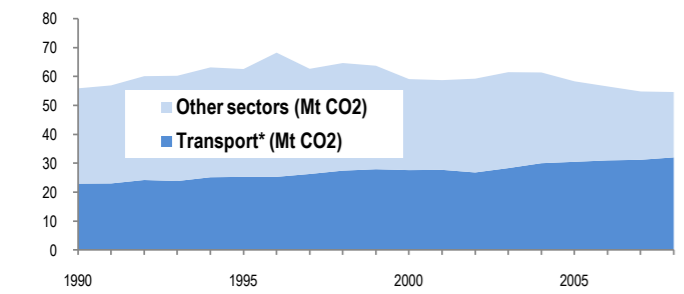


Sweden



Change 1990-2008*	Mt (axis set -50%,100%)	2008	T/capita	2008, Kg/\$2000 PPP	2008	2007-2008	(%Mt)
Total CO ₂	-2%	54.62	-10%	5.90	-34%	0.18	-0.4%
Transport CO ₂	40%	32.01	29%	3.46	-5%	0.11	2.6%
Road CO ₂	24%	22.02	14%	2.38	-16%	0.07	3.9%
Aviation CO ₂	31%	2.94	21%	0.32	-11%	0.01	5.8%
Waterbourne CO ₂	163%	6.67	143%	0.72	78%	0.02	-3.1%



Transport and the Economy	1990	1995	2000	2001	2002	2003	2004	2005	2006	2007	2008	1990-2008	%/year**	% 2007-2008
Population (millions)	8.56	8.83	8.87	8.90	8.93	8.96	8.99	9.03	9.08	9.15	9.26	8%	0.44%	1.20%
GDP PPP (billion 2000 US dollars)	202.11	209.00	246.30	248.90	254.90	259.78	270.50	279.42	291.29	298.70	298.05	47%	2.18%	-0.22%
Road passenger km (million pkm)	95600	97300	101400	102000	104700	105400	105900	106100	105700	108100	106900	12%	0.62%	-1.11%
Road and Rail freight tkm (million tkm)	36091	38684	43775	42471	44208	44289	45860	48807	50349	52057	53908	49%	2.25%	3.56%
Road pkm/capita	11168	11019	11432	11461	11725	11763	11780	11750	11641	11814	11544	3%	0.18%	-2.28%
Road and Rail freight tkm/\$ gdp	0.18	0.19	0.18	0.17	0.17	0.17	0.17	0.17	0.17	0.17	0.18	1%	0.07%	3.78%
Passenger cars per 1000 inhabitants	426	411	451	452	453	455	458	460	462	465	0.52%	..
CO2 Emissions														
IEA CO ₂ from fuel combustion (Mt)*	55.91	62.58	59.1	58.74	59.25	61.5	61.4	58.33	56.56	54.82	54.62	-2%	-0.13%	-0.36%
... of which transport CO ₂ (Mt)*	22.93	25.29	27.61	27.7	26.8	28.3	30	30.48	30.97	31.19	32.01	40%	1.87%	2.63%
Transport* as a percentage of total	41.0%	40.4%	46.7%	47.2%	45.2%	46.0%	48.9%	52.3%	54.8%	56.9%	58.6%			
Road (Mt)	17.82	18.91	19.74	19.65	20	20.23	20.63	21.08	21.11	21.19	22.02	24%	1.18%	3.92%
Rail (Mt)	0.12	0.12	0.07	0.07	0.08	0.08	0.07	0.01	0.01	0.01	0.01	-92%	-12.89%	0.00%
Domestic Aviation (Mt)	1.17	0.78	0.71	0.72	0.59	0.58	0.66	0.65	0.62	0.85	0.62	-47%	-3.47%	-27.06%
International Aviation (Mt)	1.07	1.76	2.06	2.1	1.56	1.51	1.85	1.87	1.96	1.93	2.32	117%	4.39%	20.21%
Domestic Navigation (Mt)	0.45	0.32	0.48	0.48	0.46	0.54	0.46	0.45	0.38	0.34	0.24	-47%	-3.43%	-29.41%
International Shipping (Mt)	2.09	3.30	4.28	4.38	3.79	5.09	5.99	6.12	6.57	6.54	6.43	208%	6.44%	-1.68%
Other Transport (Mt)	0.21	0.1	0.27	0.29	0.32	0.28	0.34	0.31	0.32	0.32	0.35	67%	2.88%	9.38%
GHG Emissions														
UNFCCC GHG emissions (Mt CO ₂ eq.)*	76.05	79.29	75.66	76.10	76.15	78.08	78.84	76.42	76.55	75.86	73.45	-3%	-0.19%	-3.18%
UNFCCC GHG fuel combustion (Mt CO ₂ eq.)*	56.49	59.68	56.73	57.29	57.41	59.76	60.08	58.01	57.77	57.38	55.34	-2%	-0.11%	-3.56%
... of which transport GHG (Mt CO ₂ eq.)*	22.64	24.38	26.50	26.52	26.27	27.97	29.51	30.06	30.44	30.93	30.18	33%	1.61%	-2.43%
Road (Mt)	17.51	18.13	18.19	18.42	19.03	19.26	19.60	19.88	19.77	19.91	19.36	11%	0.56%	-2.78%
International Aviation (Mt)	1.35	1.46	1.95	1.90	1.63	1.59	1.79	1.96	2.03	2.22	2.38	76%	3.20%	7.14%
International Shipping (Mt)	2.26	3.56	4.85	4.73	4.17	5.61	6.61	6.75	7.25	7.48	7.10	214%	6.56%	-4.99%

* includes emissions from international aviation and international maritime bunkers - there is no internationally agreed allocation mechanism for these and totals here are indicative of the scale of these emissions, not of their national "ownership" ** available yrs.