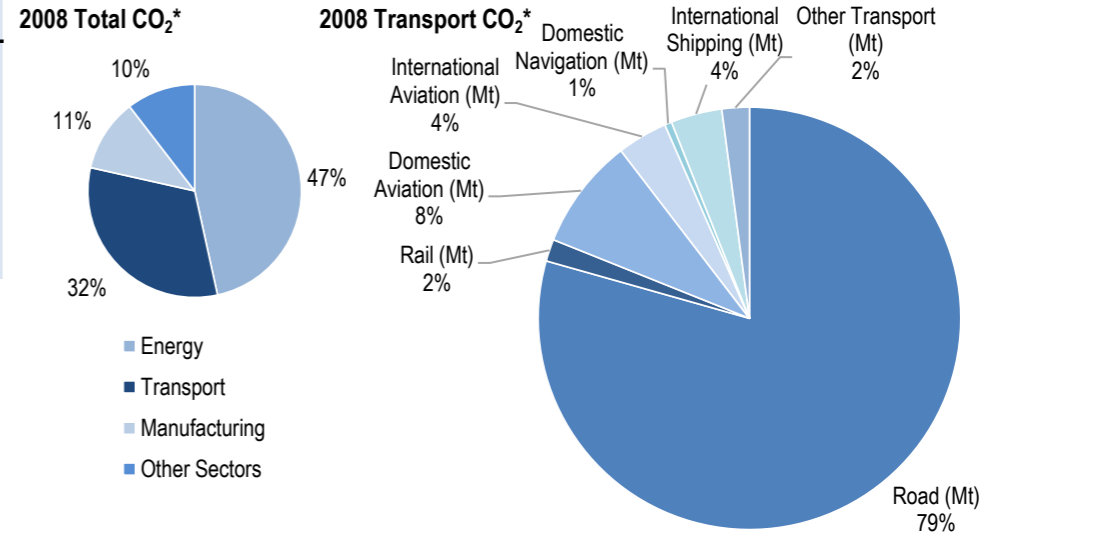
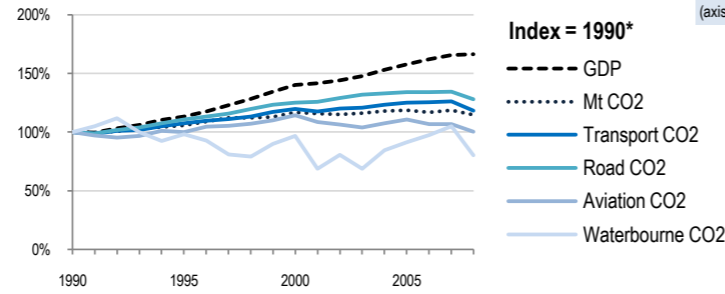
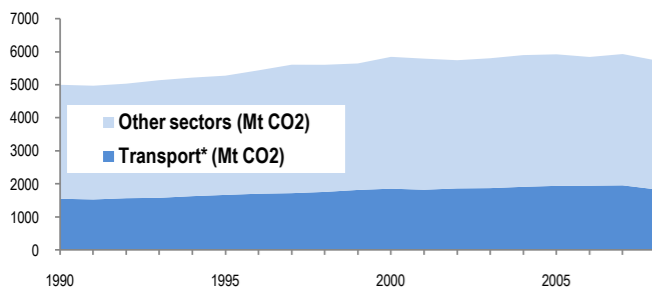


# United States



Change 1990-2008*	Mt (axis set -50%,100%)	2008	T/capita	2008, Kg/\$2000 PPP	2008	2007-2008	(%Mt)
Total CO <sub>2</sub>	15%	5738.37	-6%	18.84	-31%	0.49	-3.2%
Transport CO <sub>2</sub>	18%	1834.01	-3%	6.02	-29%	0.16	-6.2%
Road CO <sub>2</sub>	28%	1455.87	5%	4.78	-23%	0.12	-4.8%
Aviation CO <sub>2</sub>	0%	226.85	-18%	0.74	-40%	0.02	-6.0%
Waterbourne CO <sub>2</sub>	-20%	81.84	-34%	0.27	-52%	0.01	-23.5%



Transport and the Economy	1990	1995	2000	2001	2002	2003	2004	2005	2006	2007	2008	1990-2008	%/year**	% 2007-2008
Population (millions)	250.18	266.59	282.41	285.29	288.06	290.73	293.35	296.04	298.82	301.74	304.53	22%	1.10%	0.92%
GDP PPP (billion 2000 US dollars)	7063.99	8001.95	9898.80	10007.03	10189.89	10444.90	10819.30	11150.37	11448.54	11693.18	11742.29	66%	2.86%	0.42%
Road passenger km (million pkm)	3866914	3899426	4353881	4355726	4450661	4483127	4564468	4582280	4530078	4490847	4351457	13%	0.66%	-3.10%
Road and Rail freight tkm (million tkm)	2748759	3415938	3881751	3954597	4018649	4111590	4298406	4362309	4472100	4507819	4517589	64%	2.80%	0.22%
Road pkm/capita	15457	14627	15417	15268	15450	15420	15560	15479	15160	14883	14289	-8%	-0.44%	-3.99%
Road and Rail freight tkm/\$ gdp	0.39	0.43	0.39	0.40	0.39	0.39	0.40	0.39	0.39	0.39	0.38	-1%	-0.06%	-0.20%
Passenger cars and light trucks per 1000 inhabitants	752	753	782	805	794	793	805	811	813	816	..	..	0.48%	..

CO2 Emissions	1990	1995	2000	2001	2002	2003	2004	2005	2006	2007	2008	1990-2008	%/year**	% 2007-2008
IEA CO <sub>2</sub> from fuel combustion (Mt)*	4998.13	5275.2	5844.16	5790.76	5742.59	5802.23	5898.01	5921.63	5841.64	5929.09	5738.37	15%	0.77%	-3.22%
... of which transport CO <sub>2</sub> (Mt)*	1549.45	1665.97	1854.07	1822.91	1861.96	1871.19	1910.82	1939.84	1944.86	1954.89	1834.01	18%	0.94%	-6.18%
Transport* as a percentage of total	31.0%	31.6%	31.7%	31.5%	32.4%	32.2%	32.4%	32.8%	33.3%	33.0%	32.0%			
Road (Mt)	1137.81	1258.24	1421.4	1432.98	1468.29	1499.81	1514.16	1523.77	1526.76	1528.93	1455.87	28%	1.38%	-4.78%
Rail (Mt)	32.07	32.31	30.53	29.71	30.9	31.04	33.17	37.04	41.25	39.74	30.96	-3%	-0.20%	-22.09%
Domestic Aviation (Mt)	187.51	180.35	201.74	193.99	176.26	173.7	179.84	182.74	173.27	170.89	156.27	-17%	-1.01%	-8.56%
International Aviation (Mt)	38.79	45.96	57.11	51.74	64.53	61.34	63.01	68.21	68.54	70.41	70.58	82%	3.38%	0.24%
Domestic Navigation (Mt)	11.17	9.59	9.77	8.61	9.13	9.42	9.14	11.44	11.11	11.04	9.97	-11%	-0.63%	-9.69%
International Shipping (Mt)	90.68	90.51	88.90	61.37	72.88	60.49	76.78	81.76	88.16	95.96	71.87	-21%	-1.28%	-25.10%
Other Transport (Mt)	51.42	49.01	44.61	44.51	39.95	35.39	34.71	34.88	35.76	37.91	38.49	-25%	-1.60%	1.53%

GHG Emissions	1990	1995	2000	2001	2002	2003	2004	2005	2006	2007	2008	1990-2008	%/year**	% 2007-2008
UNFCCC GHG emissions (Mt CO <sub>2</sub> eq.)*	6224.86	6572.52	7107.72	6995.64	7038.04	7068.80	7191.97	7216.29	7140.53	7248.83	7061.20	13%	0.70%	-2.59%
UNFCCC GHG fuel combustion (Mt CO <sub>2</sub> eq.)*	5045.73	5364.00	5928.43	5840.27	5883.73	5935.85	6050.23	6075.27	5994.41	6087.98	5906.24	17%	0.88%	-2.99%
... of which transport GHG (Mt CO <sub>2</sub> eq.)*	1597.80	1734.17	1935.64	1908.44	1947.34	1938.70	1992.20	2018.02	2018.18	2028.90	1924.31	20%	1.04%	-5.15%
Road (Mt)	1228.46	1349.72	1519.37	1526.76	1561.46	1570.10	1603.49	1610.76	1608.56	1614.02	1536.71	25%	1.25%	-4.79%
International Aviation (Mt)	46.97	51.83	59.44	59.95	65.13	57.30	62.62	58.13	76.09	73.99	77.86	66%	2.85%	5.23%
International Shipping (Mt)	66.08	49.07	40.09	37.72	40.21	43.54	52.67	53.54	54.37	54.39	58.78	-11%	-0.65%	8.06%

\* includes emissions from international aviation and international maritime bunkers - there is no internationally agreed allocation mechanism for these and totals here are indicative of the scale of these emissions, not of their national "ownership" \*\* available yrs.