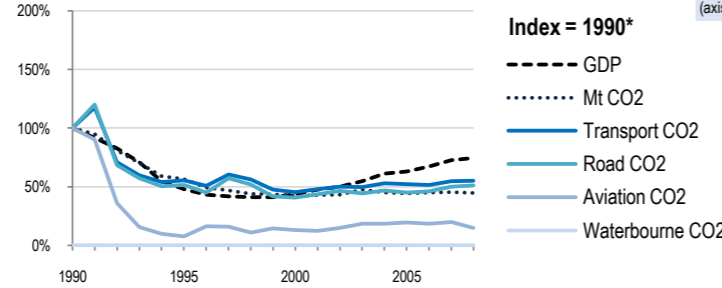
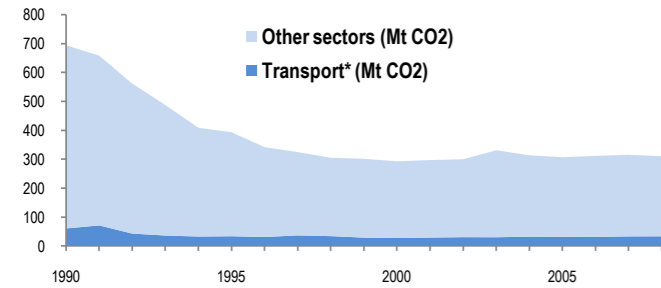


Ukraine

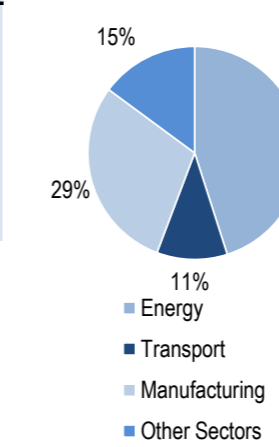
EU-27 N. America Asia-Pacific Other ITF or OECD **310.4 Mt** Top 10 non-ITF

Change 1990-2008*

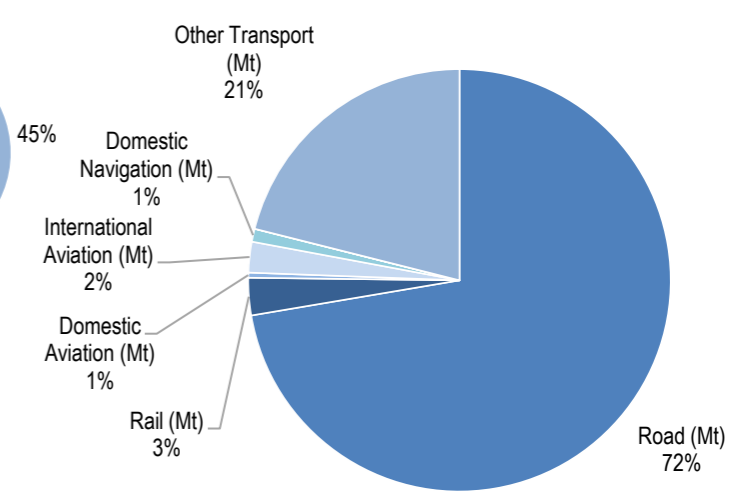
	Mt (axis set -50%,100%)	2008	T/capita	2008, Kg/\$2000 PPP	2008	2007-2008	(%Mt)
Total CO ₂	-55%	310.36	-50%	6.71	-40%	0.91	-1.6%
Transport CO ₂	-45%	33.21	-38%	0.72	-26%	0.10	0.5%
Road CO ₂	-49%	24.03	-43%	0.52	-31%	0.07	2.0%
Aviation CO ₂	-85%	0.91	-83%	0.02	-80%	0.00	-24.8%
Waterbourne CO ₂		0.33		0.01		0.00	-21.4%



2008 Total CO₂*



2008 Transport CO₂*



Transport and the Economy	1990	1995	2000	2001	2002	2003	2004	2005	2006	2007	2008	1990-2008	%/year**	% 2007-2008
Population (millions)	51.89	51.51	49.18	48.68	48.20	47.81	47.45	47.11	46.79	46.51	46.26	-11%	-0.64%	-0.54%
GDP PPP (billion 2000 US dollars)	456.90	219.32	198.51	216.77	228.05	249.48	279.67	287.22	308.19	332.53	339.52	-26%	-1.64%	2.10%
Road passenger km (million pkm)	90323	34789	28917	30423	79283	39495	46841	51820	53343	55446	55446	-39%	-2.67%	0.00%
Road and Rail freight tkm (million tkm)	488747	199329	175330	180453	197227	230621	241968	233160	252147	276788	275175	-44%	-3.14%	-0.58%
Road pkm/capita	1741	675	588	625	1645	826	987	1100	1140	1192	1199	-31%	-2.05%	0.54%
Road and Rail freight tkm/\$ gdp	1.07	0.91	0.88	0.83	0.86	0.92	0.87	0.81	0.82	0.83	0.81	-24%	-1.53%	-2.63%
Passenger cars per 1000 inhabitants	63	87	107	109	112	116	115	118	..	128	4.26%	..
CO2 Emissions														
IEA CO ₂ from fuel combustion (Mt)*	693.97	393.25	292.74	297.09	299.84	330.87	313.41	306.78	311.45	315.25	310.36	-55%	-4.37%	-1.55%
... of which transport CO ₂ (Mt)*	60.41	33.49	27.46	28.95	30.32	30.01	32	31.43	31.06	33.03	33.21	-45%	-3.27%	0.54%
Transport* as a percentage of total	8.7%	8.5%	9.4%	9.7%	10.1%	9.1%	10.2%	10.2%	10.0%	10.5%	10.7%			
Road (Mt)	46.95	24.15	19.12	20.49	21.79	20.77	21.94	21.15	21.67	23.56	24.03	-49%	-3.65%	1.99%
Rail (Mt)	2.42	1.12	0.77	0.72	0.8	0.86	1.15	1.07	0.95	1.01	0.95	-61%	-5.06%	-5.94%
Domestic Aviation (Mt)	0	0.01	0.01	0.01	0.02	0.02	0.02	0.09	0.13	0.15	0.13	..	21.81%	-13.33%
International Aviation (Mt)	6.11	0.47	0.78	0.74	0.89	1.1	1.11	1.11	0.99	1.06	0.78	-87%	-10.81%	-26.42%
Domestic Navigation (Mt)	0	0	0	0	0	0	0	0.41	0.44	0.42	0.33	-21.43%
International Shipping (Mt)	0	0	0	0	0	0	0	0	0	0	0
Other Transport (Mt)	4.93	7.74	6.78	6.99	6.83	7.26	7.78	7.59	6.88	6.85	7	42%	1.97%	2.19%
GHG Emissions														
UNFCCC GHG emissions (Mt CO ₂ eq.)*	933.68	525.76	393.67	391.97	400.56	416.55	416.14	423.69	441.17	441.45	428.85	-54%	-4.23%	-2.85%
UNFCCC GHG fuel combustion (Mt CO ₂ eq.)*	604.63	334.80	219.05	220.99	224.16	237.45	233.81	242.77	252.43	247.75	241.66	-60%	-4.97%	-2.46%
... of which transport GHG (Mt CO ₂ eq.)*	93.61	0.76	35.08	35.71	38.64	38.84	41.57	43.55	44.72	45.48	45.37	-52%	-3.94%	-0.25%
Road (Mt)	46.68	0.00	16.42	18.20	21.51	21.67	24.09	26.35	28.12	30.31	29.77	-36%	-2.47%	-1.80%
International Aviation (Mt)	2.41	0.76	0.37	0.37	0.41	0.48	0.59	0.65	0.76	0.87	0.95	-61%	-5.05%	9.28%
International Shipping (Mt)	3.54	0.00	0.34	0.37	0.22	0.15	0.19	0.21	0.21	0.14	0.11	-97%	-17.58%	-22.32%

* includes emissions from international aviation and international maritime bunkers - there is no internationally agreed allocation mechanism for these and totals here are indicative of the scale of these emissions, not of their national "ownership" ** available yrs.