

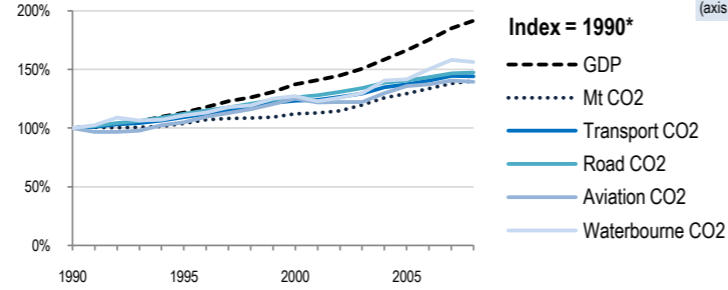
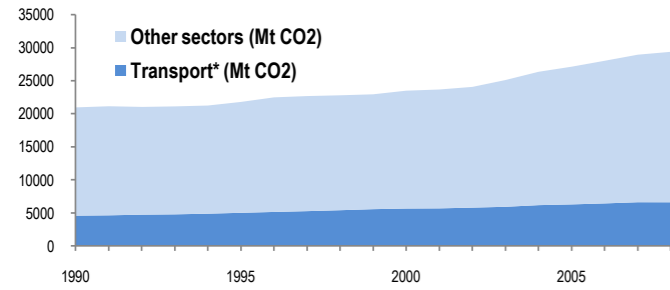
# World

## Change 1990-2008\*

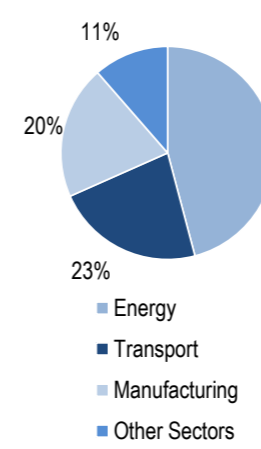
	Mt (axis set -50%,100%)	2008
Total CO <sub>2</sub>	40%	29381.43
Transport CO <sub>2</sub>	44%	6604.66
Road CO <sub>2</sub>	48%	4848.42
Aviation CO <sub>2</sub>	40%	752.19
Waterborne CO <sub>2</sub>	56%	706.59

## T/capita

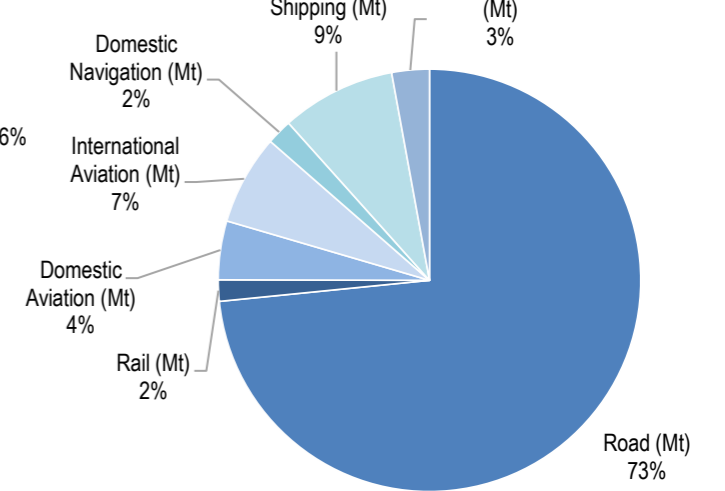
	2008, Kg/\$2000 PPP	2008	2007-2008	(%Mt)
Total CO <sub>2</sub>	4.39	-27%	0.46	1.5%
Transport CO <sub>2</sub>	0.99	-25%	0.10	-0.2%
Road CO <sub>2</sub>	0.72	-23%	0.08	0.5%
Aviation CO <sub>2</sub>	0.11	-27%	0.01	-0.7%
Waterborne CO <sub>2</sub>	0.11	-18%	0.01	-1.2%



## 2008 Total CO<sub>2</sub>\*



## 2008 Transport CO<sub>2</sub>\*



Transport and the Economy	1990	1995	2000	2001	2002	2003	2004	2005	2006	2007	2008	1990-2008	%/year**	% 2007-2008
Population (millions)	5265.24	5680.36	6074.01	6151.12	6228.16	6305.60	6382.47	6458.61	6534.54	6610.49	6687.90	27%	1.34%	1.17%
GDP PPP (billion 2000 US dollars)	33357.02	37829.97	45761.07	46939.80	48348.85	50266.50	52884.33	55438.13	58465.75	61747.93	63865.84	91%	3.67%	3.43%
<b>CO2 Emissions</b>														
IEA CO <sub>2</sub> from fuel combustion (Mt)*	20964.85	21793.68	23496.55	23674.57	24069.94	25110.5	26357.32	27129.14	28023.96	28945.33	29381.43	40%	1.89%	1.51%
... of which transport CO <sub>2</sub> (Mt)*	4583.67	5014.53	5659.04	5684.06	5797.84	5922.84	6172.89	6285.03	6434.74	6614.87	6604.66	44%	2.05%	-0.15%
Transport* as a percentage of total	21.9%	23.0%	24.1%	24.0%	24.1%	23.6%	23.4%	23.2%	23.0%	22.9%	22.5%			
Road (Mt)	3286.73	3680.66	4143.25	4208.74	4305.86	4402.69	4553.77	4614.72	4708.4	4824.29	4848.42	48%	2.18%	0.50%
Rail (Mt)	146.66	110.75	117.27	114.25	116.91	123.07	115.04	123.38	128.6	130.61	107.65	-27%	-1.70%	-17.58%
Domestic Aviation (Mt)	280.81	278.39	320.27	309.69	292.69	291.3	306.67	310.95	304.75	310.85	297.34	6%	0.32%	-4.35%
International Aviation (Mt)	258.22	287.81	354.42	347.13	365.61	366.79	393.4	421.57	436.25	446.59	454.85	76%	3.20%	1.85%
Domestic Navigation (Mt)	97.68	92.75	107.49	108.75	107.46	116.69	112.77	118.84	122.58	126.36	128.39	31%	1.53%	1.61%
International Shipping (Mt)	354.77	408.72	468.61	446.70	462.25	470.45	523.39	522.28	556.62	589.09	578.20	63%	2.75%	-1.85%
Other Transport (Mt)	158.79	155.45	147.73	148.82	147.06	151.86	167.83	173.29	177.53	187.08	189.81	20%	1.00%	1.46%
<b>GHG Emissions</b>														
UNFCCC GHG emissions (Mt CO <sub>2</sub> eq.)*	..	..	..	..	..	..	..	..	..	..	..	..	..	..
UNFCCC GHG fuel combustion (Mt CO <sub>2</sub> eq.)*	..	..	..	..	..	..	..	..	..	..	..	..	..	..
... of which transport GHG (Mt CO <sub>2</sub> eq.)*	..	..	..	..	..	..	..	..	..	..	..	..	..	..
Road (Mt)	..	..	..	..	..	..	..	..	..	..	..	..	..	..
International Aviation (Mt)	..	..	..	..	..	..	..	..	..	..	..	..	..	..
International Shipping (Mt)	..	..	..	..	..	..	..	..	..	..	..	..	..	..

\* includes emissions from international aviation and international maritime bunkers - there is no internationally agreed allocation mechanism for these and totals here are indicative of the scale of these emissions, not of their national "ownership" \*\* available yrs.