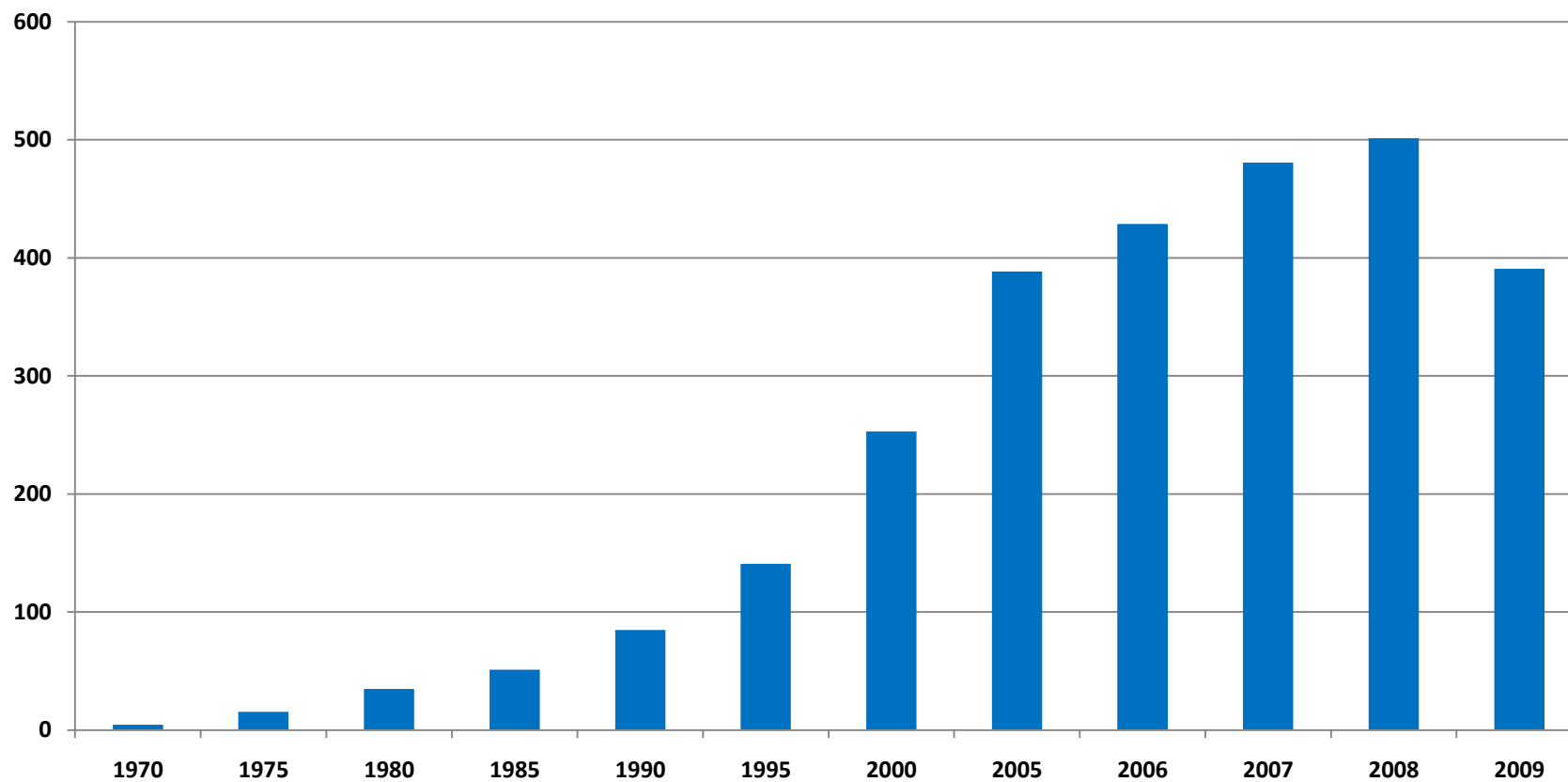
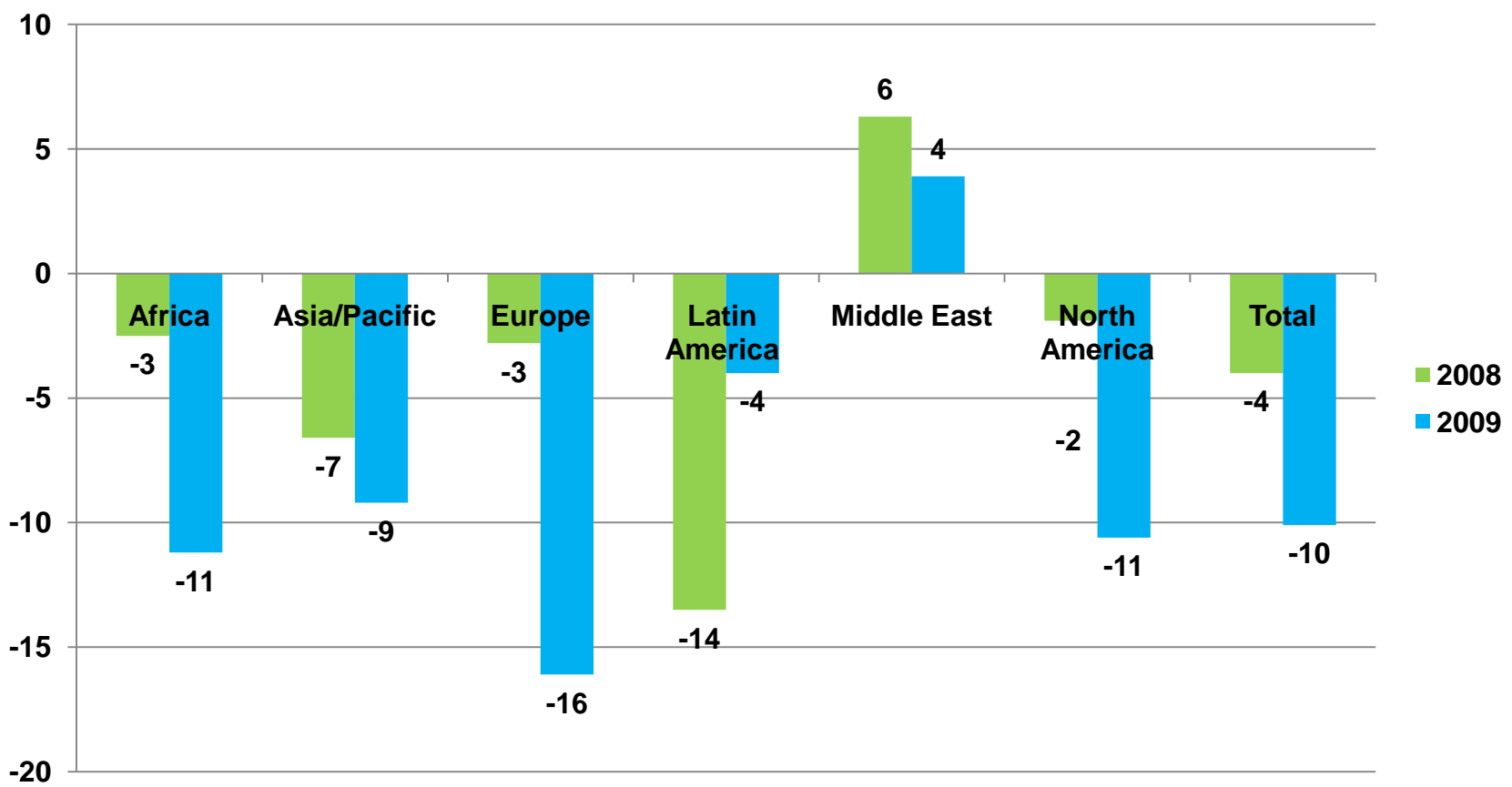


World container traffic (Million TEUs)



Source: [Containerization International](#)

International air freight 2009 (Freight tonne-kilometres, % change)

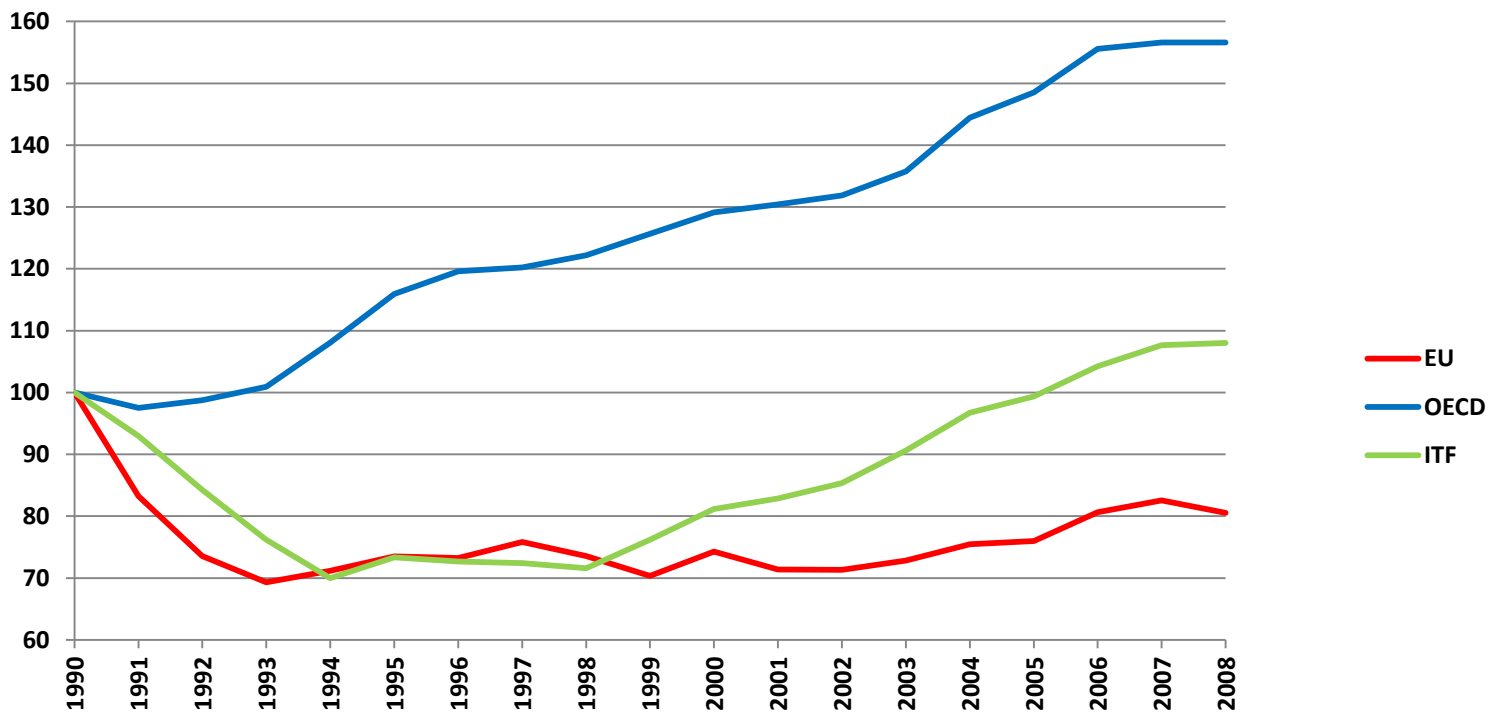


The 10 leading world ports in terms of container traffic
(*Thousand of TEU*)

World ranking	Port	2009	Δ% 09/08	2008	Δ% 08/07
1	Singapore	25 866	-13.5	29 918	7.1
2	Shanghai	25 002	-10.6	27 980	7
3	Hong Kong	20 983	-14.3	24 494	2.1
4	Shenzhen	18 250	-14.8	21 414	1.5
5	Busan	11 955	-11.1	13 453	1.4
6	Guangzhou	11 190	1.7	11 001	19.6
7	Dubai	11 124	-5.9	11 827	11
8	Ningbo	10 503	-6.4	11 226	19.9
9	Qingdao	10 260	-0.6	10 320	9.1
10	Rotterdam	9 743	-9.8	10 800	0.1

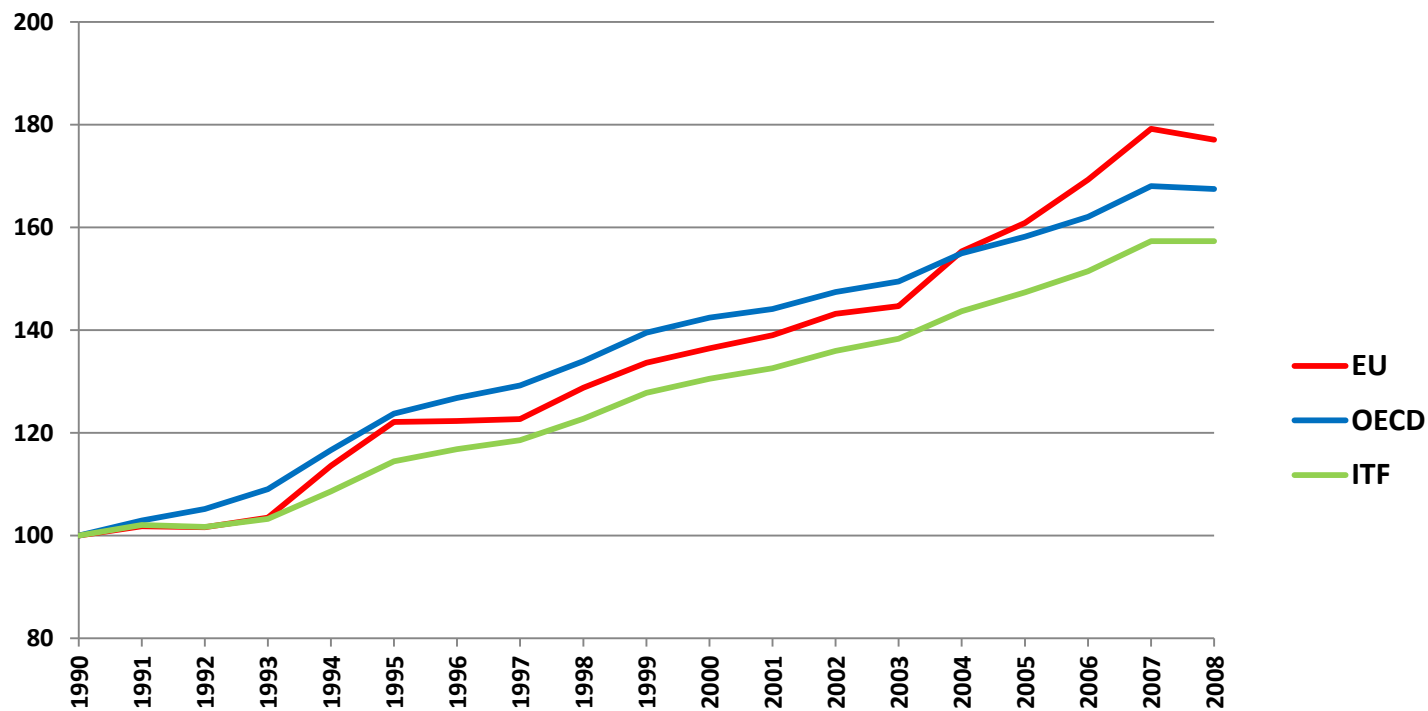
Source: [Containerization International](#)

Goods Transport by Rail (1990=100)



Source: [ITF Trends in the Transport Sector](#)

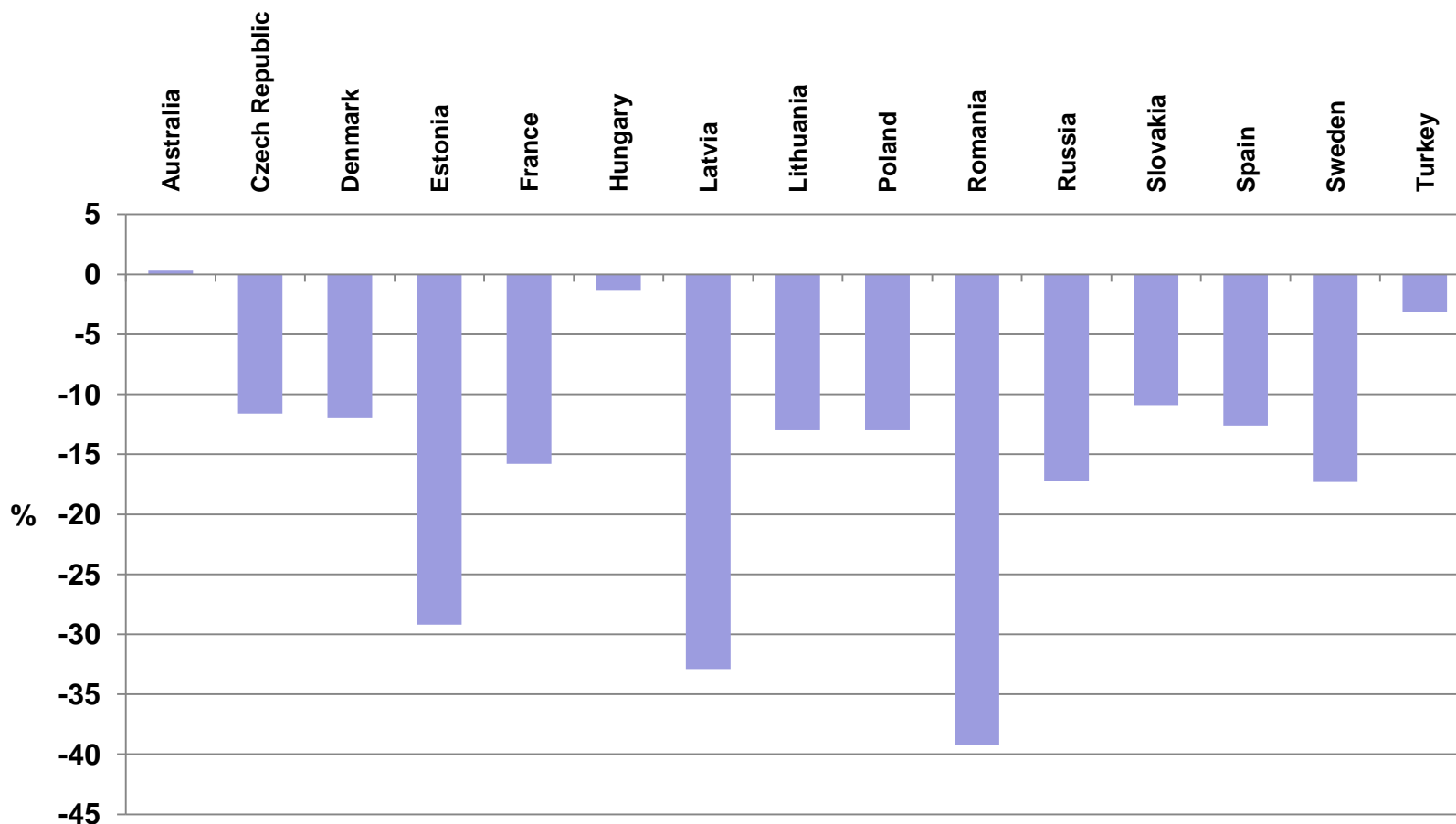
Goods Transport by Road (1990=100)



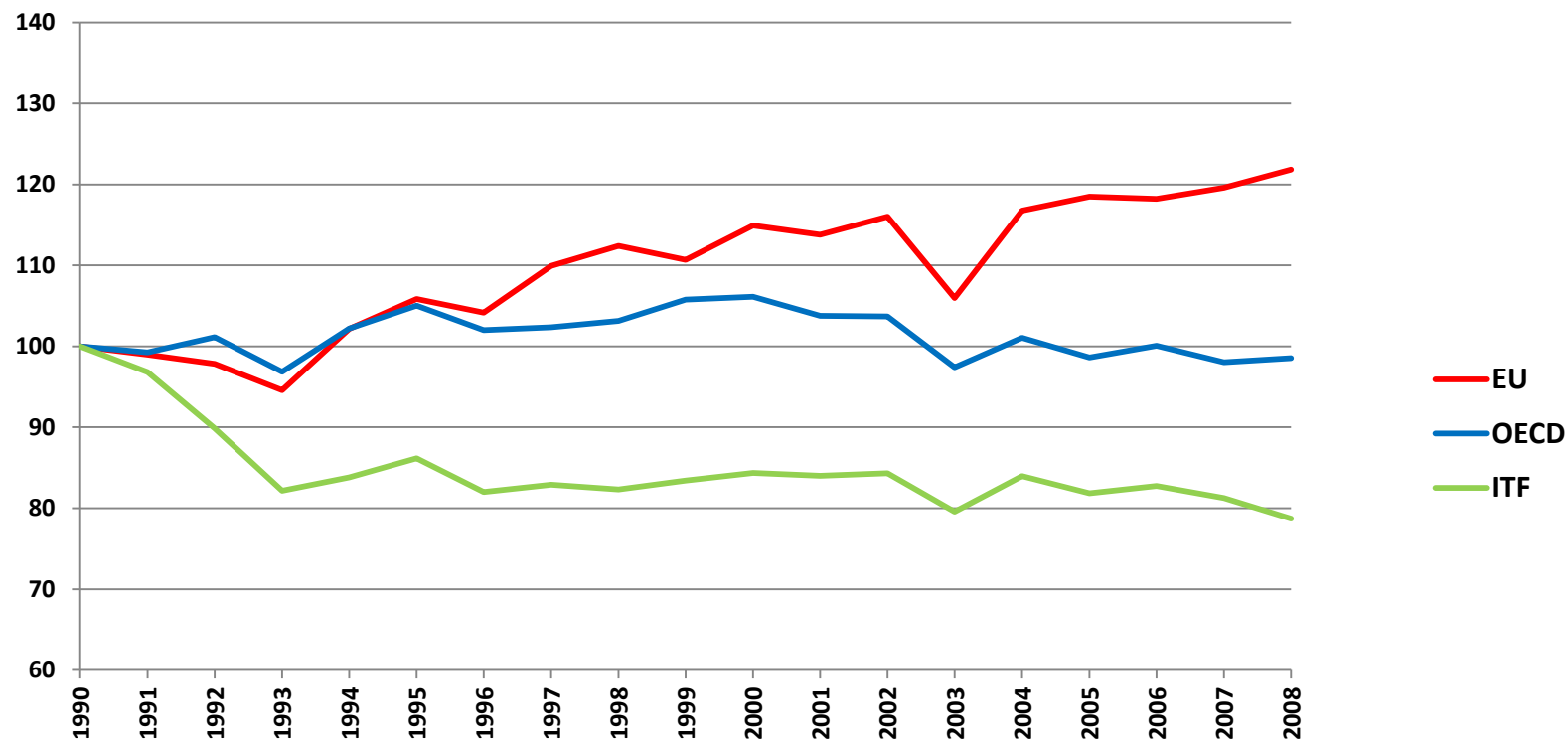
Source: [ITF Trends in the Transport Sector](#)

Road freight down across the countries 2009

(Freight ton-km, % change)



Goods Transport by Inland Waterways (1990=100)



Source: [ITF Trends in the Transport Sector](#)