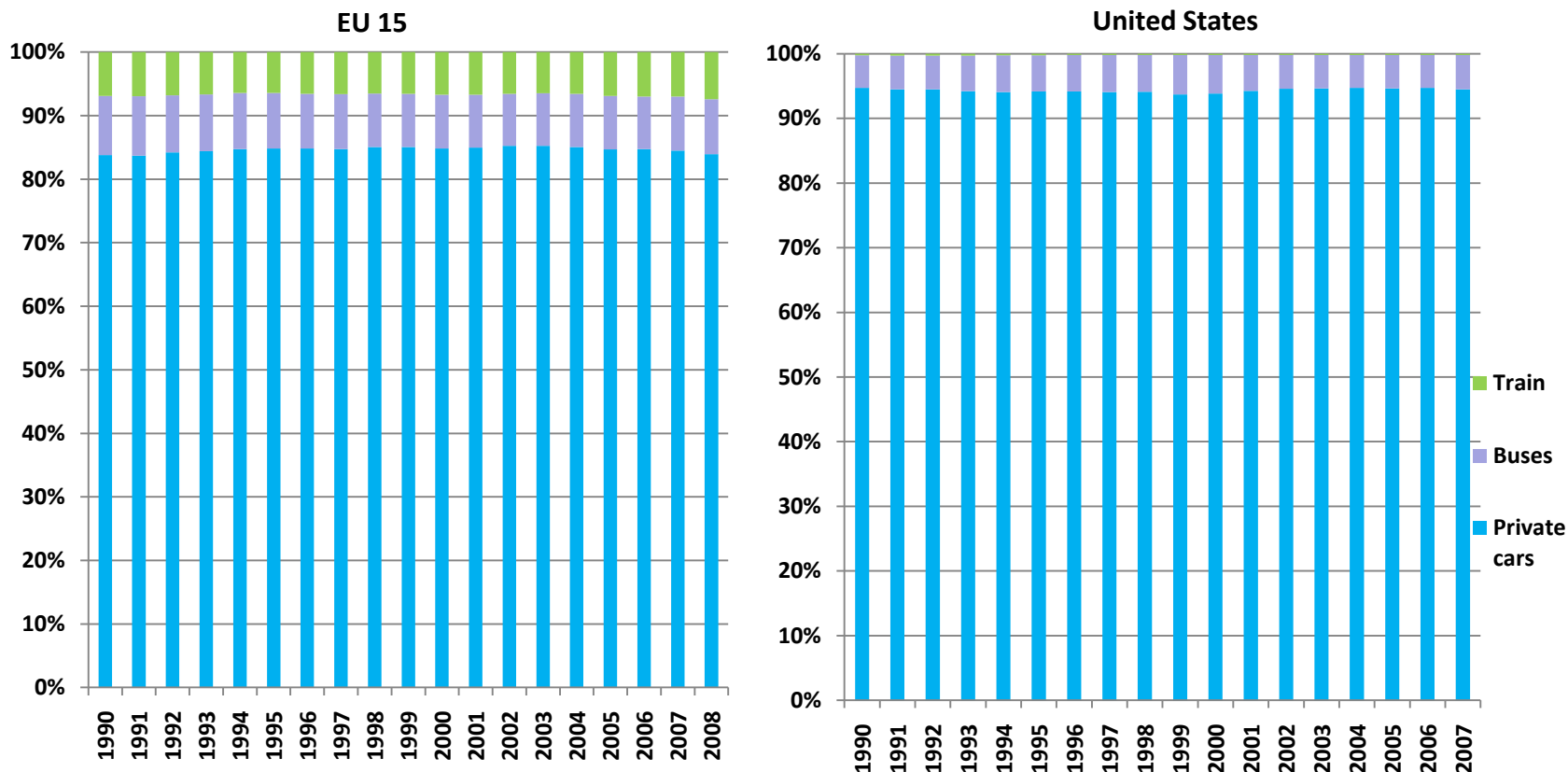
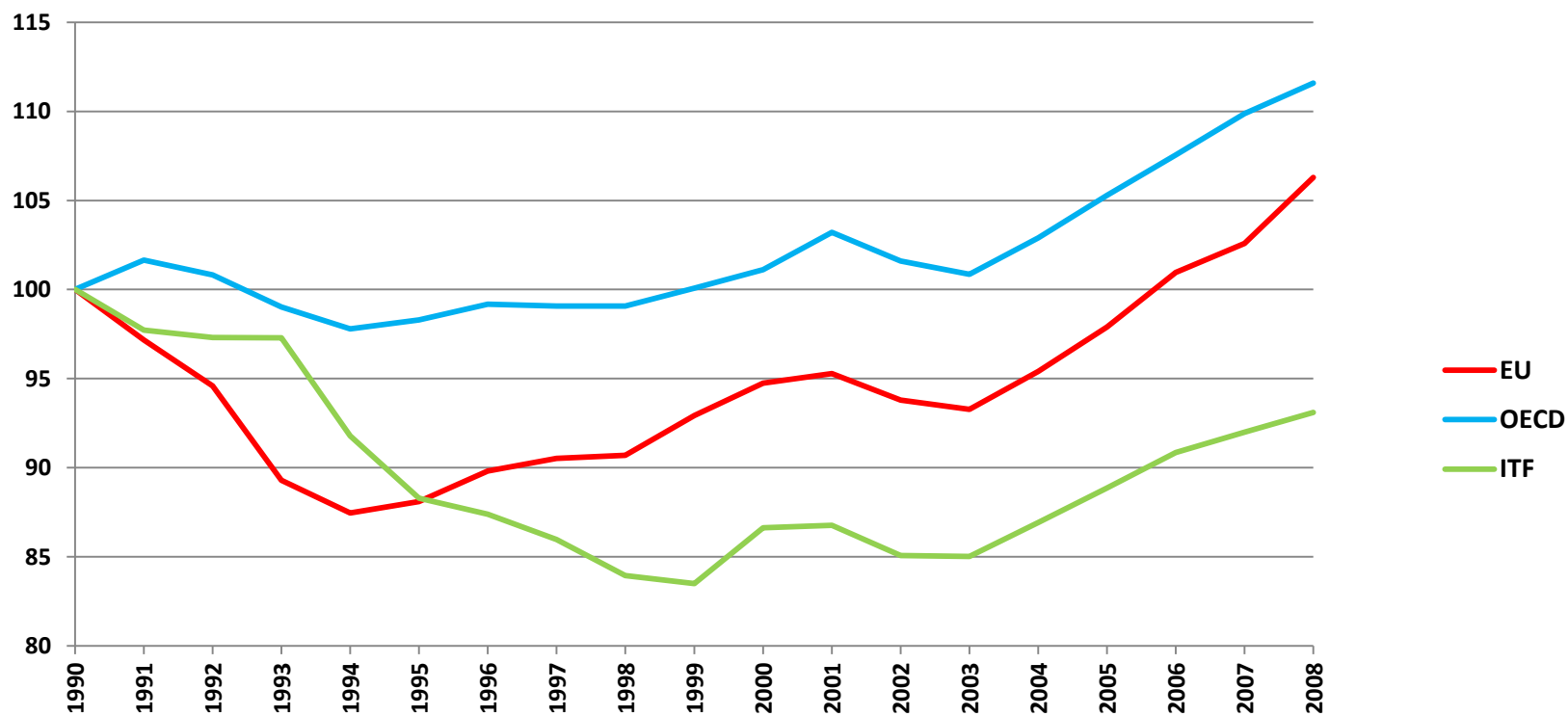


Modal split of inland passenger-km has remained constant over time in the EU and the United States



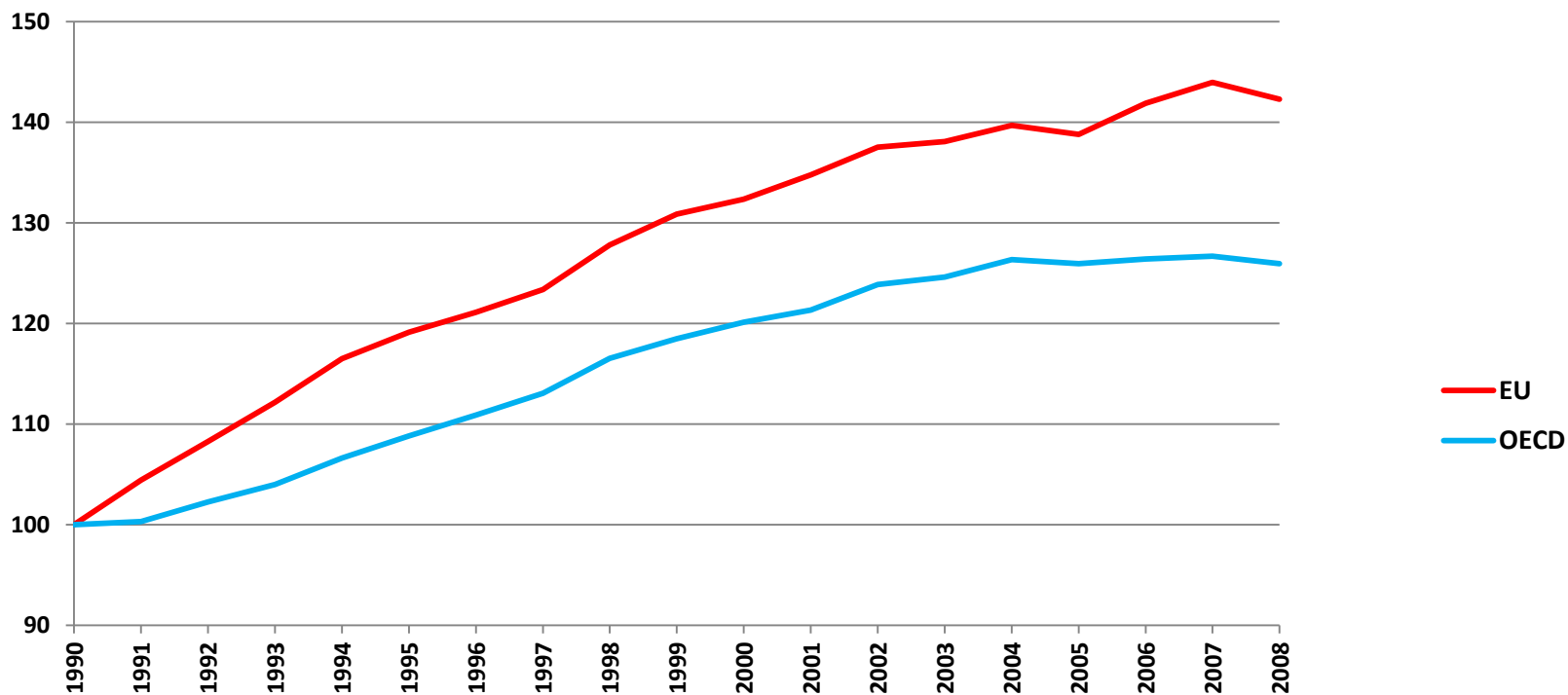
Source: [ITF](#). EU15 excludes Austria, Ireland and Luxembourg

Passenger Transport by Rail (1990=100)



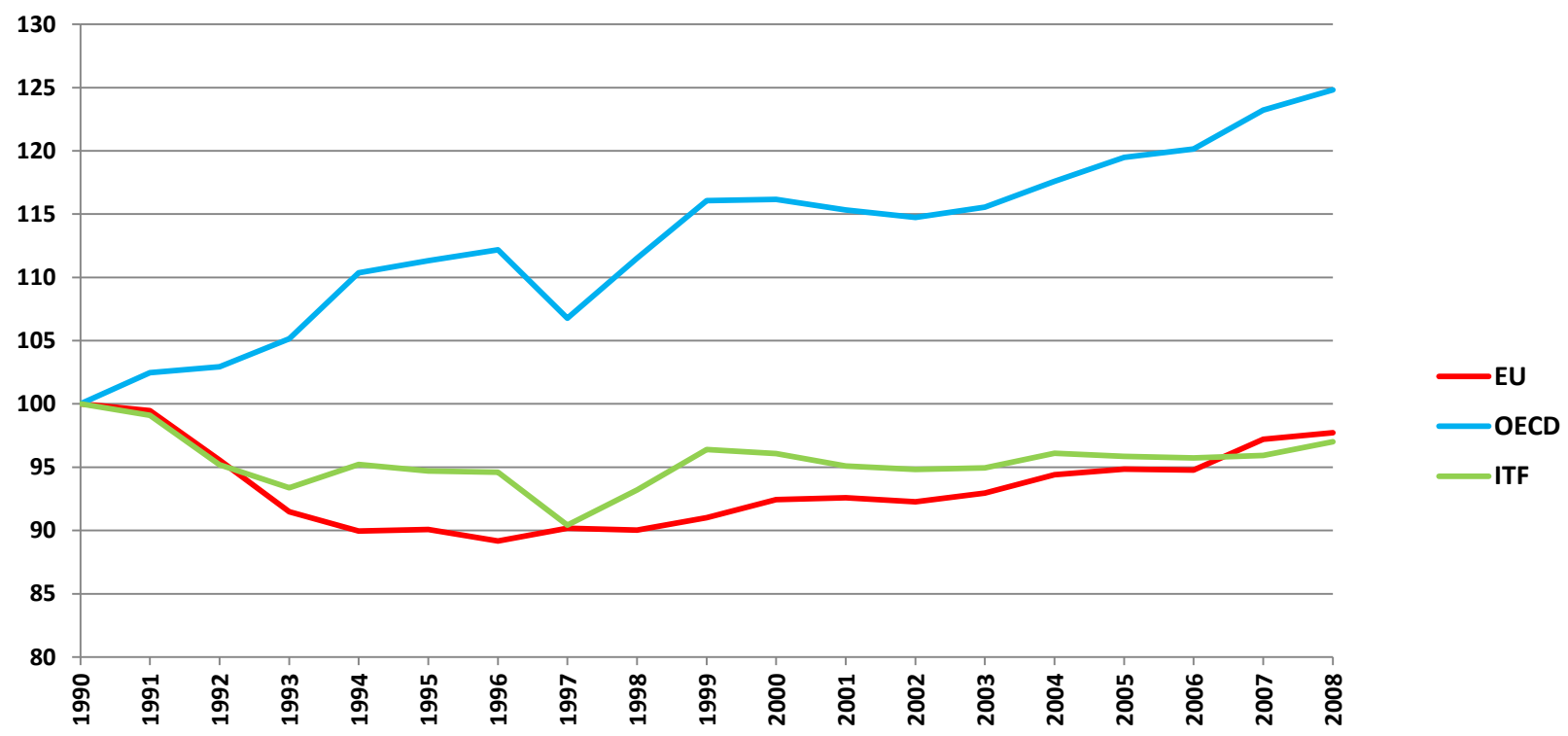
Source: [ITF Trends in the Transport Sector](#)

Passenger Transport by Private Cars (1990=100)

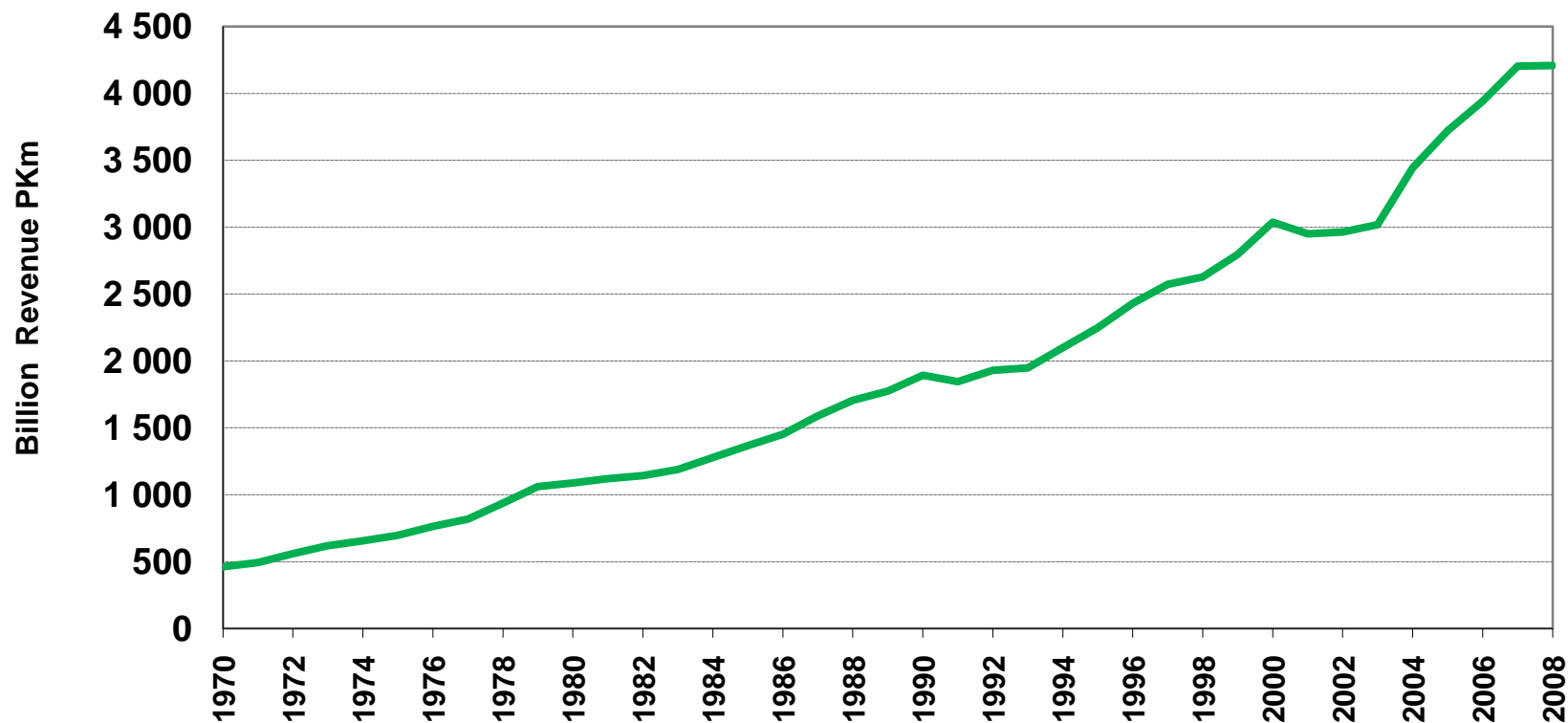


Source: [ITF Trends in the Transport Sector](#)

Passenger Transport by Bus and Coach (1990=100)



World air passenger-km has grown nine-fold since 1970



Source [ICAO](#) and [IATA](#)