

Transport Sector in Brazil

Carlos Feu Alvim – Economy & Energy – e&e

**New Energy Indicators for Transport:
The Way Forward**
Paris - January 28 and 29, 2008

Transport Sector and GHG Emissions in Brazil

- Transport Sector and GHG Emissions
 - New Cars Sales by Mode
 - Energy Prices and Vehicles Market
 - New Car Sales by Fuel
 - Vehicle Fleet by Mode and Fuel
 - Use of Natural Gas and Biodiesel
 - GHG Emissions in Transport
 - Motorcycles Sales and Fleet
-



Transport Sector and GHG Emissions in Brazil

- Transport Sector and GHG Emissions
 - New Cars Sales by Mode
 - Energy Prices and Vehicles Market
 - New Car Sales by Fuel
 - Vehicle Fleet by Mode and Fuel
 - Use of Natural Gas and Biodiesel
 - GHG Emissions in Transport
 - Motorcycles Sales and Fleet
-



Transport Sector in Brazil :

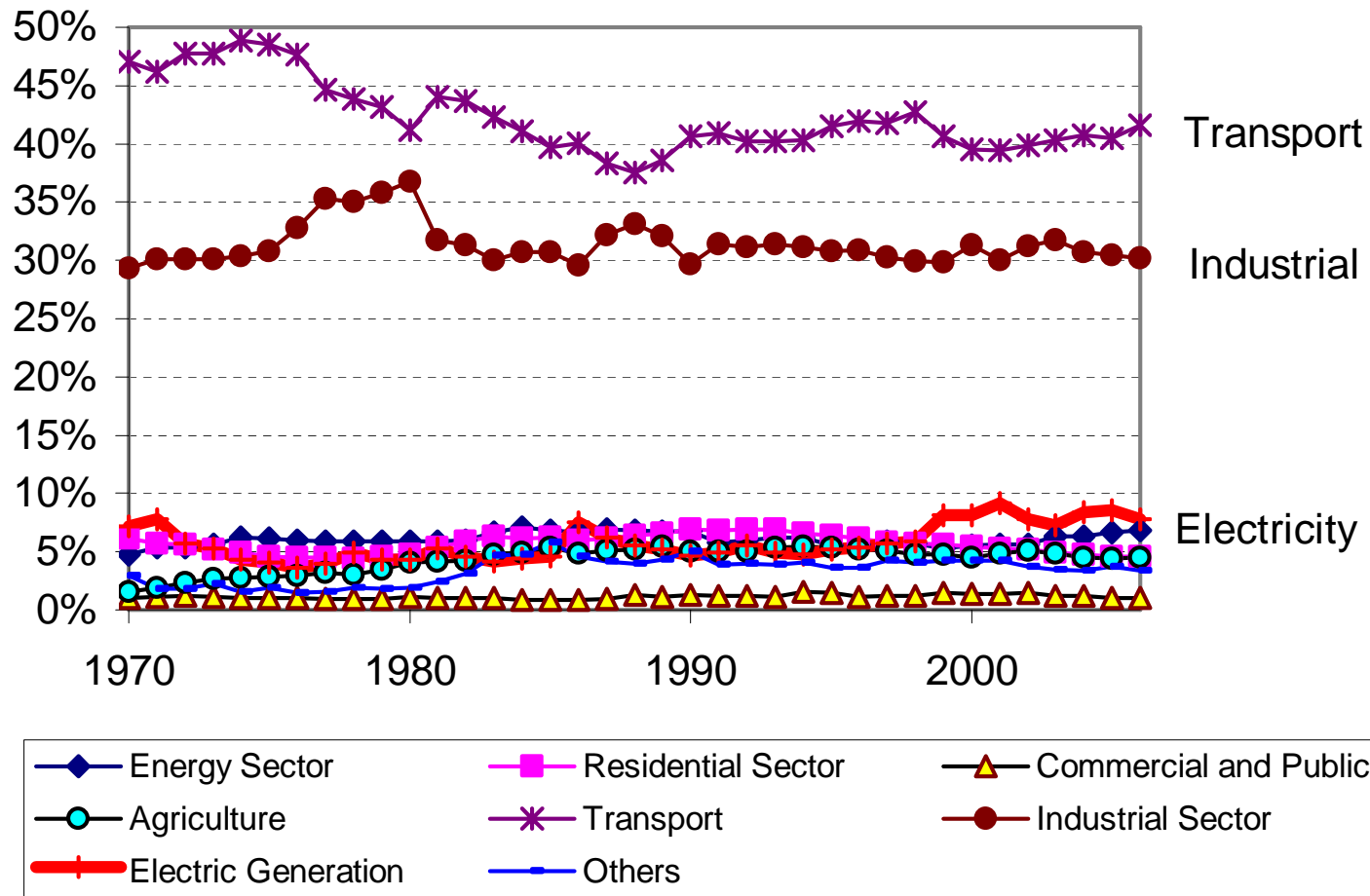
Transport in Brazil and GHG Emissions

- Transport is responsible for 24% of global GHG emissions from fossil fuels
- Transport accounts for 42% of carbon emissions from energy use
- In 1994 only 23% of CO₂ emissions were due to energy activities according to the first Brazilian GHG Inventory
- Emissions due to fossil energy use is not yet predominant in Brazil but its share is increasing



Transport Sector in Brazil

GHG Emissions from Energy Uses



Transport Sector and GHG Emissions in Brazil

- Transport Sector and GHG Emissions
 - **New Cars Sales by Mode**
 - Energy Prices and Vehicles Market
 - New Car Sales by Fuel
 - Vehicle Fleet by Mode and Fuel
 - Use of Natural Gas and Biodiesel
 - GHG Emissions in Transport
 - Motorcycles Sales and Fleet
-



Transport Sector in Brazil :

New Vehicles Market by Mode – 2007

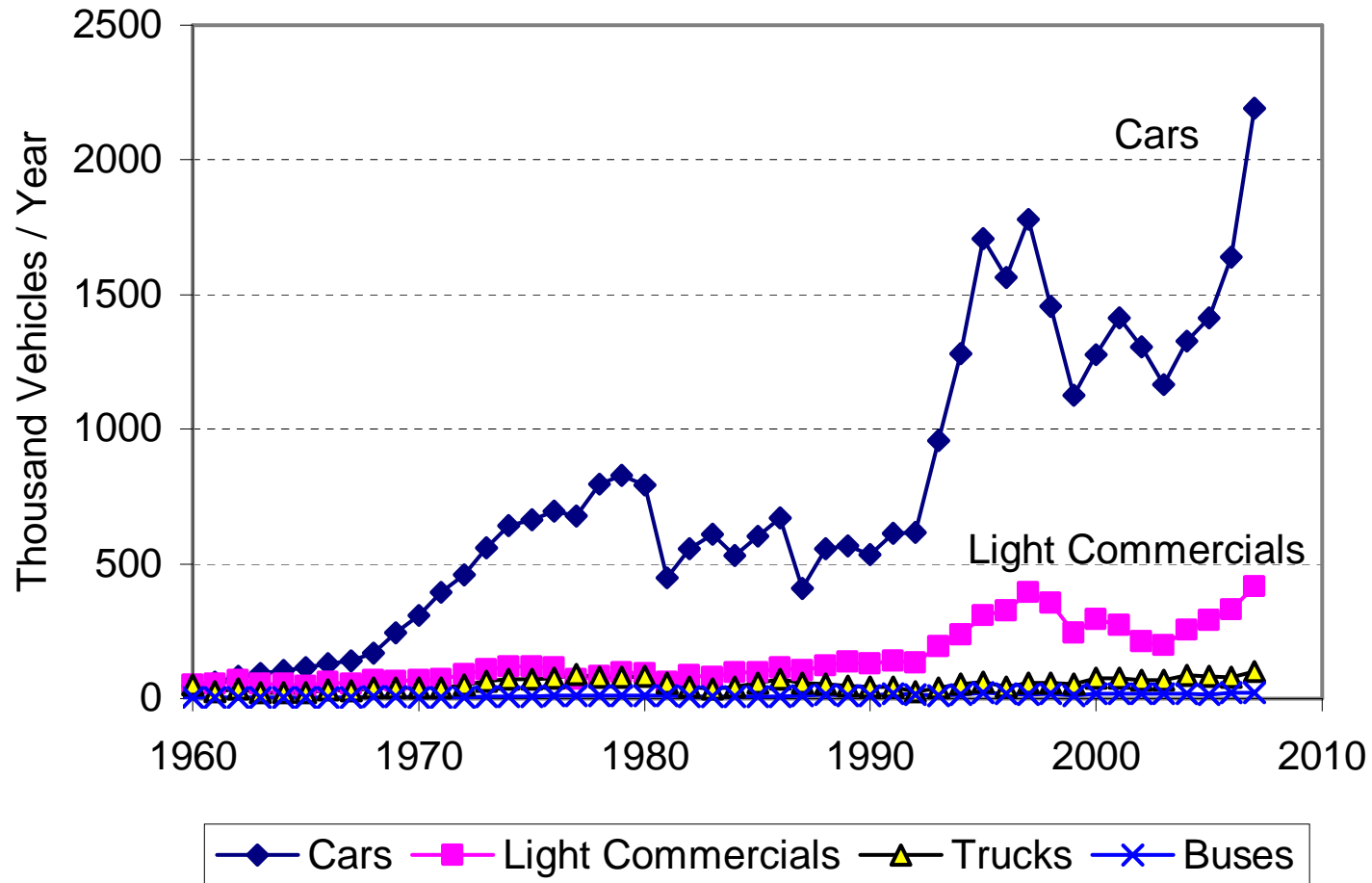
Thousand Vehicles/Year

	Produced	Exported	Imported Registered	National Registered	Stock Changes
Passenger cars	2389	586	176	1799	180
Light commercials	408	144	88	277	75
Trucks	137	41	3.3	95	4
Buses	39	15	0.046	23	1
Total	2973	787	268	2195	259



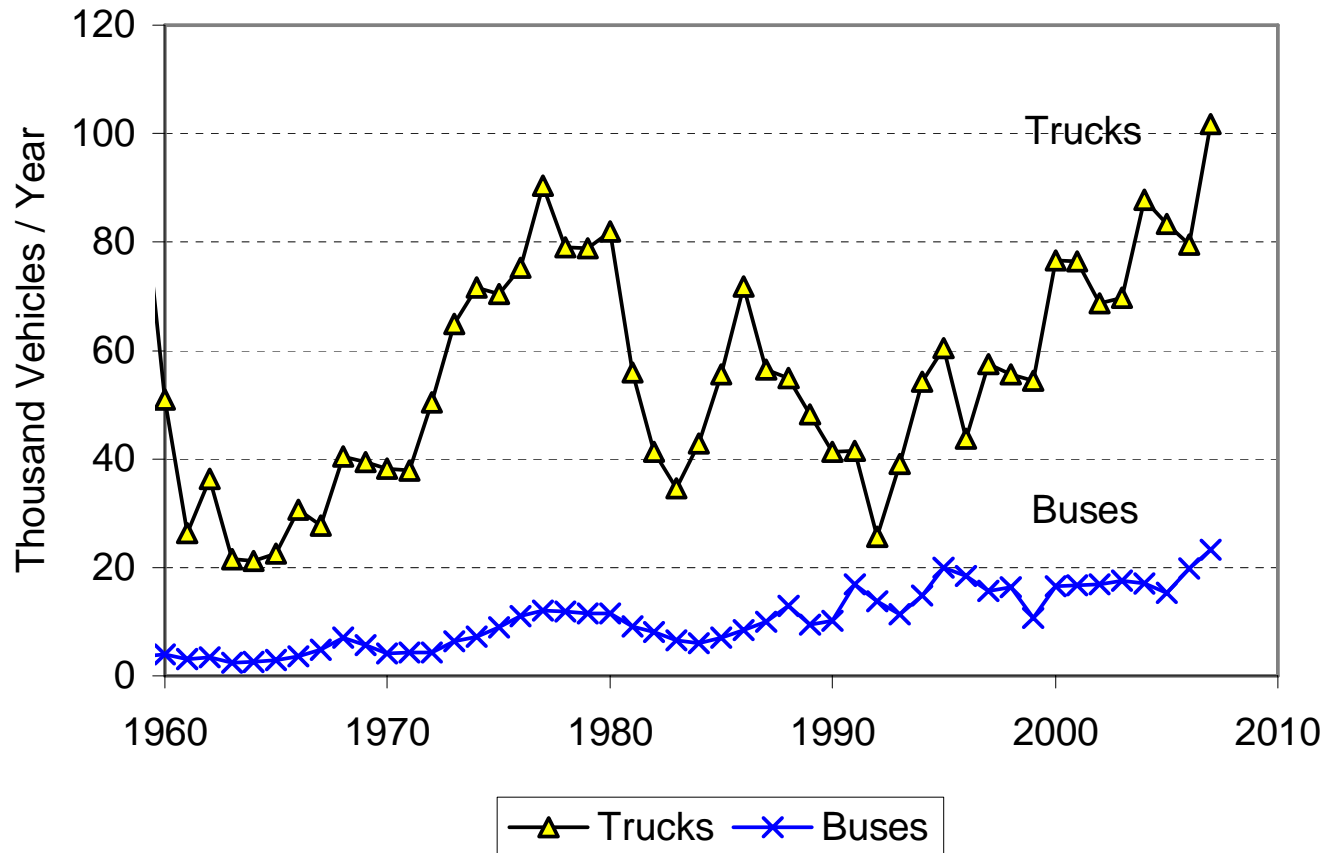
Transport Sector in Brazil

Sales (New Car Registration) by Mode



Transport Sector in Brazil

New Car Registration – Heavy Vehicles



Transport Sector in Brazil :

Share 1000 cc Engines in Registration of New Cars – Year 2007

Thousand Vehicles/Year

TOTAL		2973
Light vehicles		2797
Passenger cars		2389
Light commercials	GVW < 3.5 ton	408
Trucks		137
Semi-light	GVW > 3.5 t < 6 t	6
Light	GVW > 6 t < 10 t	27
Medium	GVW > 10 t < 15 t	14
Semi-heavy	GVW > 15 t	43
Heavy	GVW > 15 t	47
	GCW > 45 t	0
Buses(Chassis)		39
Coach		7
City bus		31

GVW (gross vehicle weight)

GCW (Gross Combined Weight)

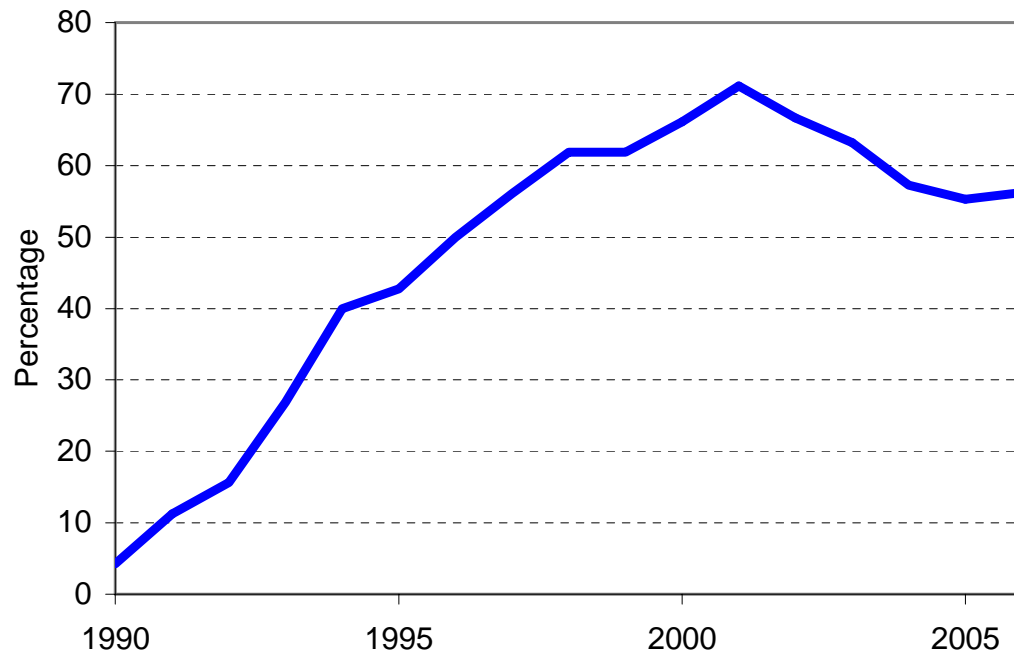


Transport Sector in Brazil :

Share 1000 cc Engines in Registration of New Cars – Year 2007

and 1000 cc Share in Sales

Share 1000 cc Engines in Registration of New Cars



Thousand Vehicles/Year

Car Sales in 2007		
1000 cc	1067	54%
<1000 cc >= 2000 cc	882	45%
>2000 cc	27	1%

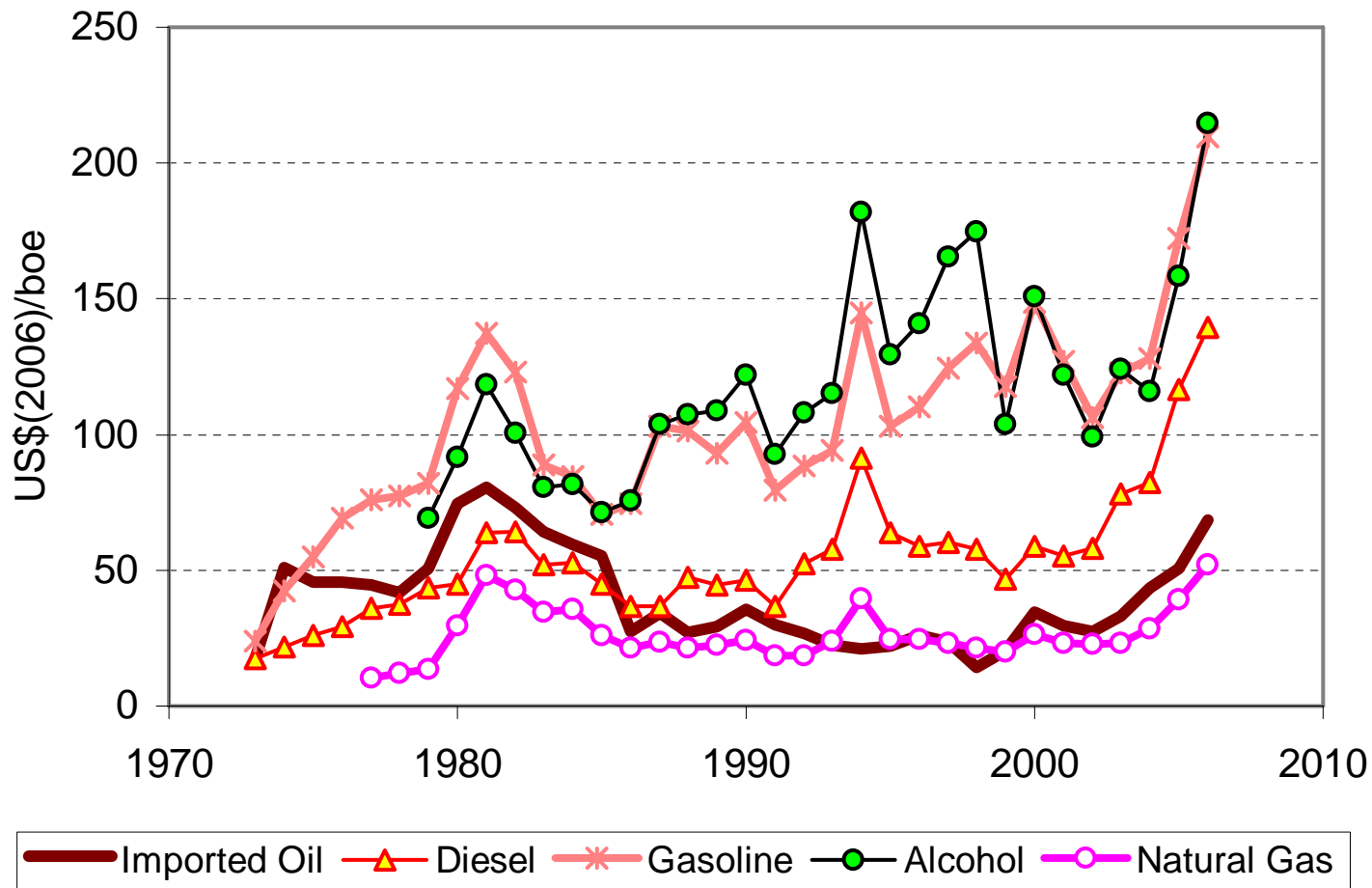


Transport Sector and GHG Emissions in Brazil

- Transport Sector and GHG Emissions
- New Cars Sales by Mode
- **Energy Prices and Vehicles Market**
- New Car Sales by Fuel
- Vehicle Fleet by Mode and Fuel
- Use of Natural Gas and Biodiesel
- GHG Emissions in Transport
- Motorcycles Sales and Fleet



Transport Sector in Brazil : Domestic Fuel Prices



Transport Sector in Brazil :

Changes Affecting Fuel Consumption and Vehicles Carbon Emissions

- After First Oil Price Shock (1973)
 - Change in domestic relative price gasoline/diesel
 - Anhydrous alcohol in gasoline mixture
- After Second Oil Price Shock (1979)
 - Pure Alcohol Vehicles
 - Sale of Pure Alcohol Vehicles almost zero
- After Third Oil Price Shock and GHG Increased Concerns
 - Flex Fuel (gasoline/alcohol)
 - Compressed Natural Gas
 - Biodiesel

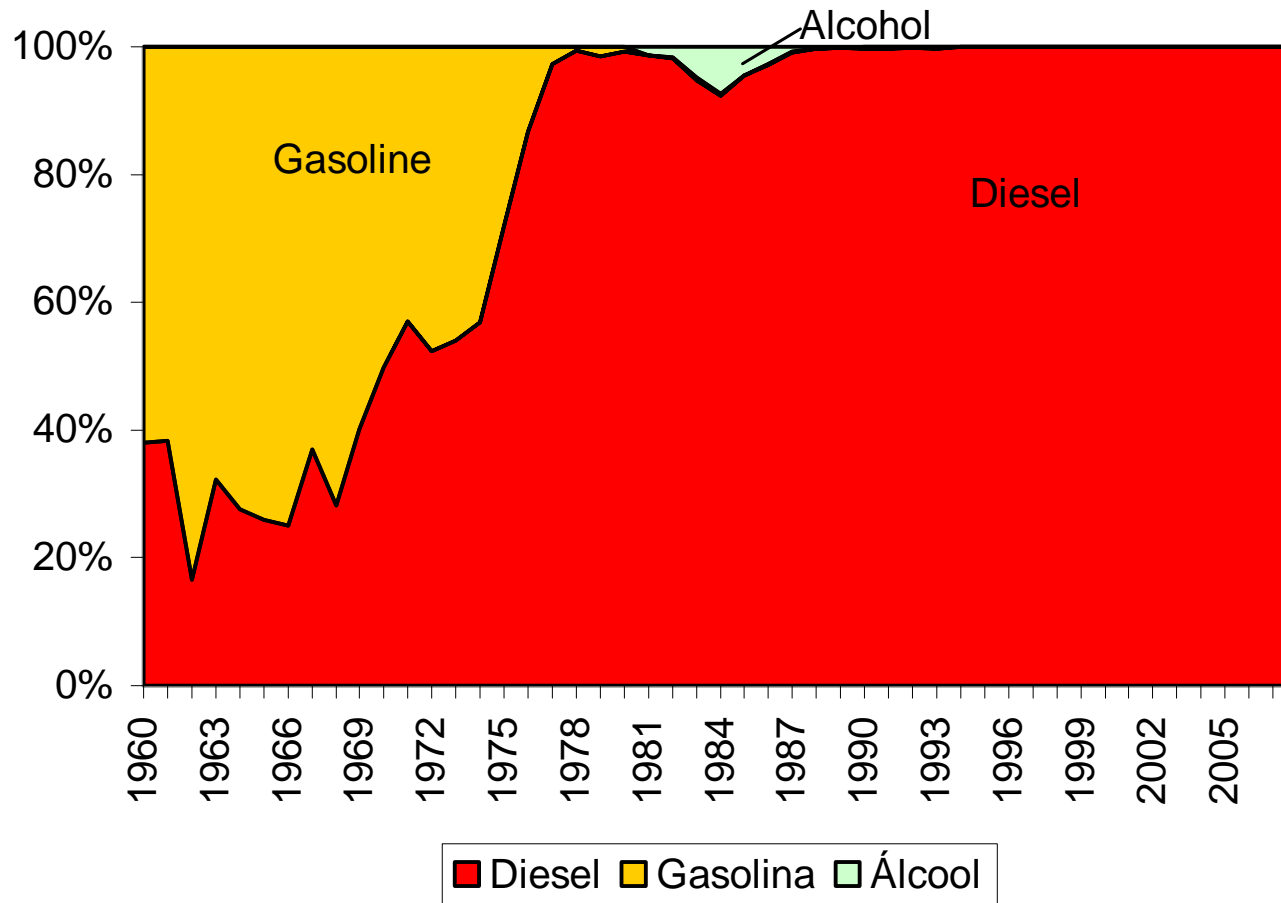


Transport Sector and GHG Emissions in Brazil

- Transport Sector and GHG Emissions
- New Cars Sales by Mode
- Energy Prices and Vehicles Market
- **New Car Sales by Fuel**
- Vehicle Fleet by Mode and Fuel
- Use of Natural Gas and Biodiesel
- GHG Emissions in Transport
- Mottos Sales and Fleet

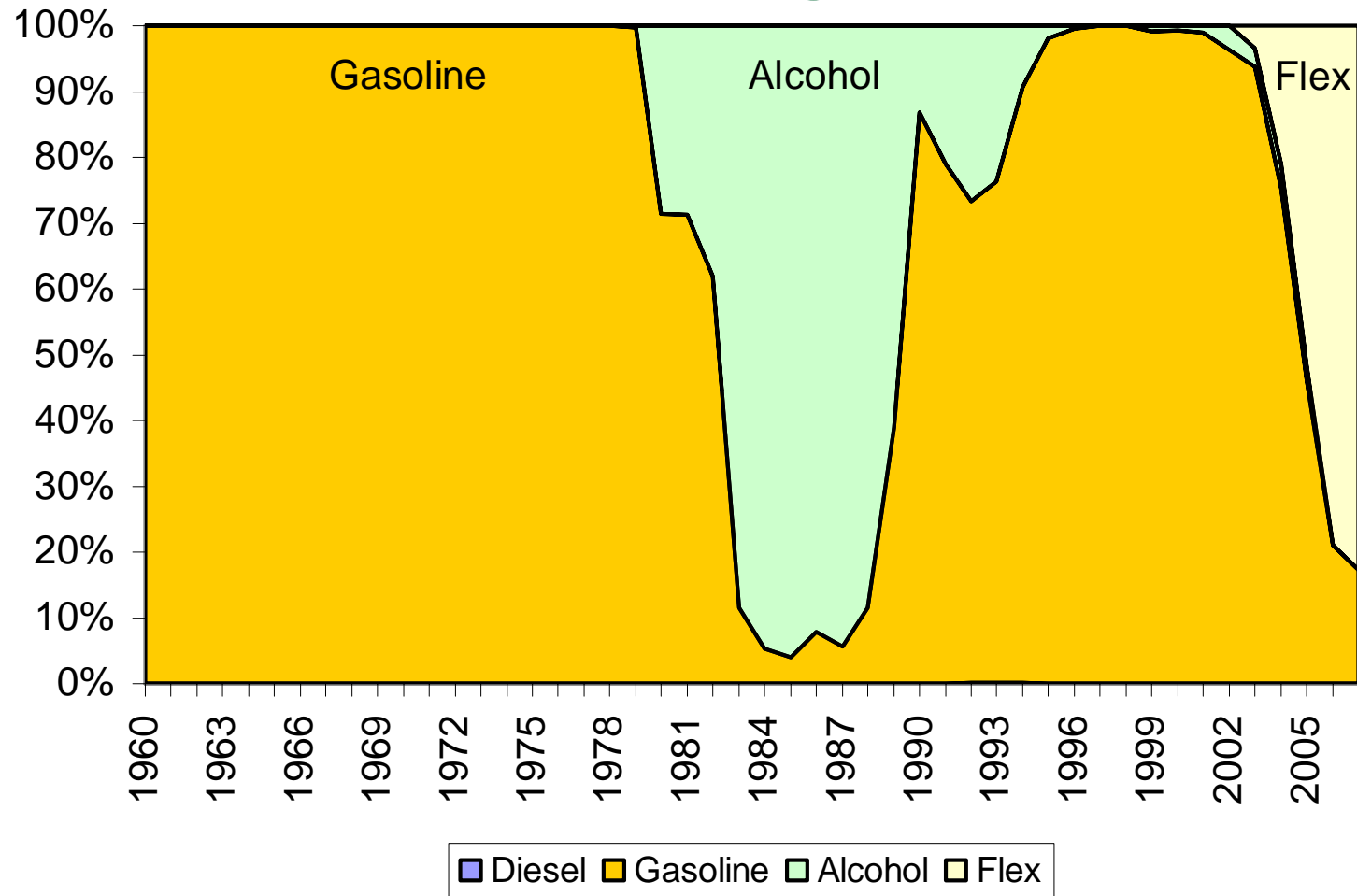
Transport Sector in Brazil :

Share of New Trucks Registration by Fuel



Transport Sector in Brazil :

Share of New Cars Registration by Fuel



Transport Sector and GHG Emissions in Brazil

- Transport Sector and GHG Emissions
- New Cars Sales by Mode
- Energy Prices and Vehicles Market
- New Car Sales by Fuel
- **Vehicle Fleet by Mode and Fuel**
- Use of Natural Gas and Biodiesel
- GHG Emissions in Transport
- Motorcycles Sales and Fleet



Transport Sector in Brazil :

Road Transport Fleet – Different Sources

Year 2006	Denatran	e&e		Anfavea	
	Thousand Vehicles	Thousand Vehicles	% Denatran	Thousand Vehicles	% Denatran
Passenger cars	27000	22974	85%	19212	71%
Light commercials	4485	3594	80%	3061	68%
Trucks	2004	1254	63%	1411	70%
Buses	344	281	82%	386	112%
Total	33833	28103	83%	24070	71%



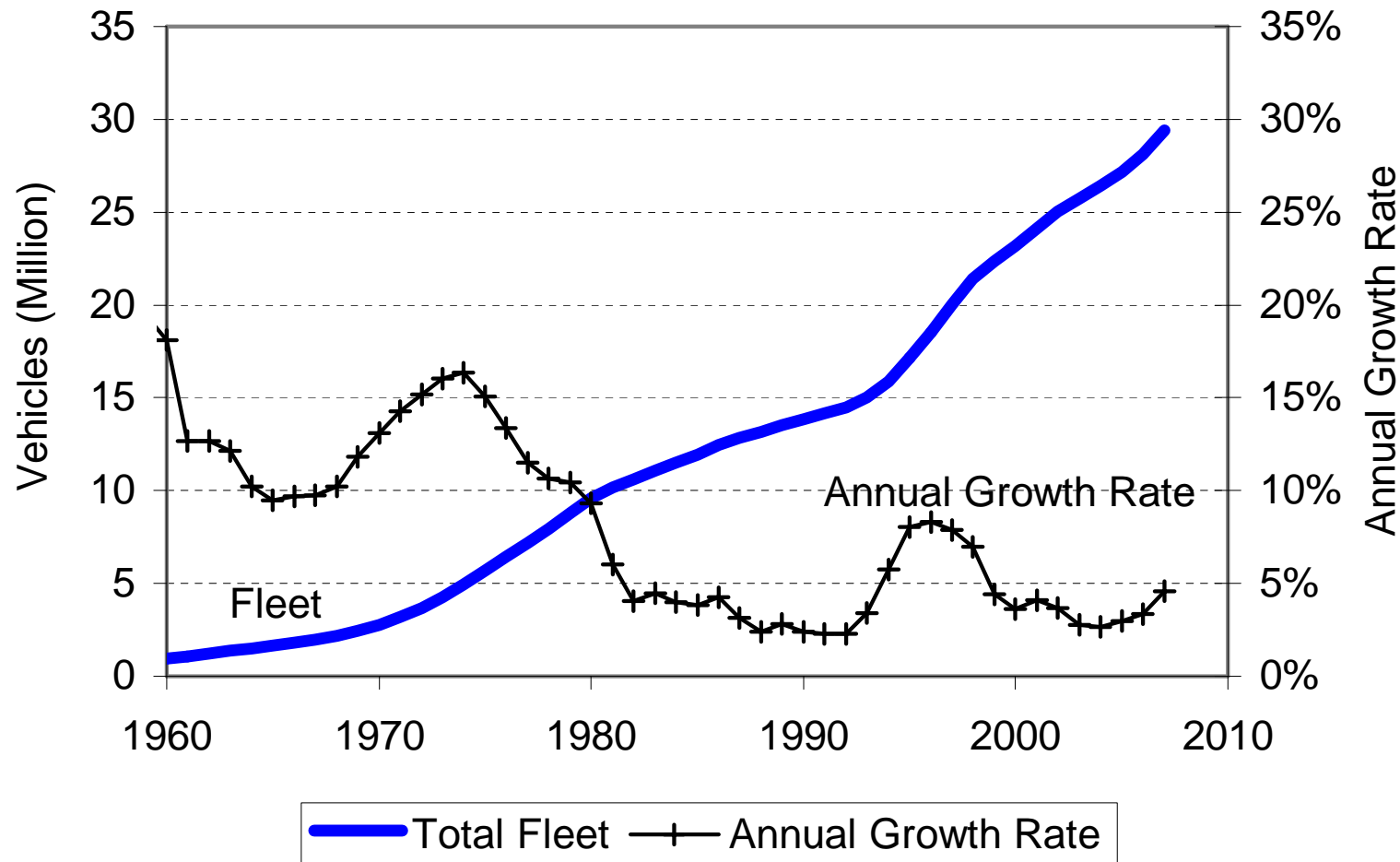
Transport Sector in Brazil :

Comments about Different Fleet Sources

- Denatran – National Road Traffic Department (Official Data) – Inter-states vehicles changes are not well computed
 - Anfavea – National Association of Automotive Industry - Fleet based on annual vehicle registration and calculated annual scrapping,
 - e&e – Same methodology but different scrapping rates
-

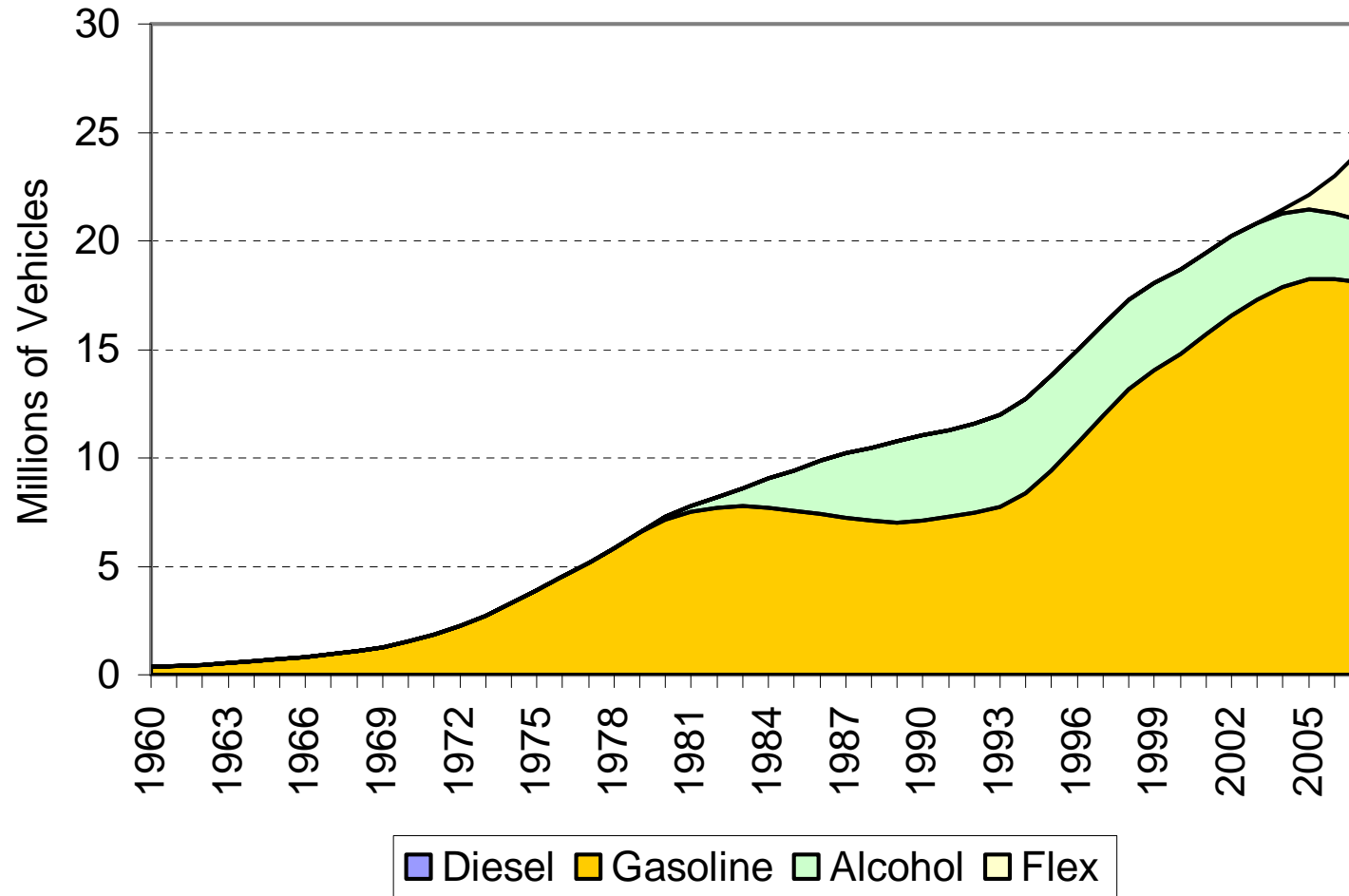


Transport Sector in Brazil : Road Transport Fleet

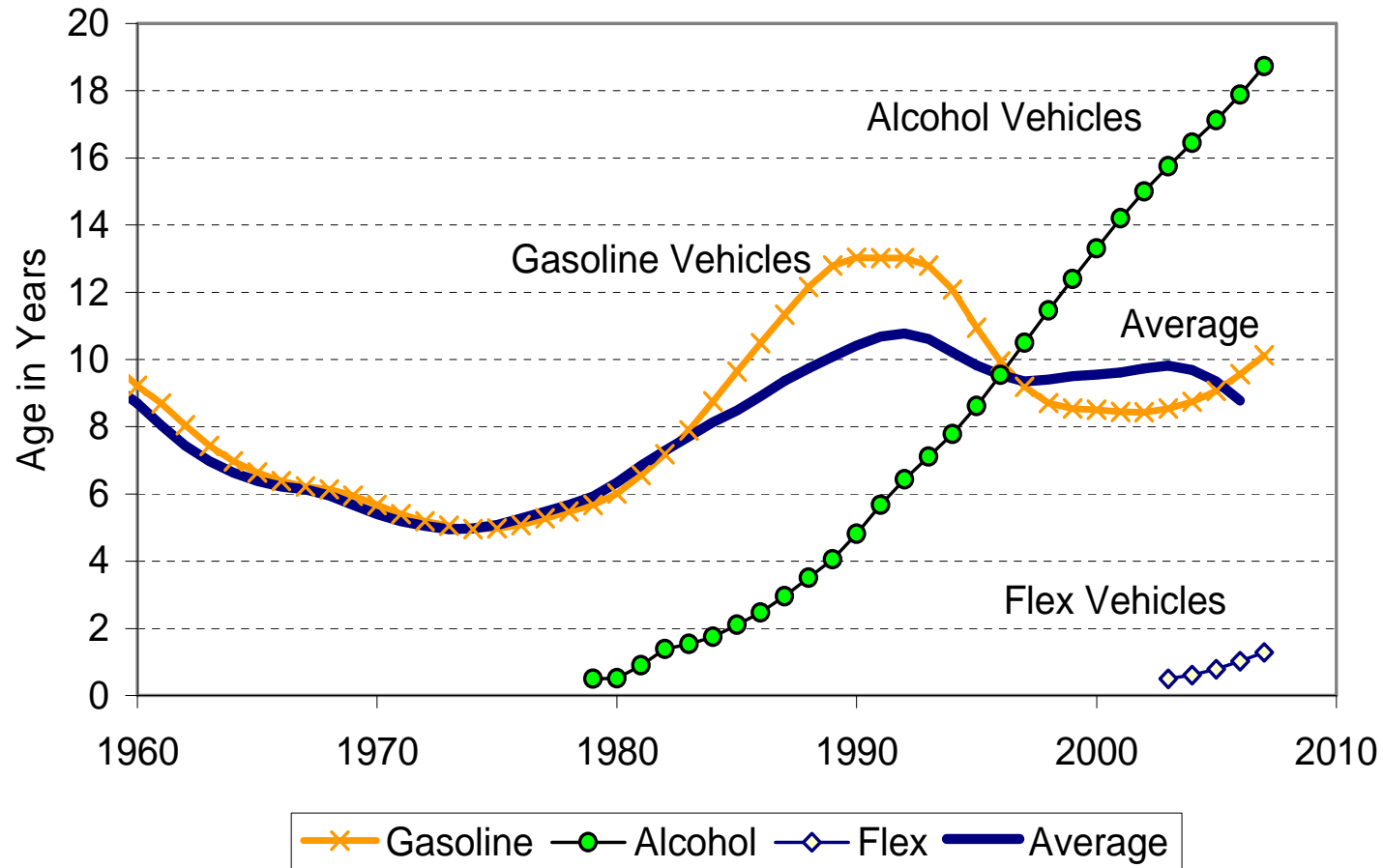


Transport Sector in Brazil

Car Fleet Evolution by Fuel



Transport Sector in Brazil : Average Age of Cars Fleet



Transport Sector and GHG Emissions in Brazil

- Transport Sector and GHG Emissions
- New Cars Sales by Mode
- Energy Prices and Vehicles Market
- New Car Sales by Fuel
- Vehicle Fleet by Mode and Fuel
- **Use of Natural Gas and Biodiesel**
- GHG Emissions in Transport
- Motorcycles Sales and Fleet



Transport Sector in Brazil :

Use of Compressed Natural Gas in Vehicles

- All the present fleet is of converted cars (dual fuel) using gasoline/NG or Alcohol/NG
- Estimated fleet 1.4 million car (light vehicles)
- Average consumption
 - 220 million m³/month
 - 5,1 Nm³/day
- Brazilian NGV fleet of Brazilian almost equal to Argentinean in 2007
- Prices: Gasoline 0.66 US\$/l, Alcohol 0.99 US\$/l
NGV 0,66/m³
40% Gasoline, 39% Alcohol (Energy Relative Price)
- Data Source: NGV Group September 2007



Transport Sector in Brazil : Biodiesel

- National Target: 5% renewable fuel mixed with diesel for next years (present target 2%)
 - Sterification of vegetable oil
 - H-bio produced in hydro-treating units in existing oil refineries
- Brazilian Biodiesel Production
(in million of boe / year)
 - 2005 0.005
 - 2006 0.4
 - 2007 2.5 (1.3% of diesel consumption)



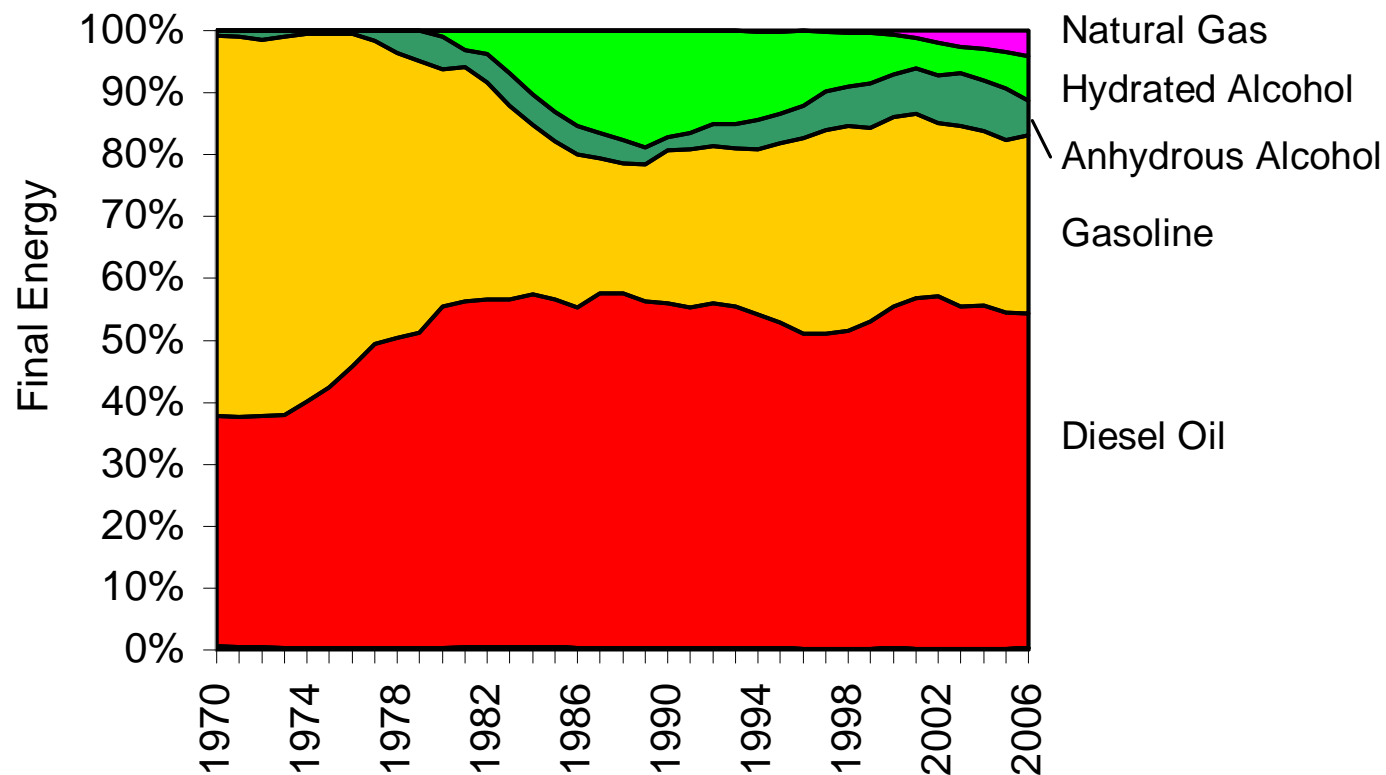
Transport Sector and GHG Emissions in Brazil

- Transport Sector and GHG Emissions
- New Cars Sales by Mode
- Energy Prices and Vehicles Market
- New Car Sales by Fuel
- Vehicle Fleet by Mode and Fuel
- Use of Natural Gas and Biodiesel
- **GHG Emissions in Transport**
- Motorcycles Sales and Fleet



Transport Sector in Brazil :

Road Transportation Fuel Consumption



■ Diesel Oil

■ Gasoline

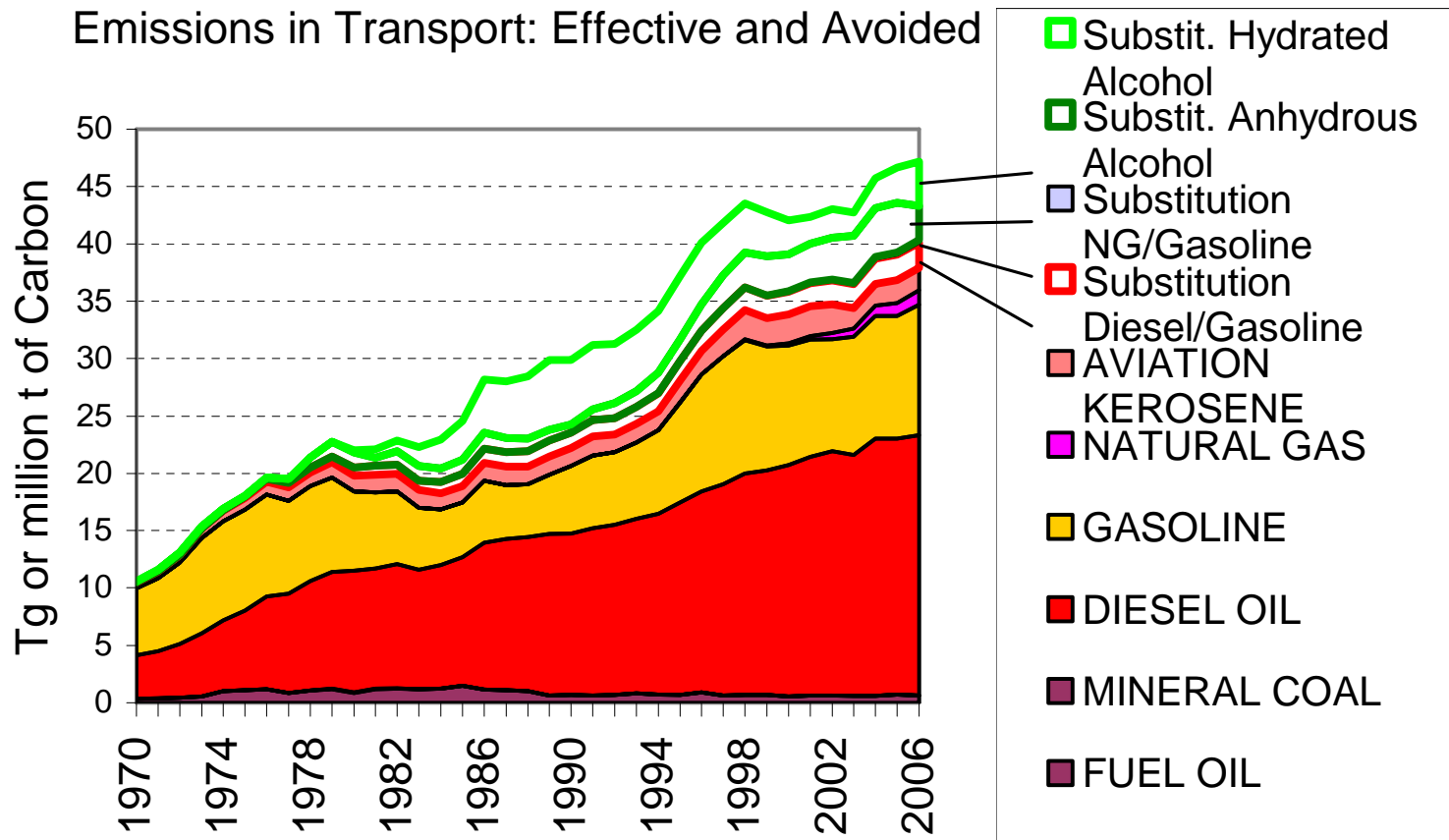
■ Anhydrous Alcohol

■ Hydrated Alcohol

■ Natural Gas



Transport Sector in Brazil : Carbon Emissions Avoided

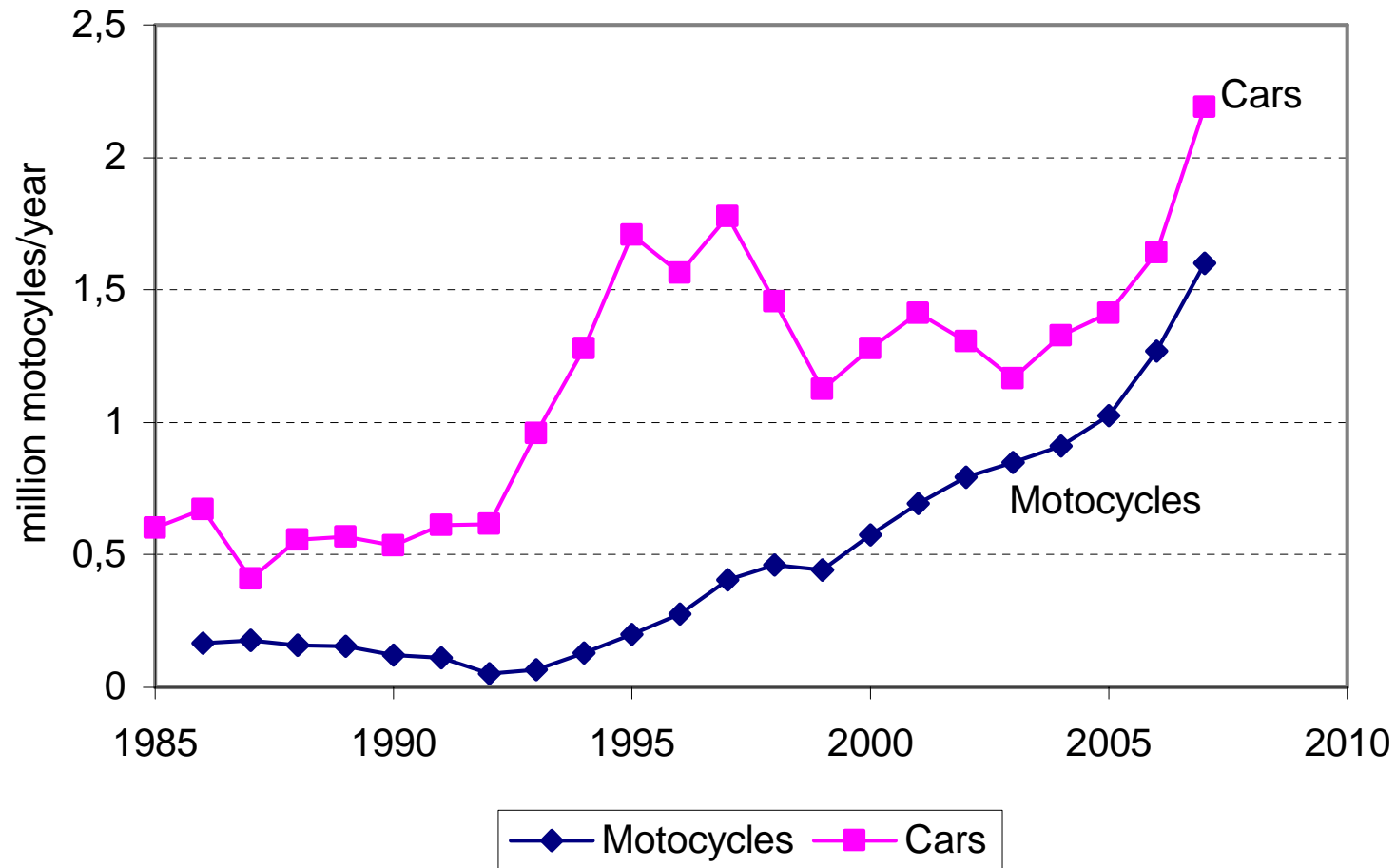


Transport Sector and GHG Emissions in Brazil

- Transport Sector and GHG Emissions
 - New Cars Sales by Mode
 - Energy Prices and Vehicles Market
 - New Car Sales by Fuel
 - Vehicle Fleet by Mode and Fuel
 - Use of Natural Gas and Biodiesel
 - GHG Emissions in Transport
 - **Motorcycles Sales and Fleet**
-



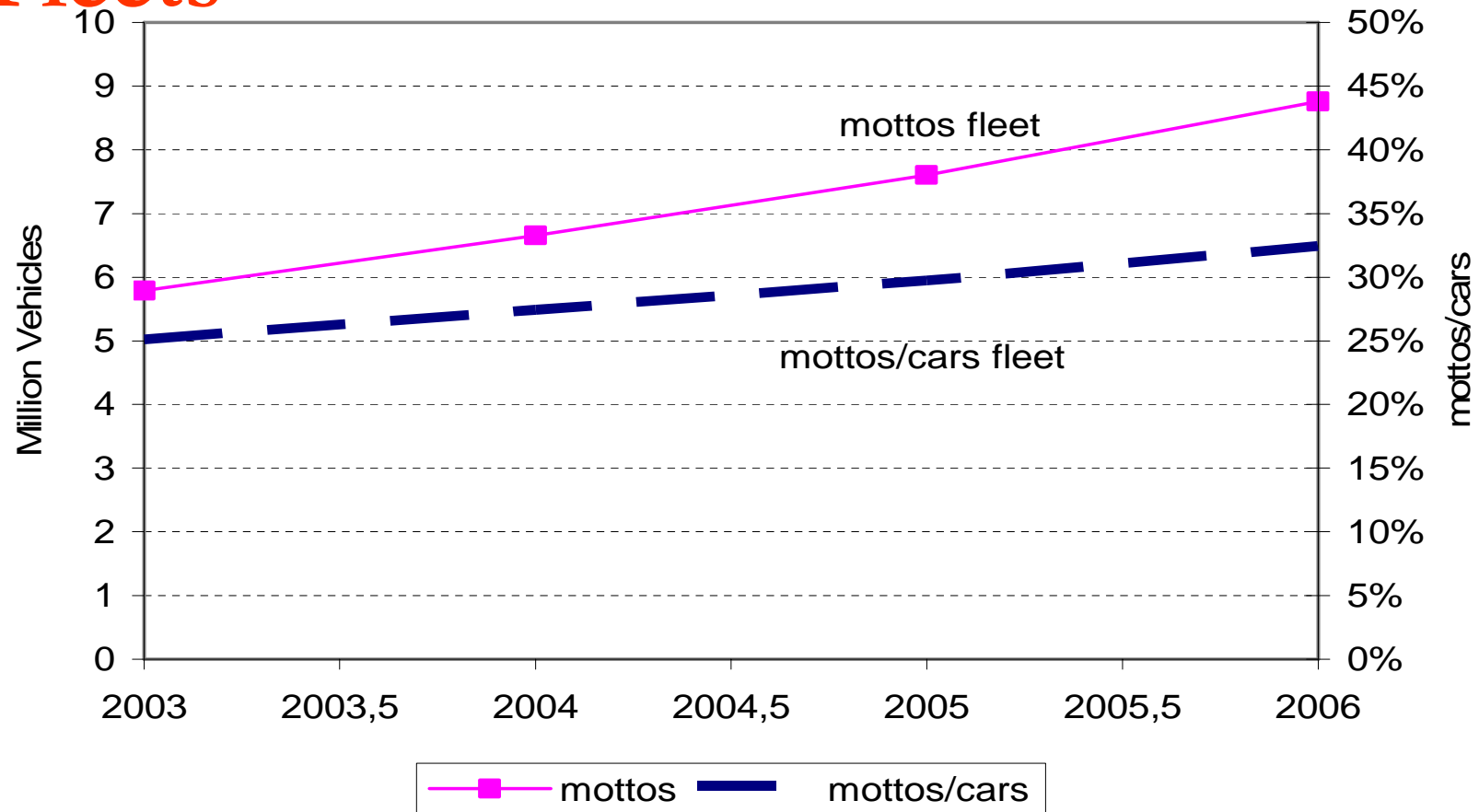
Transport Sector in Brazil : Motorcycles and Cars Sales



Transport Sector in Brazil :

Motorcycles and Motorcycles/Cars

Fleets



Transport Sector in Brasil

Motorcycles and Traffic

- In Brazil motorcycles are still considered as a marginal vehicle
- The motorcycles fleet is now 1/3 of cars fleet
- About 380 thousand registered accidents with victims (36 thousand deaths) in 2005
- Recently the Sao Paulo's administration established some special corridor for motorcycles



Transport Sector and GHG Emissions in Brazil

- END
- <http://ecen.com>

Transport Sector in Brazil :

Transport Fuel Consumption

