



ASF INAG and The Electronic Motorway Toll System in Austria

**ASF INAG Maut Service GmbH
Werner Fritz**

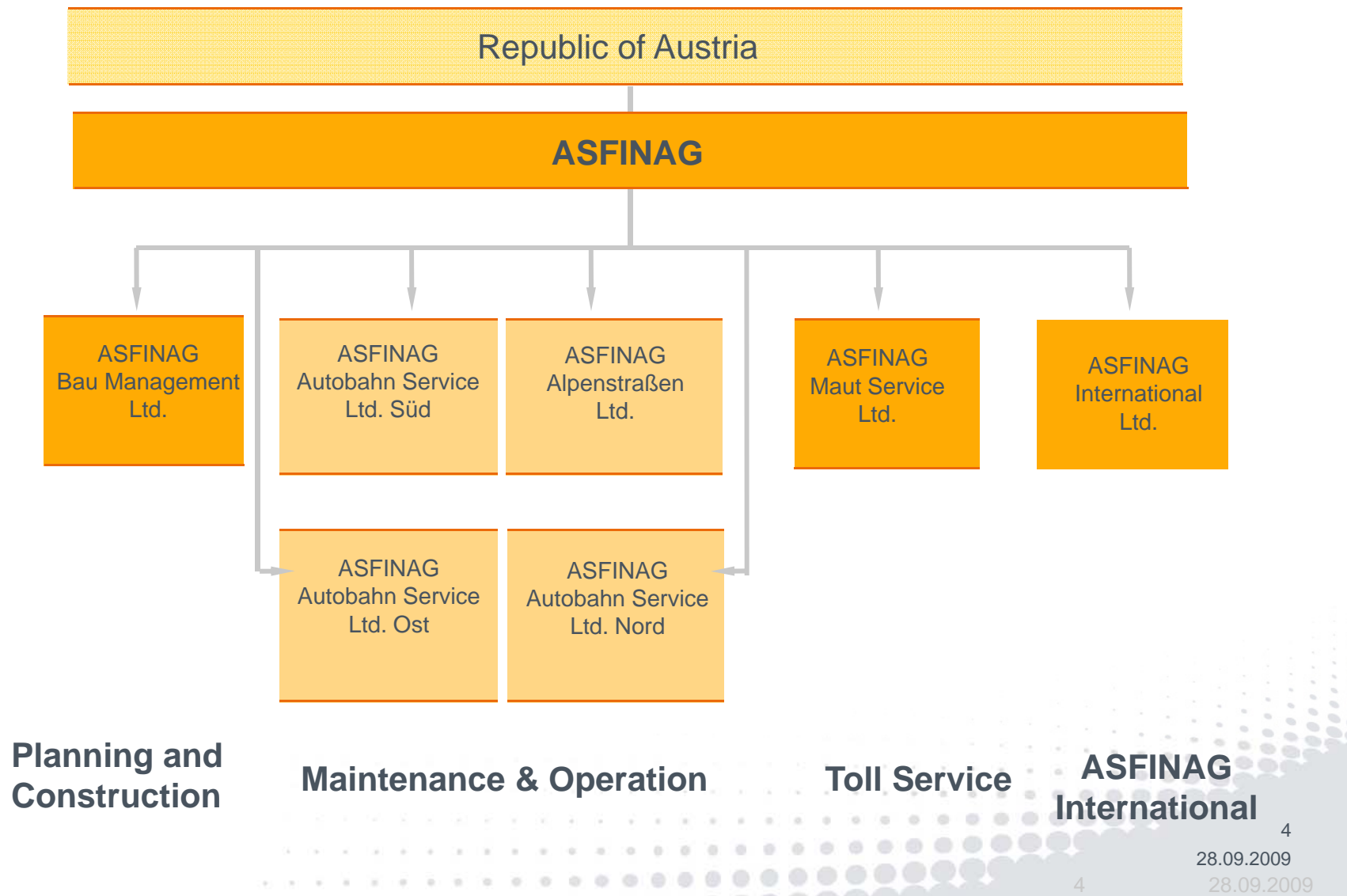
ASFINAG

ASFINAG Group's main tasks are

- **Management of Motorways
Planning & Construction**
- **Maintenance & Operation**
- **Tolling**



ASFINAG Corporate Structure

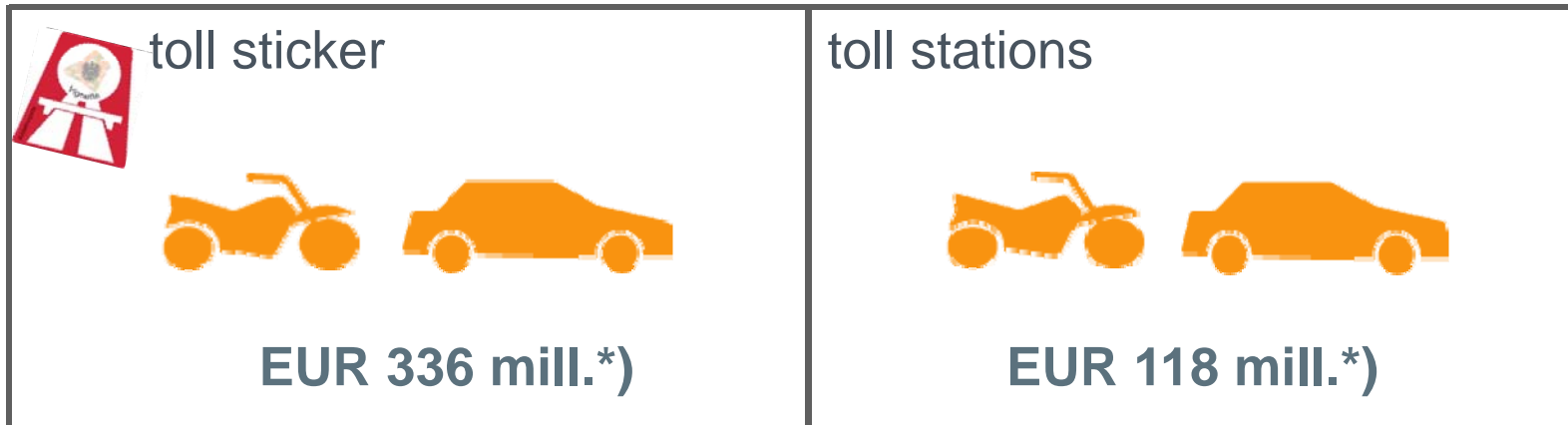




Toll Systems in Austria

Survey and toll revenues

vehicles < 3,5t GVW**



vehicles > 3,5t GVW**



**) gross vehicle weight

*) rounded



The Electronic Motorway Toll System in Austria

Road-side infrastructure – toll gantry

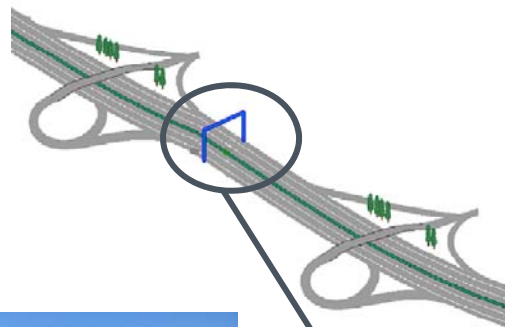


ASFINAG is responsible for a network of more than 2,100 km motorways.

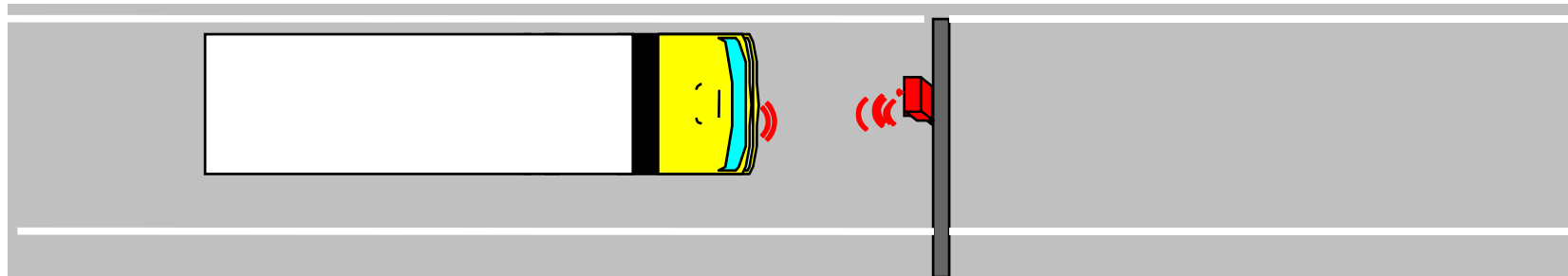
The road network is divided into individual toll sections (between junctions).

Toll is collected separately for each section.

In each section there is a toll gantry with antennas.



Communication: toll gantry and GO-Box

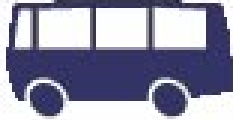



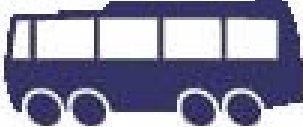




The toll collection technology is based on a microwave system:

The Austrian On-Board Unit „GO-Box“ communicates with microwave antennas on the toll gantries and toll is collected automatically.



Tariffs

Categories	  Cat. 2	  Cat. 3	   Cat. 4
Axis	2	3	4+
Tariffs (excl. VAT)	€ 0.158/km	€ 0.2212/km	€ 0.3318/km

GO-Box (On-Board Unit)

- €5,00 processing fee (once per licence plate number)
- **3 categories** (number of axles) can be set
- Pre-Pay and Post-Pay procedure
- Easy self-installation



Enforcement

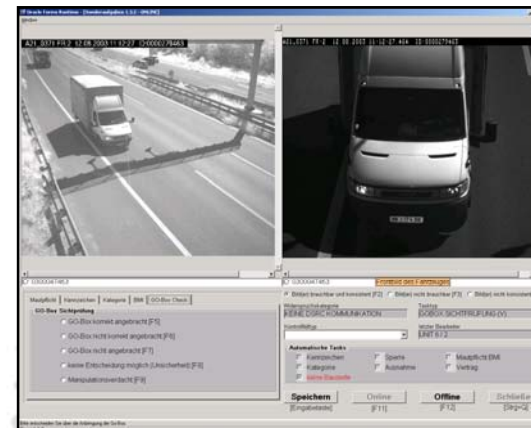
The toll-enforcement happens on the one hand by **toll-controllers...**



.. and on the other hand by **stationary toll-enforcement-gantries and portable enforcement equipments.**



Manual follow-up:



Interoperability

Bilateral Interoperability

Switzerland

Since 2004 the Swiss OBU (Tripon) is in operation in Austria
(solution with two contracts)

Germany

Project to use the German OBU in Austria is in evaluation
(solution with two contracts)

Scandinavia - EasyGo

Feasibility study in progress

Upcoming introduction of the toll tariff system based on emission categories

- Ecologisation of toll on 1st January 2010
- All vehicles over 3,5 t
- No need of a new GO-Box – declaration of the emission category can be done within a few minutes at every GO point of sale
- For any declared emission categories that lead to a lower-priced toll tariff (EURO IV or better), it is necessary to provide proper evidence.
- The emission category will be included as an additional factor in the calculation of the payable toll (e. g. covered km, number of axles, time...)

Tariff groups	Emission category	expected difference to the actual toll tariff
A	EEV, VI	- 10%
B	IV, V	- 4 %
C	0, I, II, III	+ 10 %



Contact:

ASFINAG MAUT SERVICE GMBH

A-5020 SALZBURG, ALPENSTRASSE 99, POBOX 74

www.asfinag.at, www.go-maut.at

ASFINAG Service Centre

0800 400 12 400

info@asfinag.at

Werner FRITZ

Werner.fritz@asfinag.at



RELIABILITY ALL THE WAY.